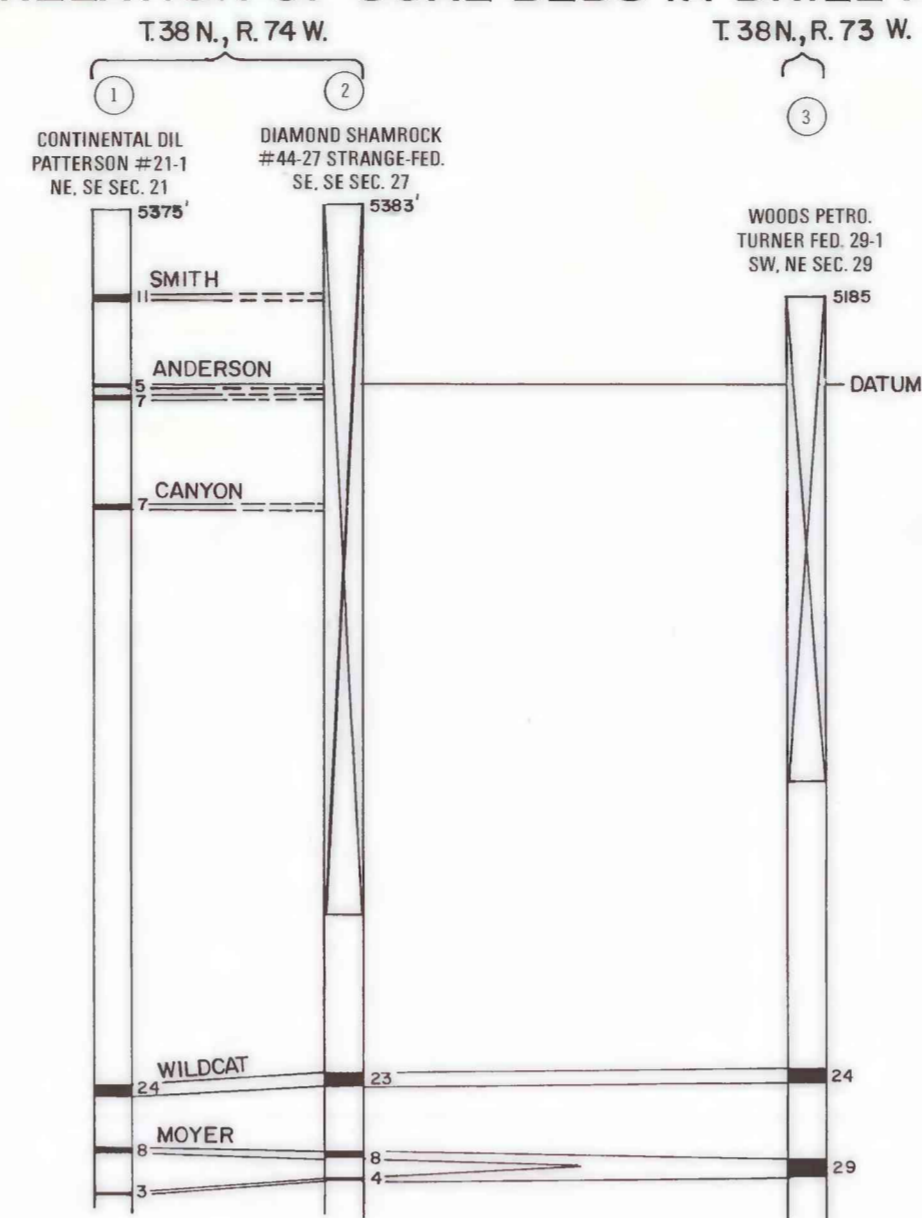
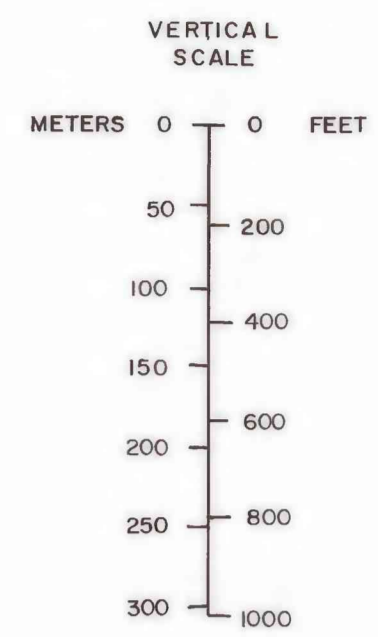


CORRELATION OF COAL BEDS IN DRILL HOLES



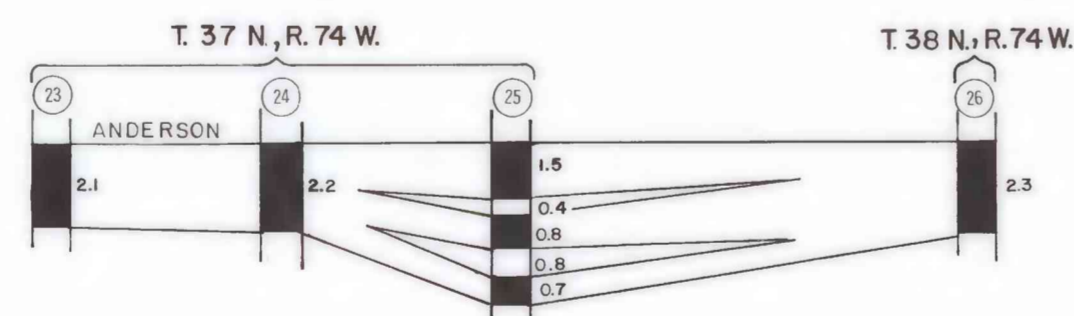
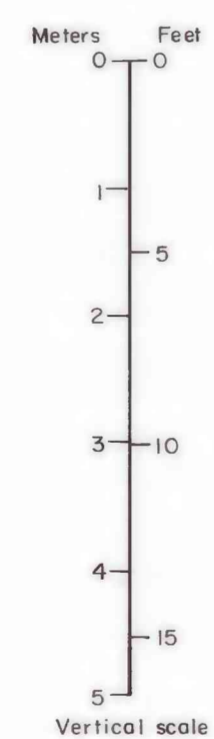
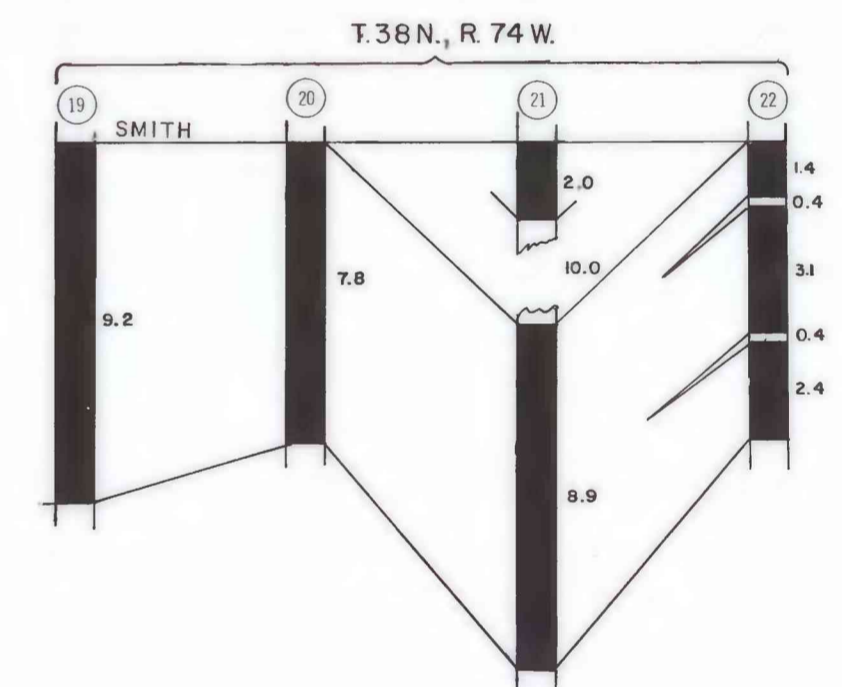
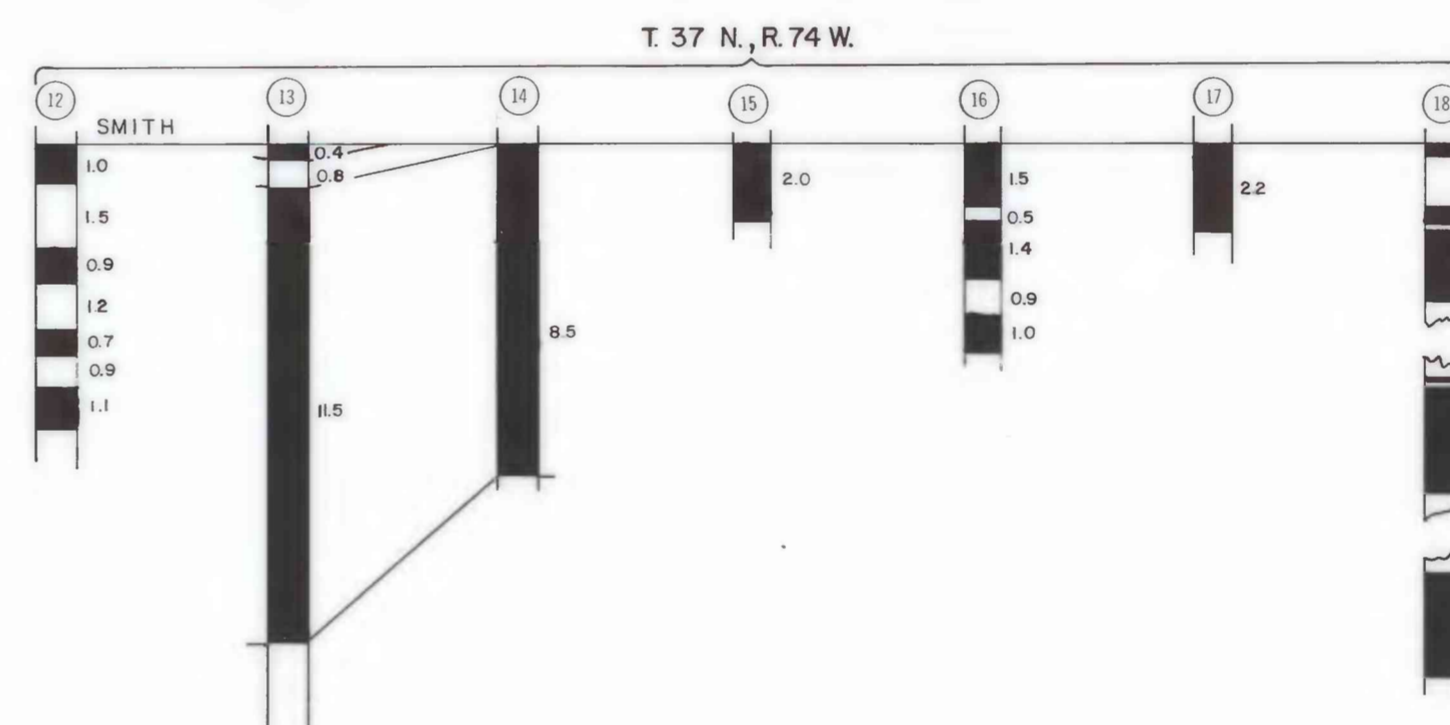
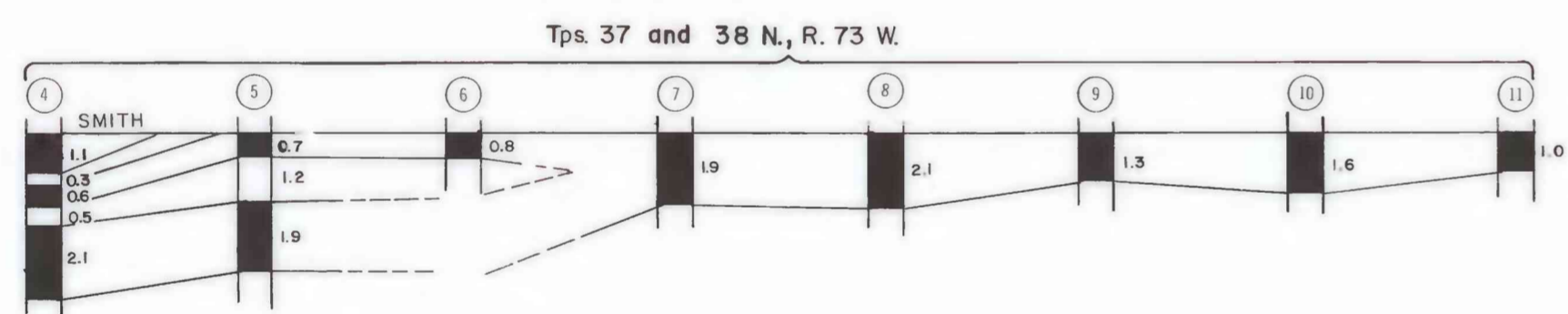
- #### EXPLANATION
- ① Index number
 - Woods Petro. Turner Fed. 25-1 } Company and well name
 - SW, NE SEC. 29 } Well location
 - 4000 } Elevation of drill hole at surface
 - No record
 - Rock interval
 - Coal bed, showing thickness in feet
 - Coal Bed Names
 - Smith
 - Anderson
 - Canyon
 - Wildcat
 - Moyer



Dashed lines, indicating the projection of coal beds through drill sites where no record (NR) intervals exist, are for correlation purposes only and are not intended to portray either the structural elevation or the thickness of these coal beds.

REFERENCE FOR MEASURED SECTIONS
 Wegemann, C.H., Howell, R.H. and Dobbin, C.E.,
 1928, The Pumpkin Buttes Coal Field, Wyoming:
 U.S. Geological Survey Bulletin 806, Plate 4.

MEASURED SECTIONS OF COAL BEDS



COAL RESOURCE OCCURRENCE MAP OF THE NW¼ HIGHLAND FLATS 15' QUADRANGLE, CONVERSE COUNTY, WYOMING

BY
IntraSearch
 1979

This report has not been edited for conformity with U.S. Geological Survey editorial standards or stratigraphic nomenclature.