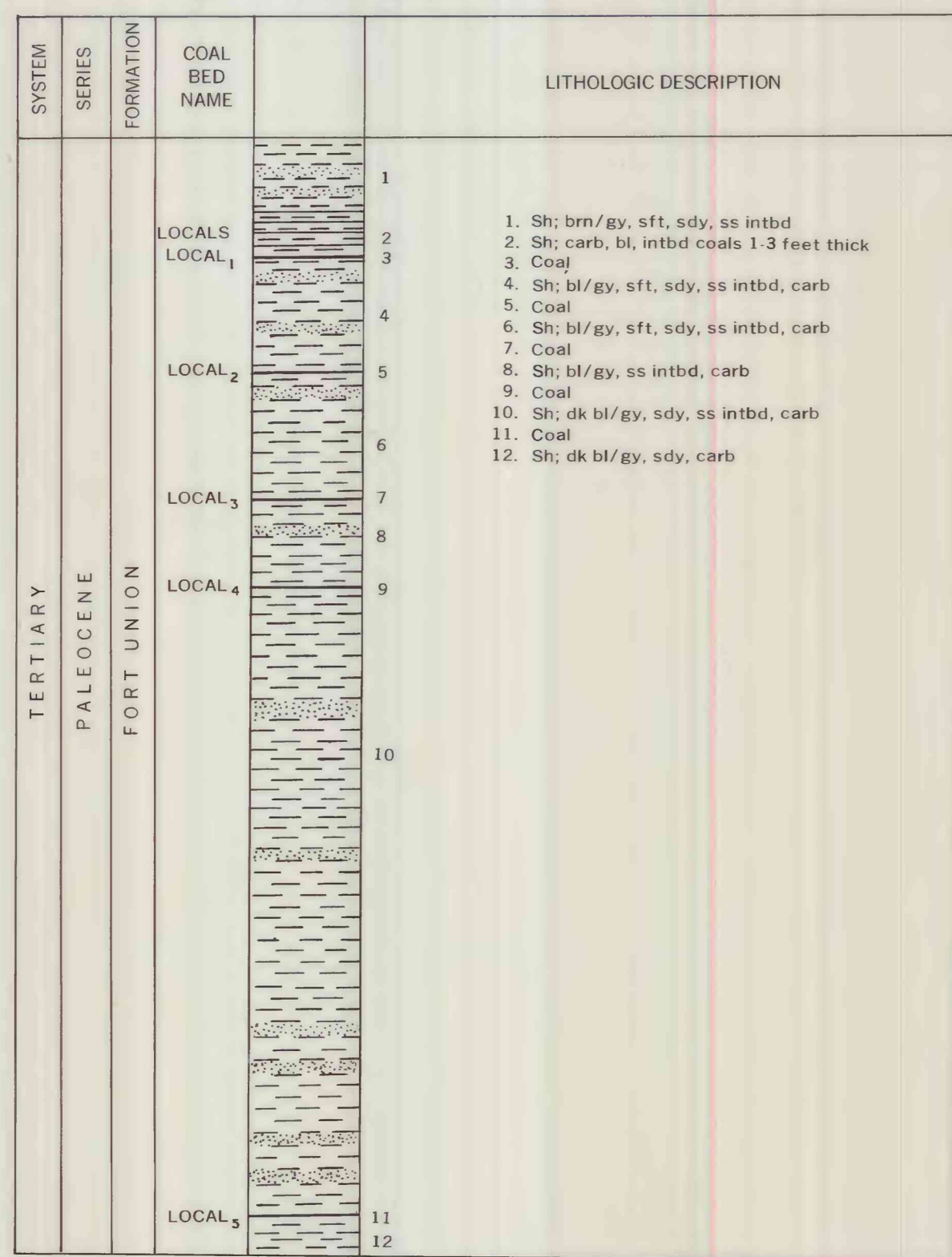
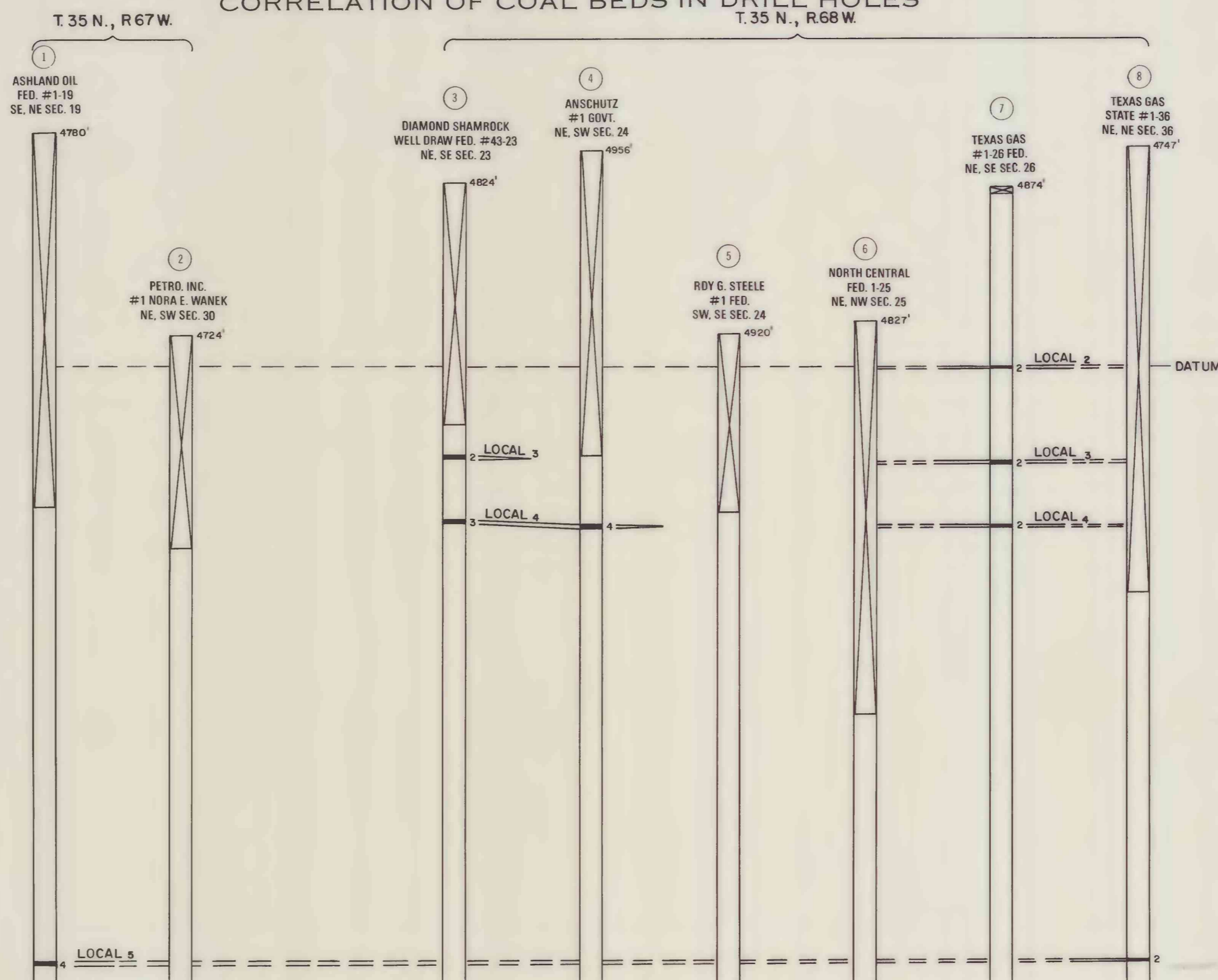


COMPOSITE COLUMNAR SECTION

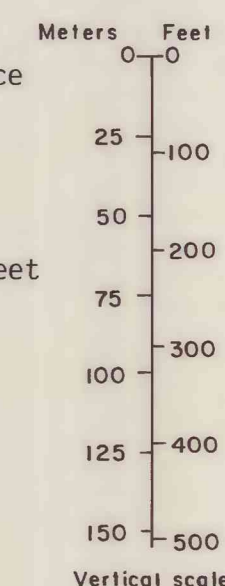


CORRELATION OF COAL BEDS IN DRILL HOLES



EXPLANATION

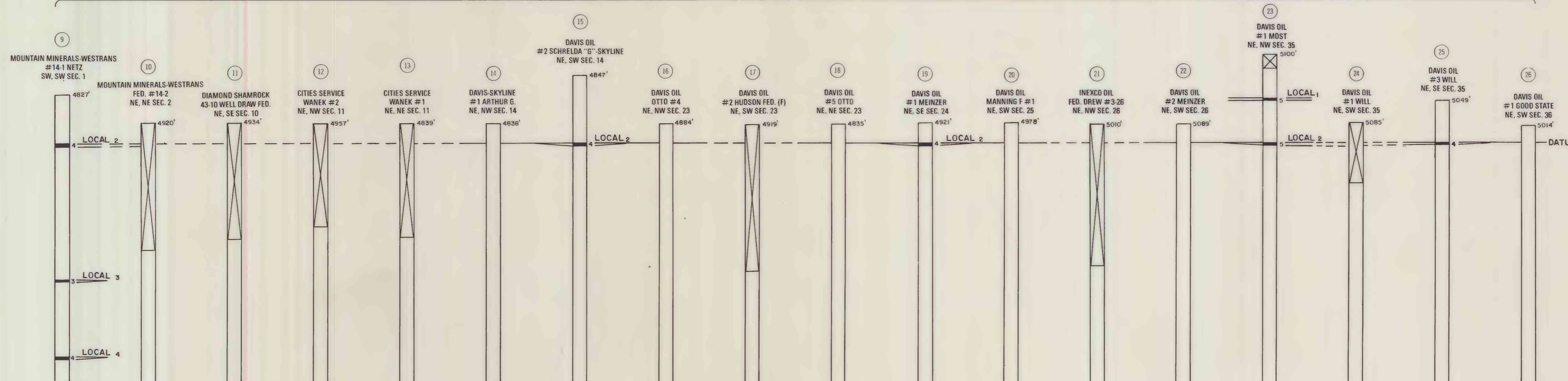
- Index number
- Company and well name
- Elevation of Drill hole at surface
- No record
- Rock interval
- Coal bed, showing thickness in feet
- Coal bed names
Local₁
Local₂
Local₃
Local₄
Local₅



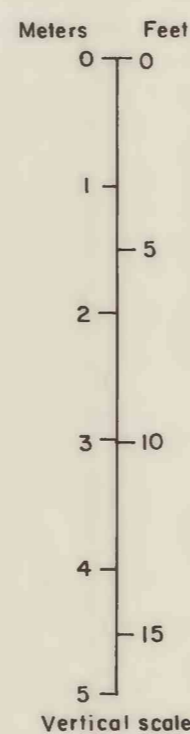
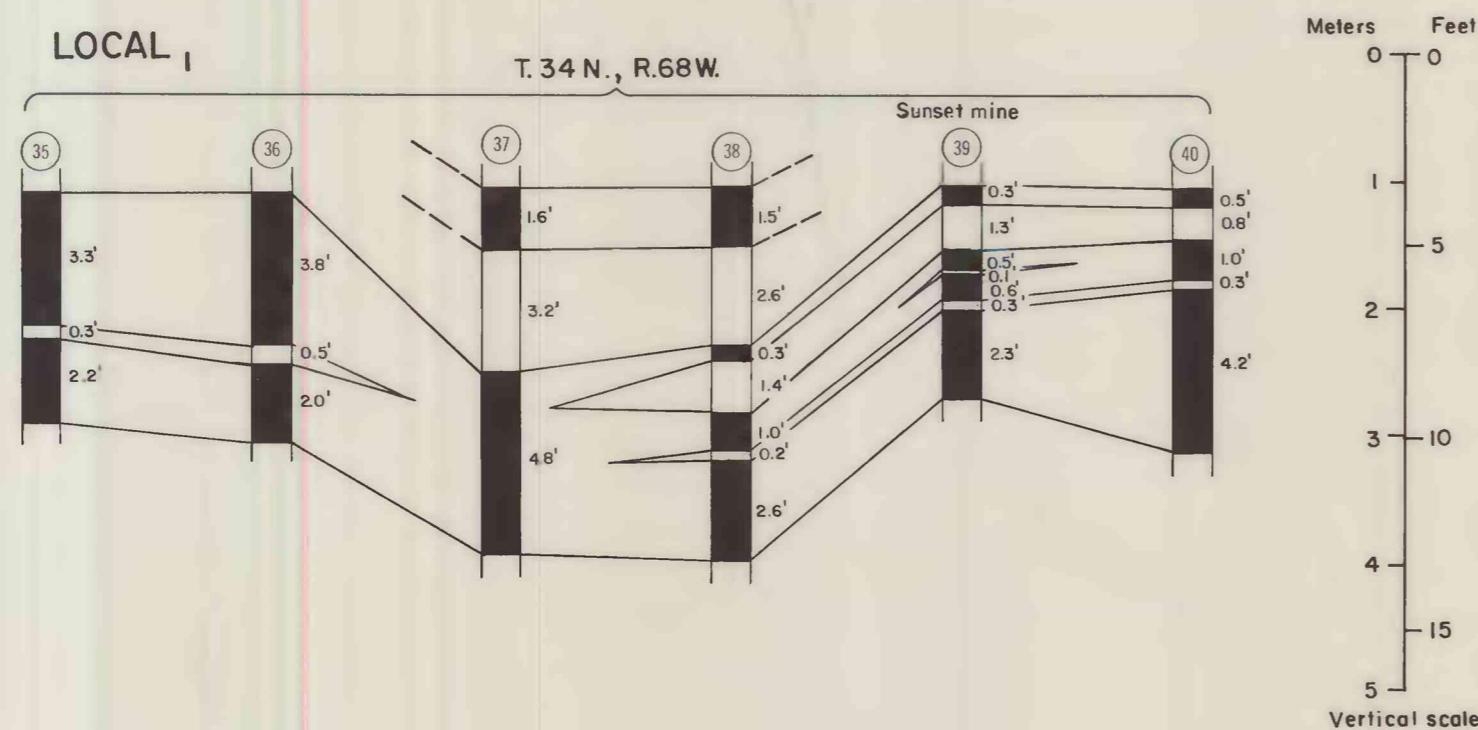
Dashed lines, indicating the projection of coal beds through drill sites where no record (NR) intervals exist, are for correlation purposes only and are not intended to portray either the structural elevation or the thickness of these coal beds.

REFERENCE FOR MEASURED SECTIONS
Winchester, D.E., 1910, Lost Spring coal field, Wyoming: U.S. Geological Survey Bulletin 471, Plate XLVI.

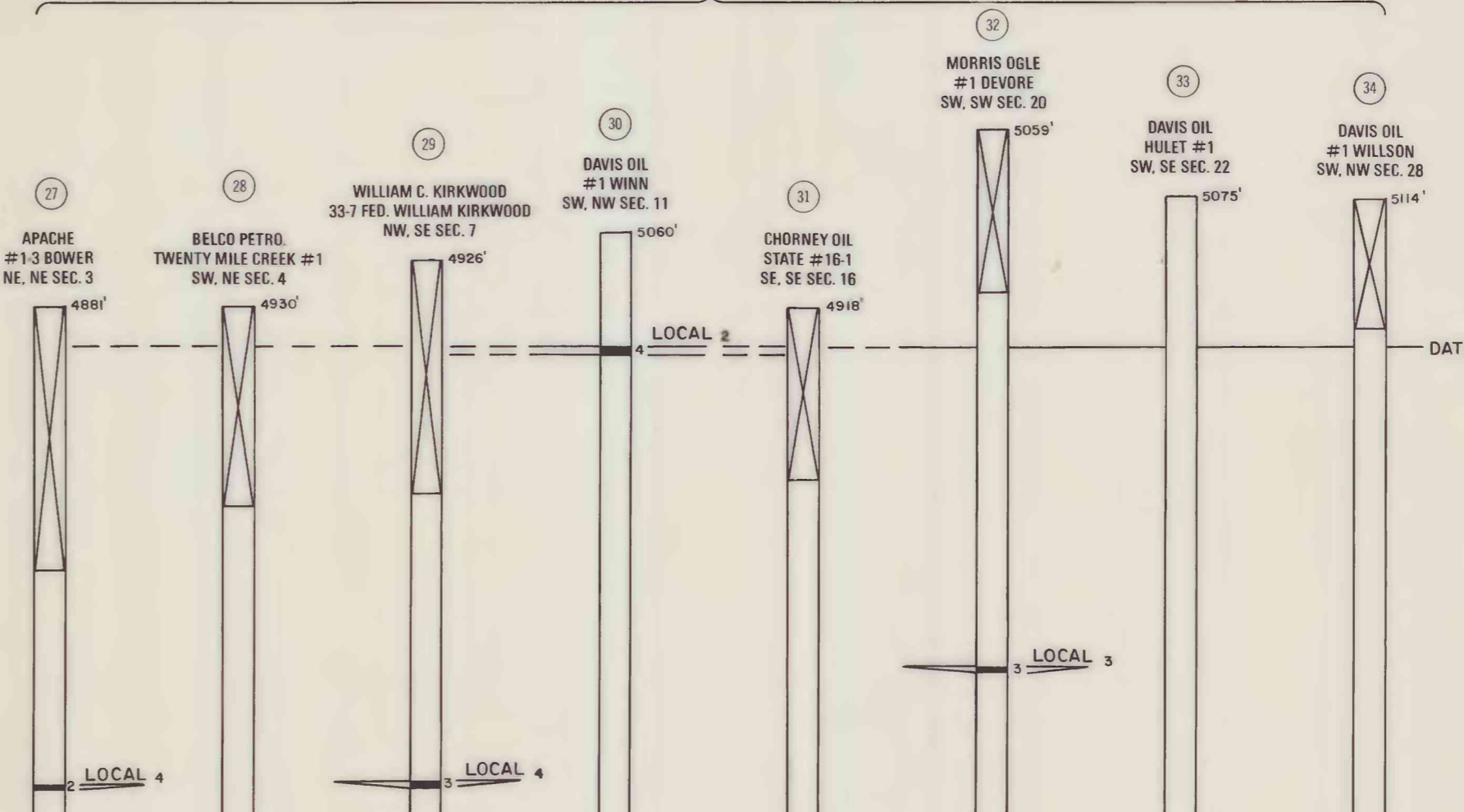
T.34 N., R.68 W.



CORRELATION OF COAL BEDS IN MEASURED SECTIONS



T.34 N., R.67 W.



COAL RESOURCE OCCURRENCE MAP OF THE LOST SPRINGS NW QUADRANGLE, CONVERSE AND NIOBRARA COUNTIES, WYOMING

BY
IntraSearch
1979

This report has not been edited for conformity with U.S. Geological Survey editorial standards or stratigraphic nomenclature.