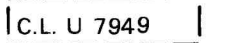


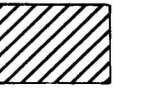
KRCRA BOUNDARY—Label within boundary.



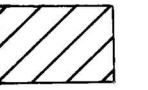
NON-FEDERAL COAL LAND—Land for which the Federal Government does not own the coal rights, and for which the coal-development potential is not rated.



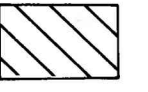
FEDERAL COAL LEASE BOUNDARY—Lease number within boundary.



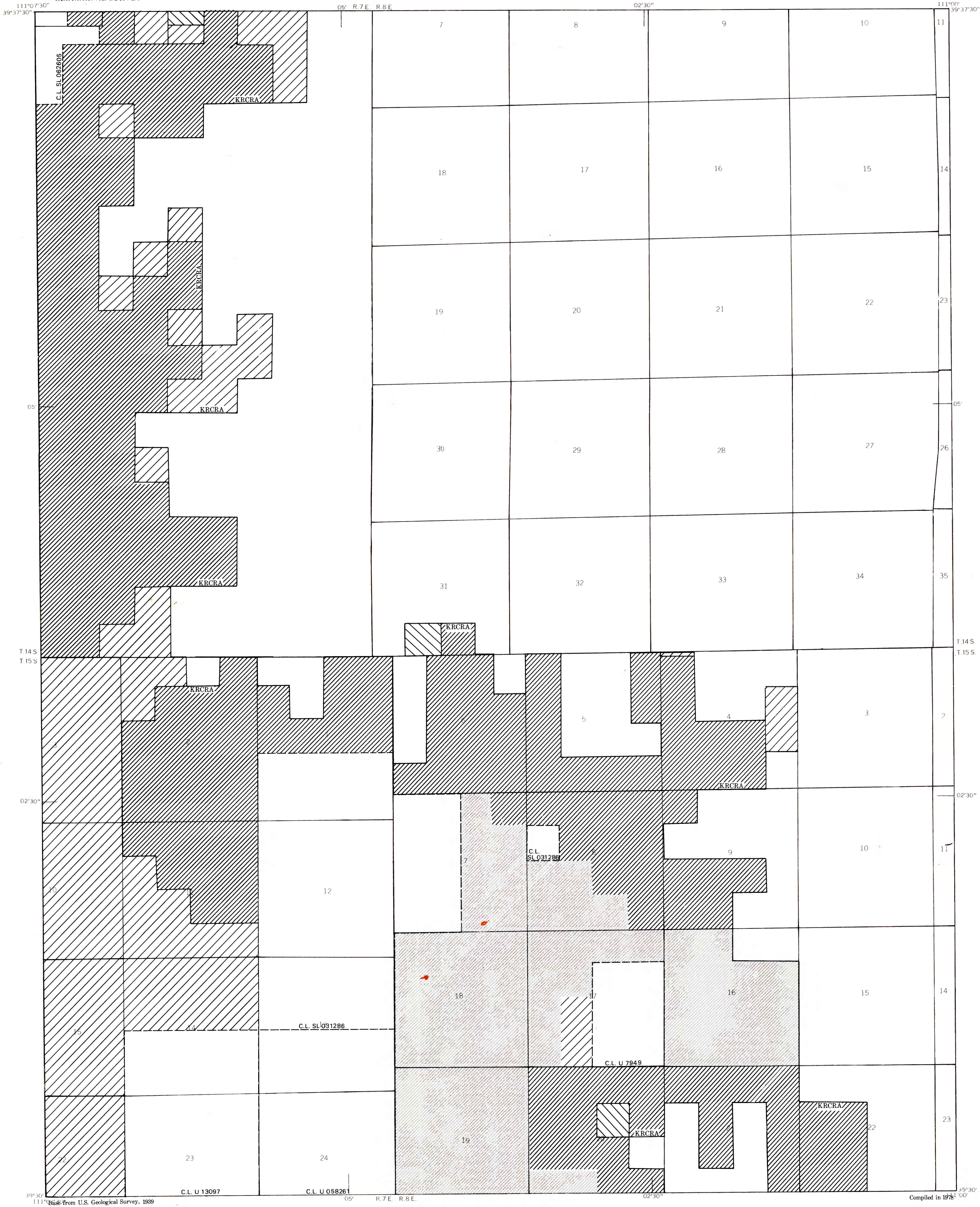
AREA OF HIGH-DEVELOPMENT POTENTIAL—Area contains coal in beds 5 feet (1.5m) or more thick between the coal outcrop and a depth of 1,000 feet (304.8 m).



AREA OF UNKNOWN COAL-DEVELOPMENT POTENTIAL—Area contains no known coal in beds 5 feet (1.5m) or more thick, but coal-bearing units are present in area at depths of less than 3,000 feet (914.4 m).



AREA OF NO COAL-DEVELOPMENT POTENTIAL—No coal beds are known to occur in area; or coal beds are present in area at depths greater than 3,000 feet (914.4 m).



This report has not been edited for conformity with Geological Survey editorial standards or stratigraphic nomenclature.

COAL DEVELOPMENT POTENTIAL MAP OF THE SOUTHEAST QUARTER OF THE SCOFIELD 15 - MINUTE QUADRANGLE, CARBON AND UTAH COUNTIES, UTAH BY AAA ENGINEERING AND DRAFTING, INC. 1979