

UNITED STATES  
DEPARTMENT OF THE INTERIOR  
GEOLOGICAL SURVEY

STATE OF UTAH  
UTAH GEOLOGICAL AND MINERAL SURVEY

PINE CANYON QUADRANGLE  
UTAH-CARBON CO.  
7.5 MINUTE SERIES (TOPOGRAPHIC)

3863 1 SE  
(MINNIE MAUD CREEK EAST)

EXPLANATION

7400

STRUCTURE CONTOURS—Drawn on top of coal bed, in feet. Solid where vertical accuracy within 40 feet; long dashed where vertical accuracy possibly not within 40 feet; short dashed where projected above land surface. Contour interval is 80 feet (24.4 m). Datum is mean sea level.

6698

DRILL HOLE—Showing altitude of top of coal bed, in feet. Drill holes which did not intersect top of coal bed or from which bed altitude could not be determined, are not shown.

7807

POINT OF MEASUREMENT—Showing altitude of top of coal bed, in feet.

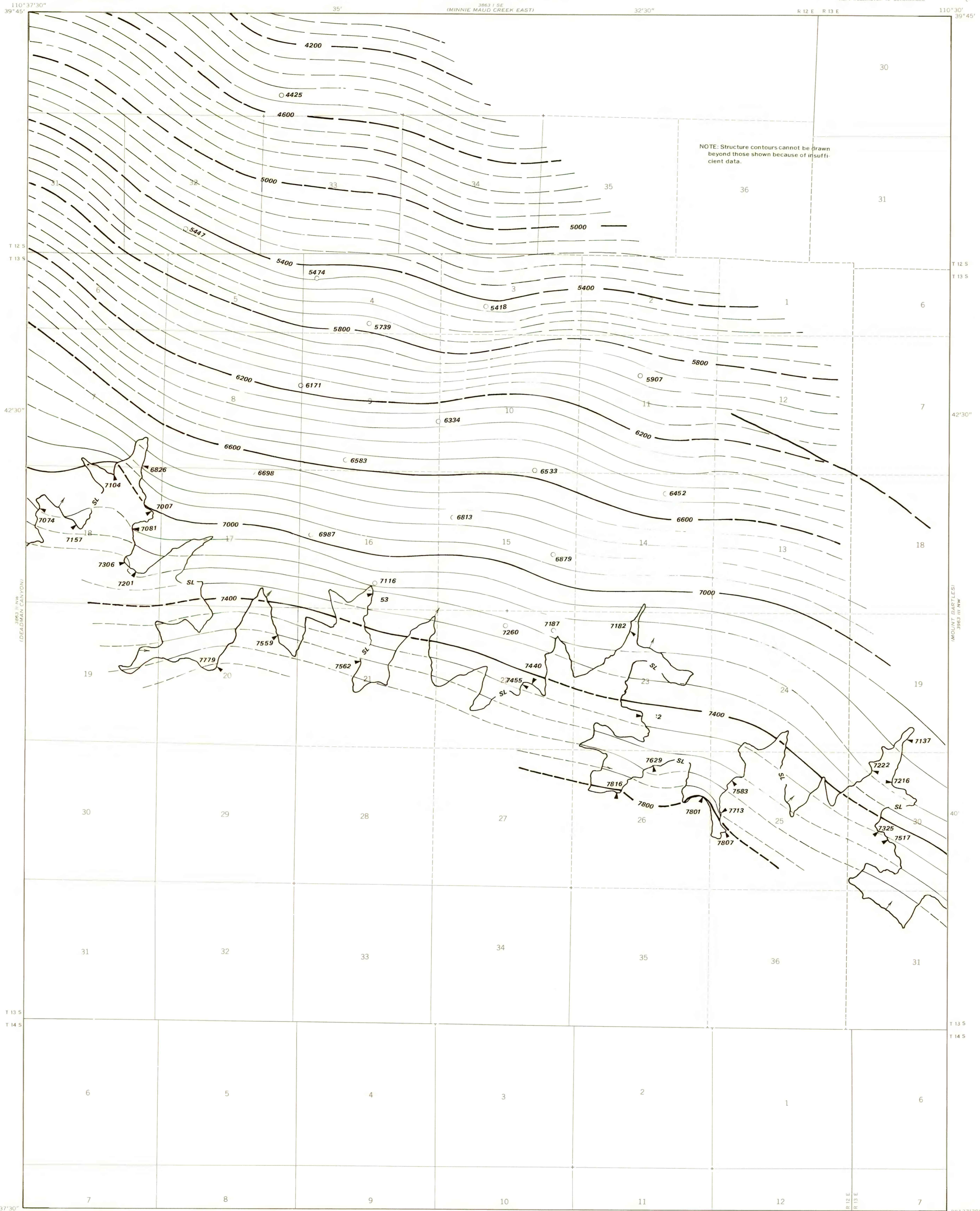
SL

TRACE OF COAL BED OUTCROP—Showing symbol of name of coal bed. Arrow points toward the coal bearing area.

FAULT—Dashed where approximately located.

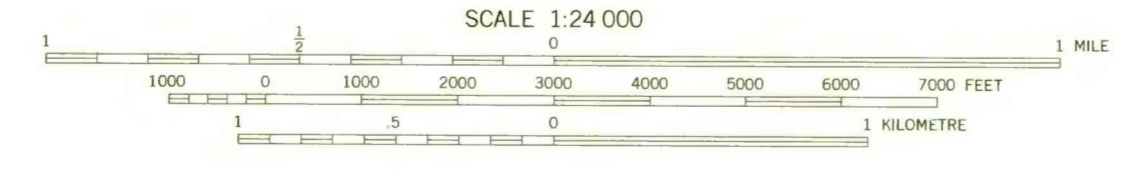
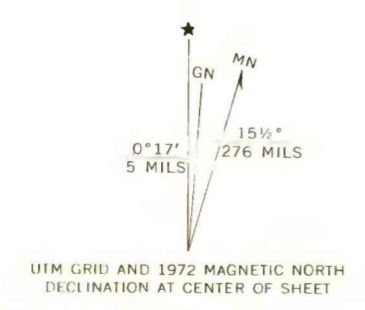
To convert feet to meters, multiply feet by 0.3048.

NOTE: Structure contours cannot be drawn beyond those shown because of insufficient data.



Base from U.S. Geological Survey, 1972

Compiled in 1978



# COAL RESOURCE OCCURRENCE MAP OF THE PINE CANYON QUADRANGLE, CARBON COUNTY, UTAH

BY  
AAA ENGINEERING AND DRAFTING, INC.  
1979

PLATE 5  
STRUCTURE CONTOUR MAP  
OF THE  
LOWER SUNNYSIDE COAL BED