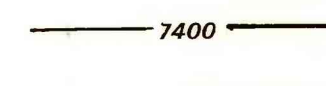


EXPLANATION



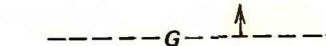
STRUCTURE CONTOURS—Drawn on top of coal bed. Solid where vertical accuracy within 40 feet; long dashed where vertical accuracy possibly not within 40 feet; short dashed where projected above land surface. Contour interval is 80 feet (24.4m). Datum is mean sea level.

6656

DRILL HOLE—Showing altitude of top of coal bed, in feet. Drill holes which did not intersect top of coal bed or from which bed altitude could not be determined, are not shown.

7416

POINT OF MEASUREMENT—Showing altitude of top of coal bed, in feet.



TRACE OF COAL BED OUTCROP—Showing symbol of name of coal bed. Arrow points toward coal-bearing area. Dashed where inferred by present authors.



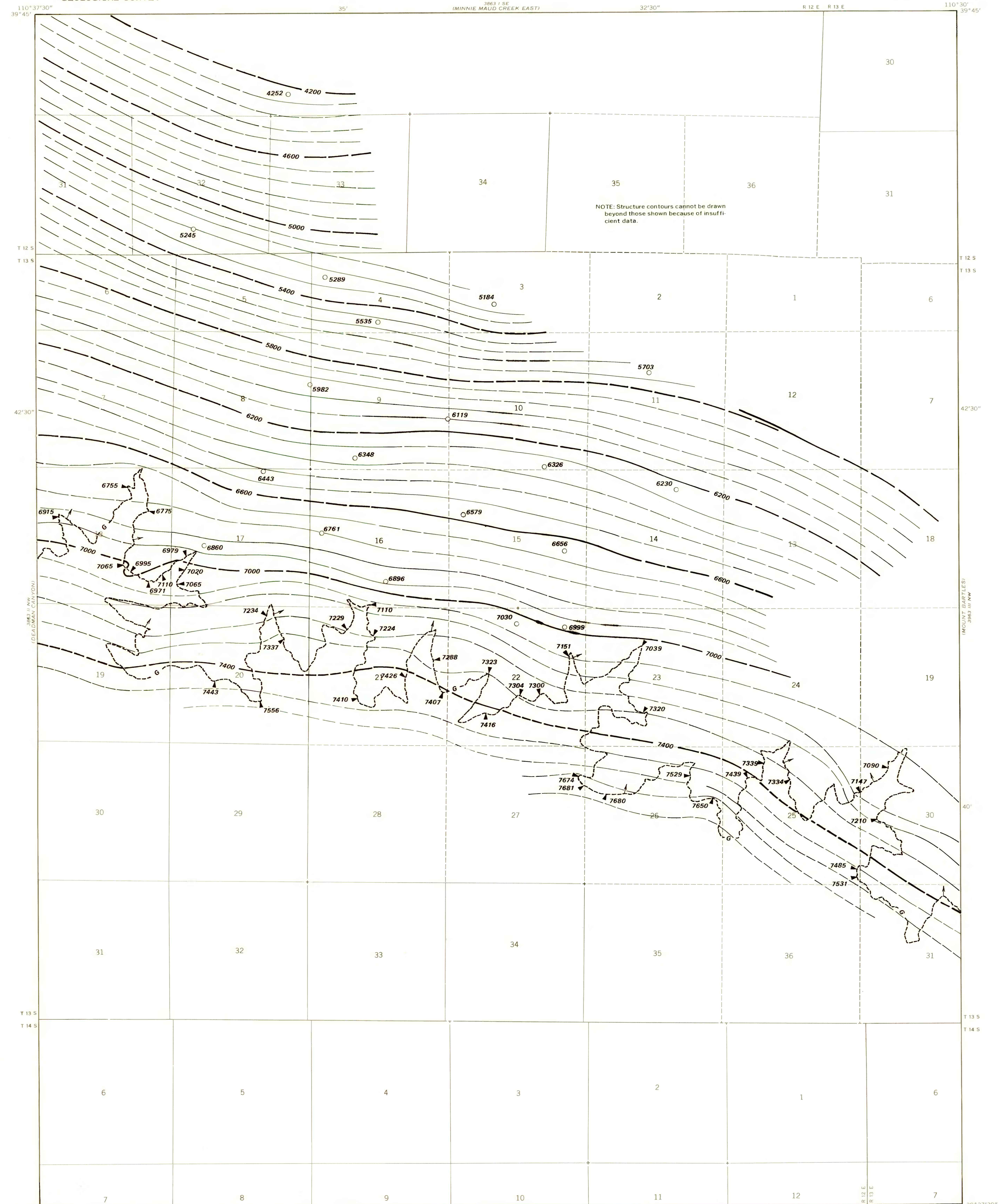
FAULT—Dashed where approximately located.

To convert feet to meters, multiply feet by 0.3048.

UNITED STATES DEPARTMENT OF THE INTERIOR GEOLOGICAL SURVEY

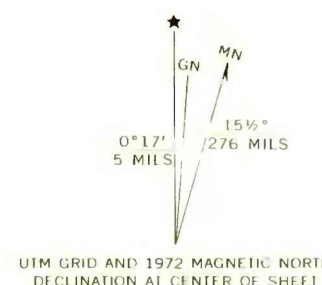
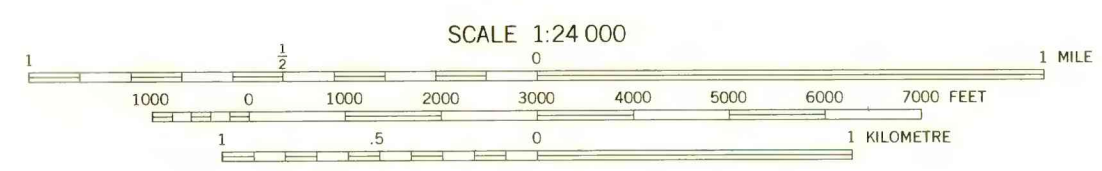
STATE OF UTAH UTAH GEOLOGICAL AND MINERAL SURVEY

PINE CANYON QUADRANGLE UTAH—CARBON CO. 7.5 MINUTE SERIES (TOPOGRAPHIC)



NOTE: Structure contours cannot be drawn beyond those shown because of insufficient data.

Base from U.S. Geological Survey, 1972. Compiled in 1978.



COAL RESOURCE OCCURRENCE MAP OF THE PINE CANYON QUADRANGLE, CARBON COUNTY, UTAH

BY AAA ENGINEERING AND DRAFTING, INC.

1979

PLATE 13 STRUCTURE CONTOUR MAP OF THE GILSON COAL BED