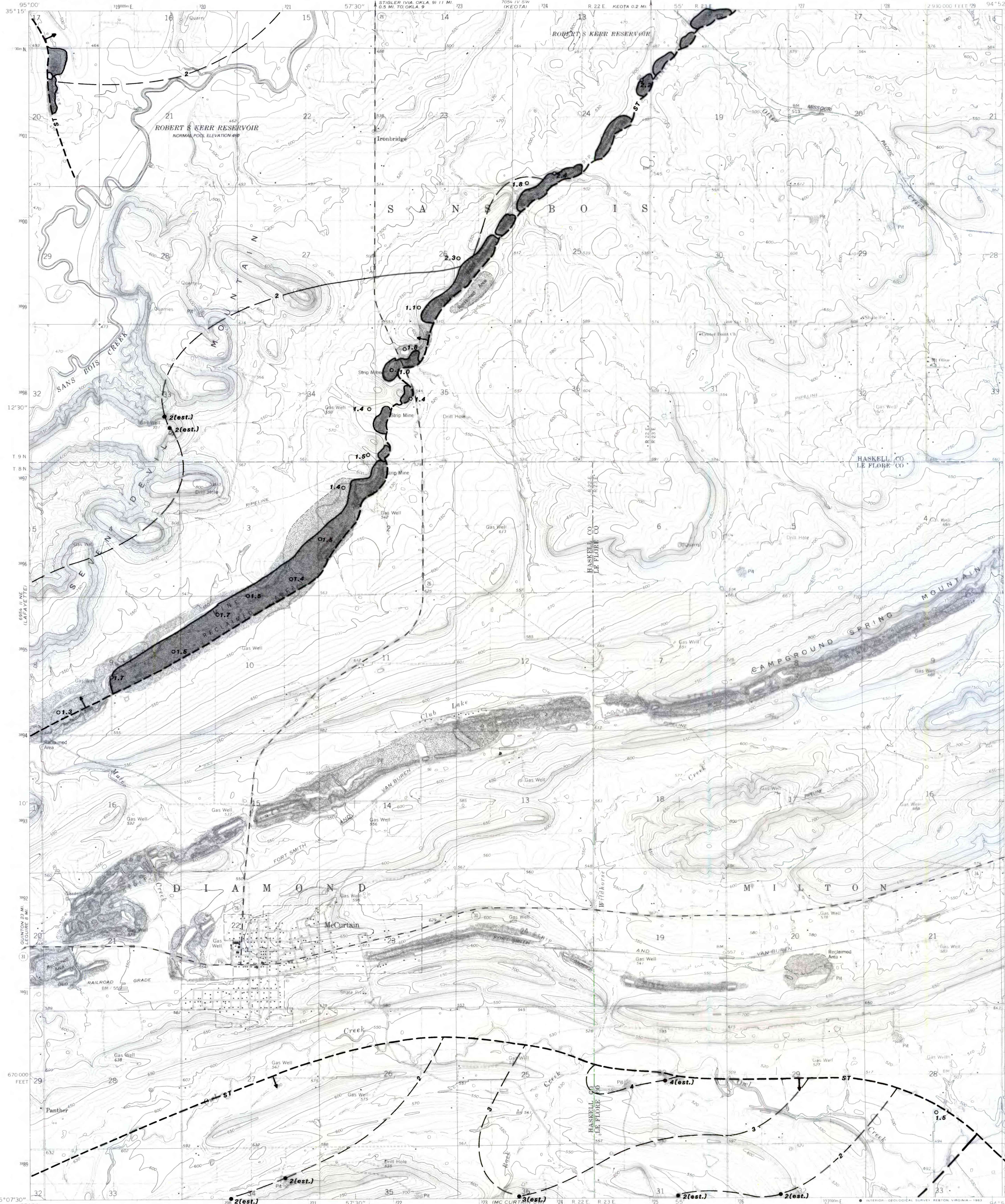


UNITED STATES
DEPARTMENT OF THE INTERIOR
GEOLOGICAL SURVEY

MCCURTAIN QUADRANGLE
OKLAHOMA
7.5 MINUTE SERIES (TOPOGRAPHIC)



EXPLANATION

ISOPACHS—Showing thickness of coal in feet. Dashed where inferred. Isopach interval 1 foot (3.05 m).

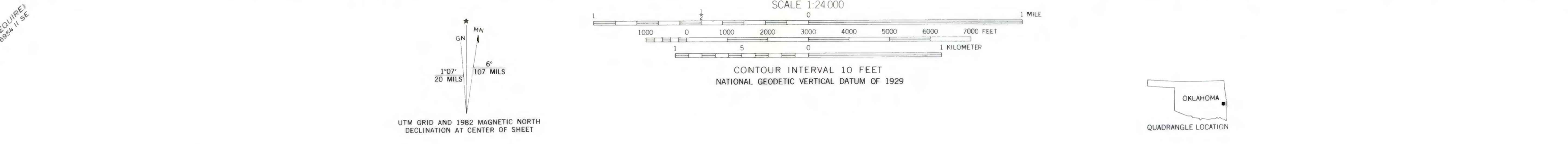
○ 2.4
COAL TEST MEASUREMENT—Showing measured thickness of coal in feet, in areas where the structure map exhibited dip less than 26°. Drill holes which do not intersect the coal or from which a coal thickness could not be determined are not shown.

● 2 (est.)
OIL AND GAS TEST HOLE—Showing thickness of coal estimated from well logs, in feet.

ST
INFERRED TRACE OF COAL BED OUTCROP—Showing symbol of name of coal bed. Arrow points toward coal-bearing area.

MINE WORKINGS AND STRIPPED AREAS—Showing mined-out areas. Boundaries are approximately located.

NOTE: Thickness reported to tenth of feet only when resolution of data permitted.
To convert feet to meters, multiply feet by 0.3048.



This report was prepared under contract to the U.S. Geological Survey, and has not been edited for conformity with Geological Survey editorial standards or stratigraphic nomenclature. Opinions expressed herein do not necessarily represent those of the Geological Survey.

COMPILED IN 1980
This map intended for land-use planning purposes only

FEDERAL COAL RESOURCE OCCURRENCE MAP OF THE MC CURTAIN 7.5-MINUTE QUADRANGLE, HASKELL AND LEFLORE COUNTIES, OKLAHOMA
BY GEOLOGICAL SERVICES OF TULSA, INC., B. T. BRADY, USGS, AND J. L. QUERRY, BLM

PLATE 4
ISOPACH MAP OF THE
STIGLER COAL BED