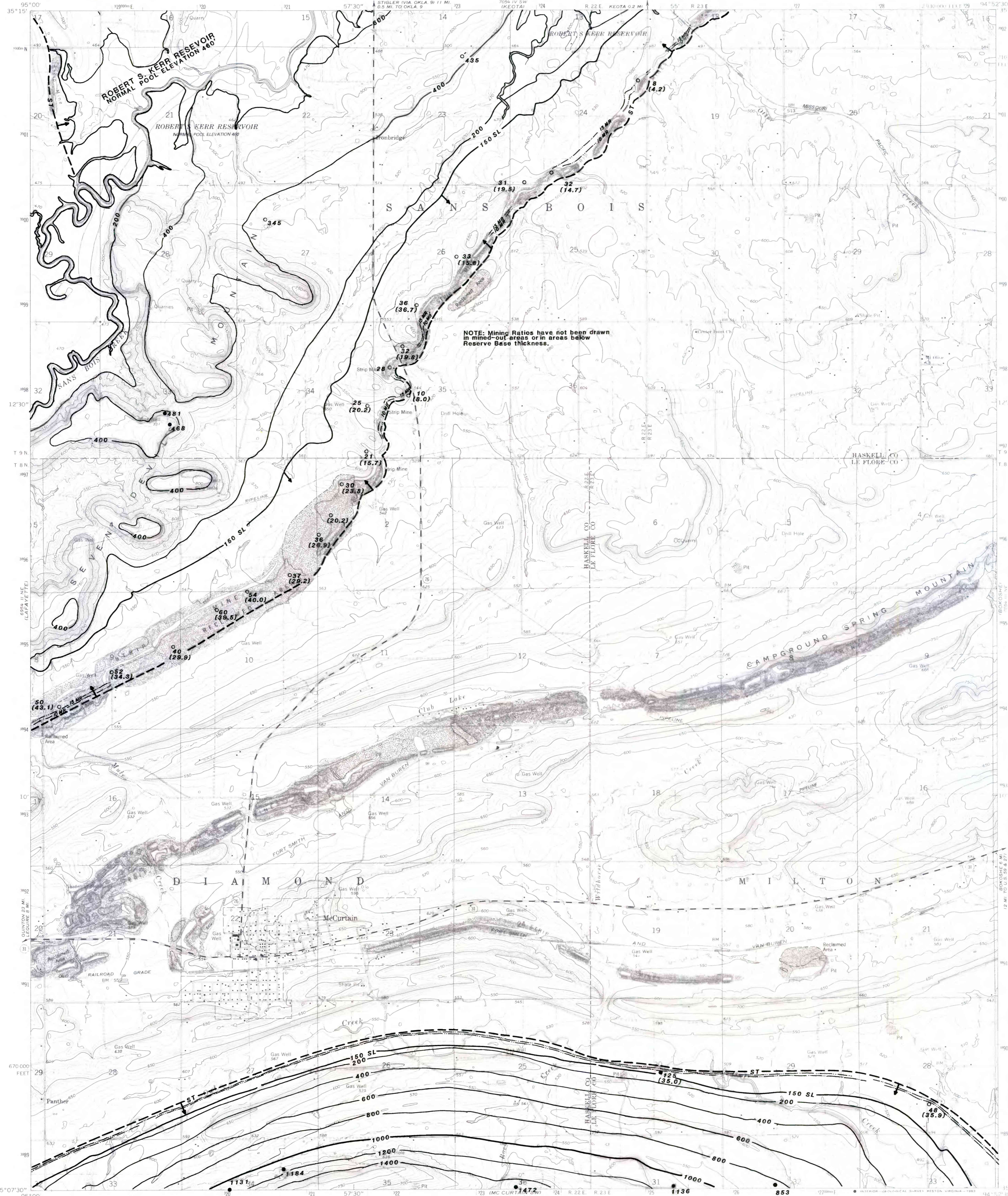


UNITED STATES  
DEPARTMENT OF THE INTERIOR  
GEOLOGICAL SURVEY

MC CURTAIN QUADRANGLE  
OKLAHOMA  
7.5 MINUTE SERIES (TOPOGRAPHIC)



**EXPLANATION**

———— 1000  
———— 1200

OVERBURDEN ISOPACHS—Showing thickness of overburden, in feet, from the surface to the top of the Stigler (Lower McAlester) coal bed. Isopach Interval 200 feet (61.0m).

○ 125  
(82)

COAL TEST MEASUREMENT—Showing thickness of overburden, in feet, from the surface to the top of the Stigler (Lower McAlester) coal bed. Mining ratio numbers in brackets.

● 1184

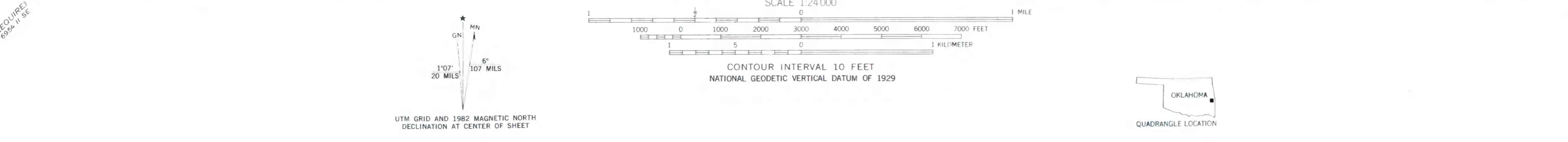
OIL AND GAS TEST HOLE—Showing thickness of overburden, in feet, from the surface to the top of the Stigler (Lower McAlester) coal bed.

———— ST

INFERRED TRACE OF COAL BED OUTCROP—Showing symbol of name of coal bed.

NOTE: Thickness rounded to nearest foot.  
To convert feet to meters, multiply feet by 0.3048.

NOTE: Mining Ratios have not been drawn in mined-out areas or in areas below Reserve Base thickness.



This report was prepared under contract to the U.S. Geological Survey, and has not been edited for conformity with Geological Survey editorial standards or stratigraphic nomenclature. Opinions expressed herein do not necessarily represent those of the Geological Survey.

COMPILED IN 1980  
This map intended for land-use planning purposes only

**FEDERAL COAL RESOURCE OCCURRENCE MAP OF THE MC CURTAIN 7.5-MINUTE QUADRANGLE, HASKELL AND LEFLORE COUNTIES, OKLAHOMA**  
BY GEOLOGICAL SERVICES OF TULSA, INC., B. T. BRADY, USGS, AND J. L. QUERRY, BLM

PLATE 6  
OVERBURDEN ISOPACH AND MINING RATIO MAP OF THE STIGLER COAL BED