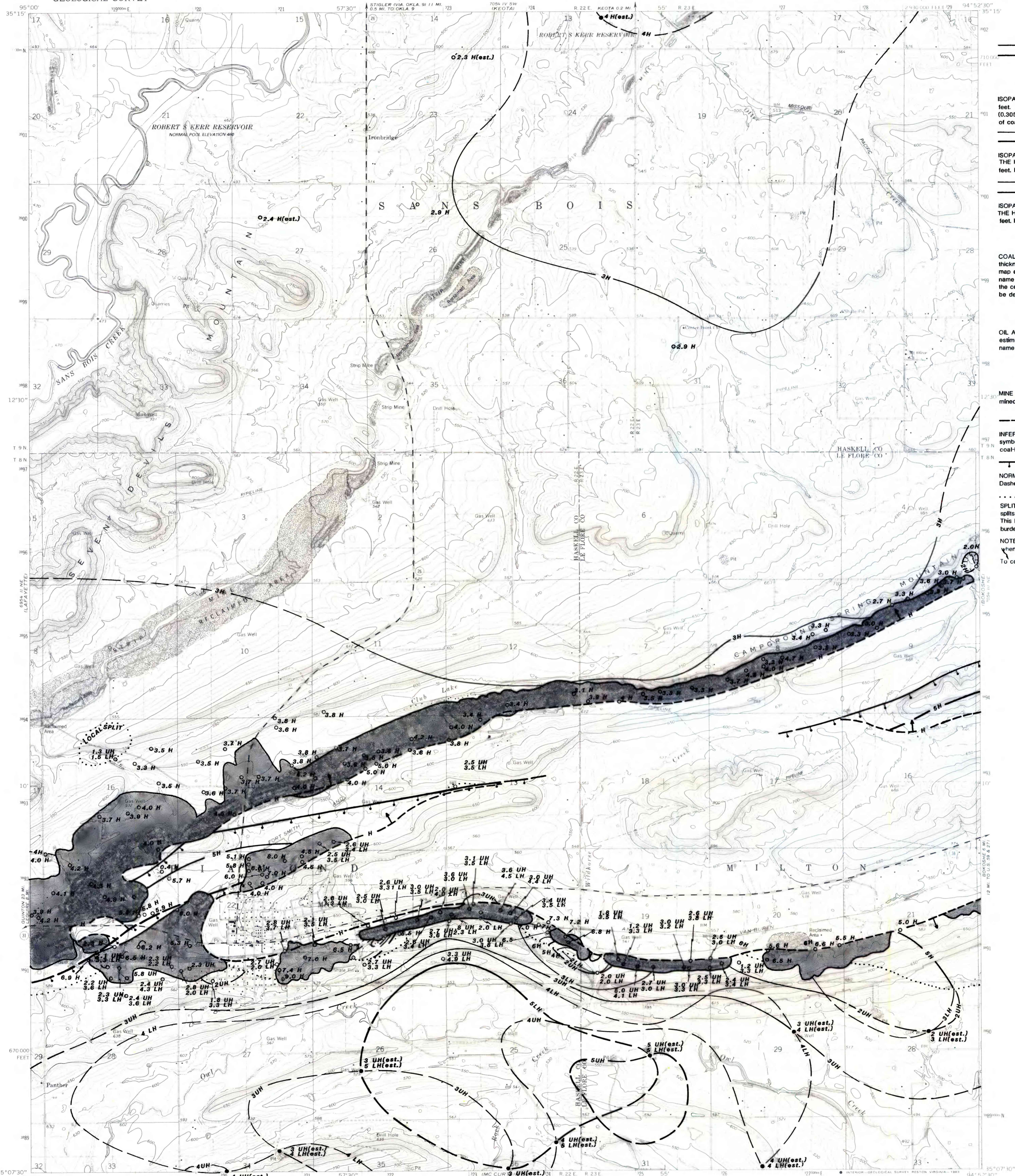


UNITED STATES
DEPARTMENT OF THE INTERIOR
GEOLOGICAL SURVEY

MC CURTAIN QUADRANGLE
OKLAHOMA
7.5 MINUTE SERIES (TOPOGRAPHIC)



EXPLANATION

5 H
3 H

5 UH
4 UH

5 LH
4 LH

1.8 UH
3.5 LH

3 UH (est.)
5 LH (est.)

MINE WORKINGS AND STRIPPED AREAS-Showing mined-out areas. Boundaries are approximately located.

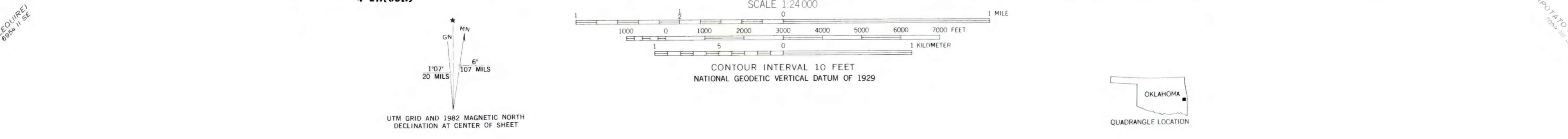
INFERRED TRACE OF COAL BED OUTCROP-Showing symbol of name of coal bed. Arrow points toward coal-bearing area.

NORMAL FAULT-Bar and ball on downthrown side. Dashed where approximately located.

SPLIT LINE-Line along which the Hartshorne coal bed splits into the Upper and Lower Hartshorne coal beds. This line corresponds to the 1 foot (0.305m) interburden isopach.

NOTE: Thickness reported to tenths of feet only when resolution of data permitted.

To convert feet to meters, multiply feet by 0.3048.



This report was prepared under contract to the U.S. Geological Survey, and has not been edited for conformity with Geological Survey editorial standards or stratigraphic nomenclature. Opinions expressed herein do not necessarily represent those of the Geological Survey.

COMPILED IN 1980
This map intended for land-use planning purposes only

FEDERAL COAL RESOURCE OCCURRENCE MAP OF THE MC CURTAIN 7.5-MINUTE QUADRANGLE, HASKELL AND LEFLORE COUNTIES, OKLAHOMA

BY GEOLOGICAL SERVICES OF TULSA, INC., B. T. BRADY, USGS, AND J. L. QUERRY, BLM

PLATE 8
ISOPACH MAP OF THE HARTSHORNE COAL BED AND UPPER AND LOWER SPLITS