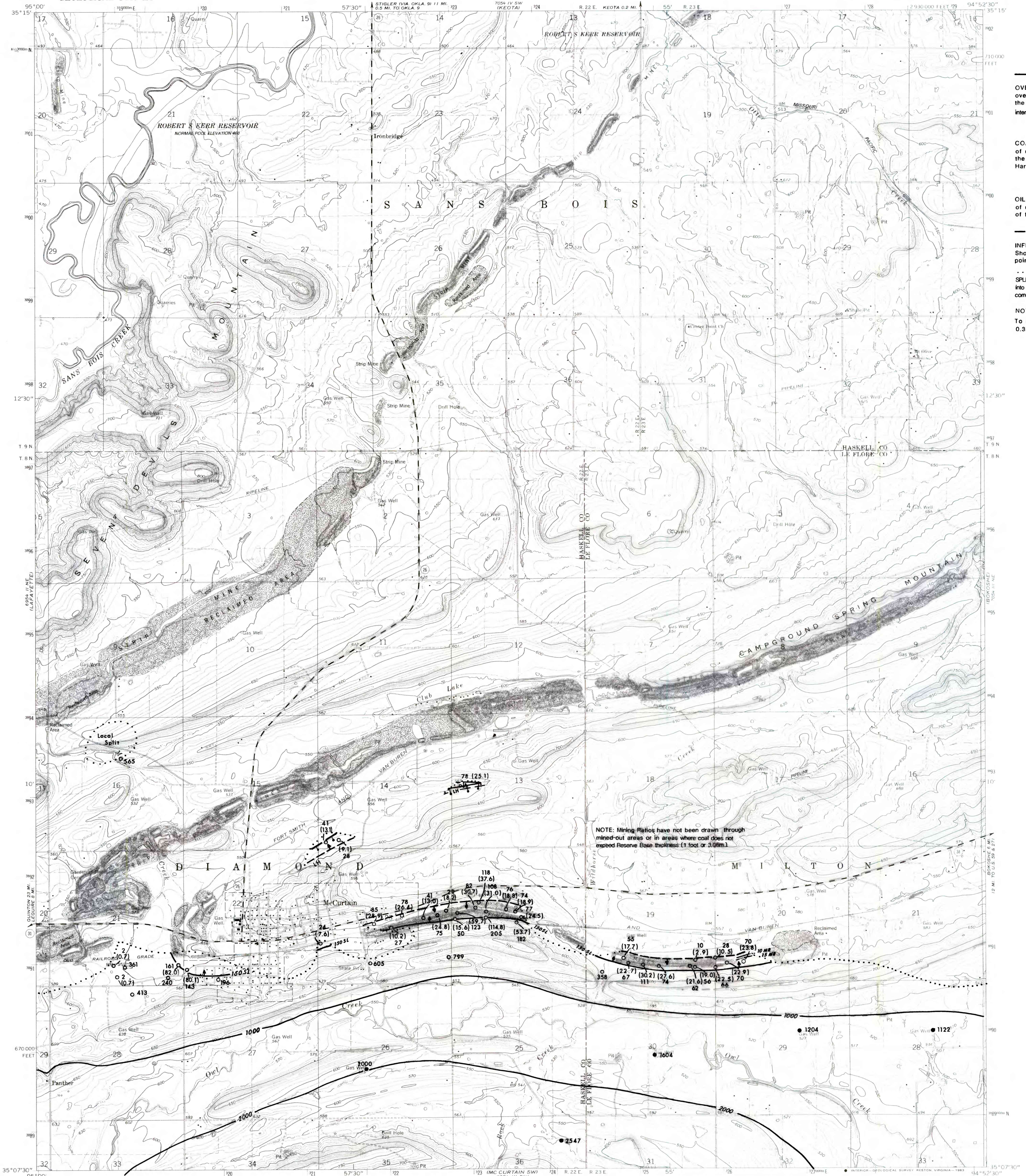


UNITED STATES
DEPARTMENT OF THE INTERIOR
GEOLOGICAL SURVEY

MC CURTAIN QUADRANGLE
OKLAHOMA
7.5 MINUTE SERIES (TOPOGRAPHIC)



EXPLANATION

2000
OVERBURDEN ISOPACHS--Showing thickness of overburden, in feet, from the surface to top of the Lower split of the Hartshorne coal bed. Isopach interval 1000 feet (305m.)

30 (7.8)
COAL TEST MEASUREMENT--Showing thickness of overburden, in feet, (upper number) from the surface to the top of the Lower split of the Hartshorne coal bed. Mining ratio in brackets.

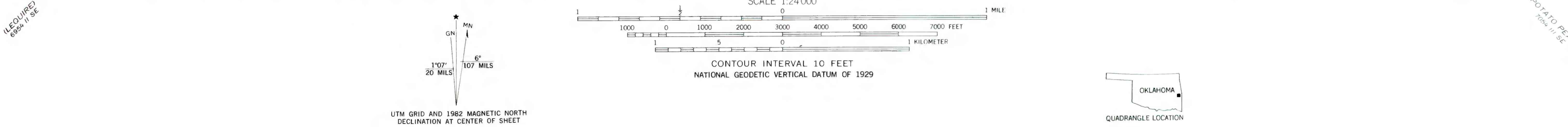
1164
OIL AND GAS TEST HOLE--Showing thickness of overburden, in feet, from the surface to top of the Lower split of the Hartshorne coal bed.

LH
INFERRED TRACE OF COAL BED OUTCROP--Showing symbol of name of coal bed. Arrow points toward coal-bearing area.

.....
SPLIT LINE--Line along which the Hartshorne coal bed splits into the Upper and Lower Hartshorne coal beds. This line corresponds to the 1 foot interburden isopach.

NOTE: Thickness rounded to nearest foot. To convert feet to meters multiply feet by 0.3048.

NOTE: Mining Ratios have not been drawn through mined-out areas or in areas where coal does not exceed Reserve Base thickness (1 foot or 305mm.)



This report was prepared under contract to the U.S. Geological Survey, and has not been edited for conformity with Geological Survey editorial standards or stratigraphic nomenclature. Opinions expressed herein do not necessarily represent those of the Geological Survey.

COMPILED IN 1980
This map intended for land-use planning purposes only

FEDERAL COAL RESOURCE OCCURRENCE MAP OF THE MC CURTAIN 7.5-MINUTE QUADRANGLE, HASKELL AND LEFLORE COUNTIES, OKLAHOMA

BY GEOLOGICAL SERVICES OF TULSA, INC., B. T. BRADY, USGS, AND J. L. QUERRY, BLM