

SEBASTIAN QUADRANGLE, FLORIDA,
1949, PHOTOREVISED 1970.
7.5-minute series, 1:24000

INTRODUCTION

Brevard County is an area of some 1,300 square miles located on the east coast of central Florida. The Sebastian quadrangle, in south Brevard, includes part of the Indian River estuary which separates the mainland from a strip of barrier beach. The Atlantic Ocean occupies the eastern part of the quadrangle. Most of the land area of the quadrangle is in Indian River County (sheet 1).

PURPOSE AND SCOPE

The purpose of this report is to present ground-water data in a usable, readily available format for county planning needs. The scope includes a complete inventory of wells, water-level measurements in selected wells, sampling selected wells for water-quality analysis, literature search, and storage of all data in the U.S. Geological Survey computer bank or manual data library. Wells shown on sheet 1 are those used in the preparation of this report.

Brevard Water Well Survey

This report was prepared by the U.S. Geological Survey and the Brevard Water Well Survey team in cooperation with the Brevard County Board of County Commissioners. The Brevard Water Well Survey is funded through the Comprehensive Education and Training Act and sponsored by Brevard County through the Development Division, Brevard County Planning Department. Primary supervision of the Brevard Water Well Survey was under the U.S. Geological Survey as principal investigator. The following Brevard Water Well Survey team members were instrumental in the production of this report:

Grady Brown, John Curley, Samuel Edwards, Wayne Thompson, and Richard Wheelus. The Brevard Water Well Survey consisted of as many as 19 members during the course of the investigation.

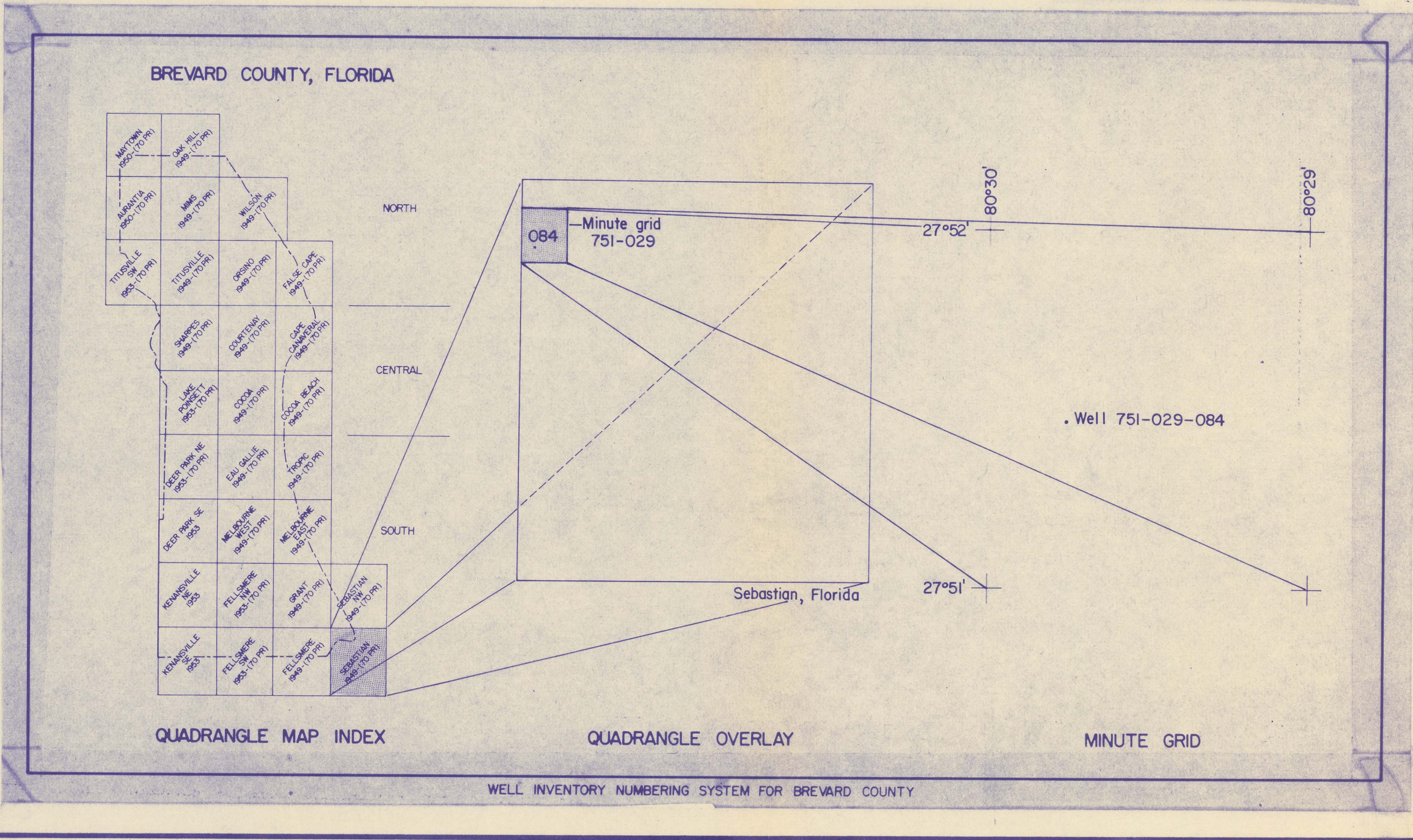
ACKNOWLEDGEMENTS

The authors wish to acknowledge the assistance of the Brevard County Planning Department, County Engineers office, Cartography Department, South Brevard Water Resources Committee, Agricultural Extension Service; the well drillers of Brevard County; and the cooperation of local residents.

WELL-NUMBERING SYSTEM

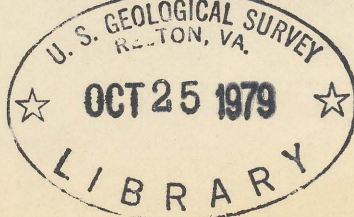
The well-numbering system used in this report is based on latitude and longitude coordinates derived from a grid of 1-minute parallels of latitude and meridians of longitude (sheet 1). Wells within these minute grids are assigned numbers that consist of the last digit of the degree and the two digits of the minute of the line of latitude on the south side of the grid, the last digit of the degree and the two digits of the minute of the line of longitude on the east side of the grid, and a sequence number assigned in the order in which the well within the minute grid was inventoried. For example, well number 751-029-084 was the 84th well inventoried in the 1-minute grid north of latitude 27°51' and west of longitude 80°29'.

In order to conserve space on sheet 1, only the well sequence number is shown. The well number can be reconstructed if necessary by gridding off the maps according to the latitude and longitude tick marks in sheet 1 and observing the methodology in the preceding paragraph.



OVERLAY MAP OF THE SEBASTIAN QUADRANGLE, FLORIDA; WELL LOCATIONS AND NUMBERING SYSTEM AND QUADRANGLE MAP INDEX, BREVARD COUNTY

By
James M. Frazee, Jr.,
and
C. P. Laughlin
1979



M(200)
R290
79-501
541
01