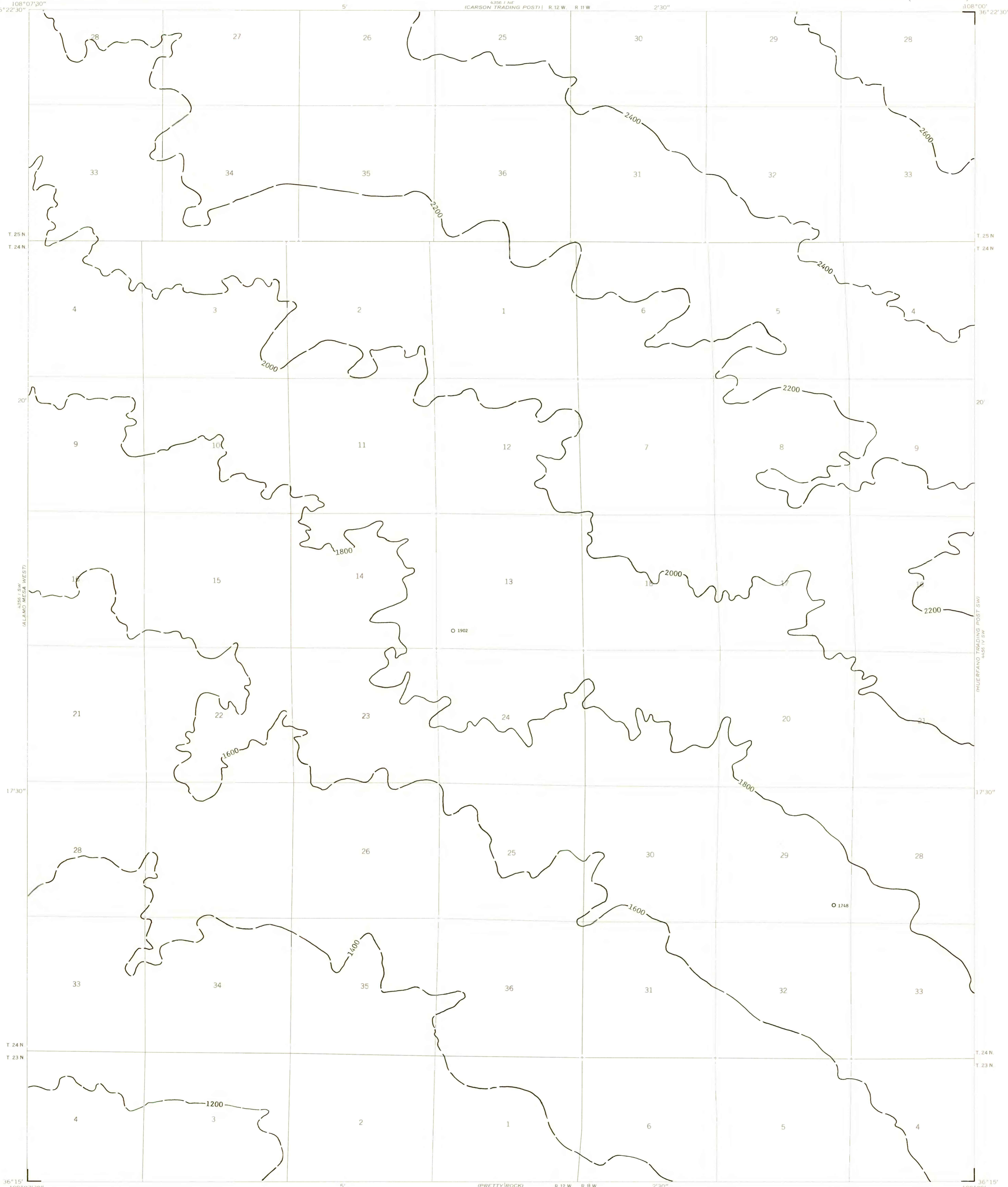


EXPLANATION

1800
OVERBURDEN ISOPACHS - Showing thickness of overburden, in feet, from the surface to the top of the Menefee 1 coal bed. Isopach interval 200 feet (61 meters). Isopachs long dashed where inferred, short dashed where projected through noncoal-bearing areas.

○ 1902
DRILL HOLE - Showing thickness of overburden, in feet, from the surface to the top of the Menefee 1 coal bed.

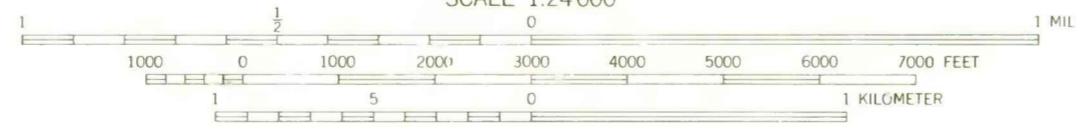
To convert feet to meters, multiply feet by 0.3048.



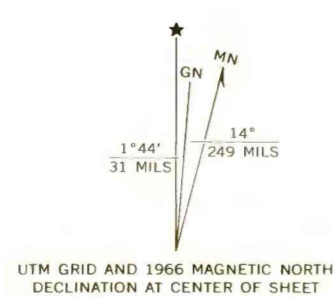
Base from U.S. Geological Survey, 1966

(PRETTY ROCK)
4356 II NE
SCALE 1:24000

Compiled in 1979



CONTOUR INTERVAL 20 FEET
DATUM IS MEAN SEA LEVEL



**COAL RESOURCE OCCURRENCE MAP OF THE ALAMO MESA EAST
QUADRANGLE, SAN JUAN COUNTY, NEW MEXICO**

**BY
DAMES & MOORE
1979**

PLATE 6
ISOPACH MAP OF OVERBURDEN
OF THE MENEFEE 1 COAL BED

This map was prepared under contract to the U.S. Geological Survey and has not been edited for conformity with Geological Survey editorial standards. Opinions and conclusions expressed herein do not necessarily represent those of the Geological Survey.