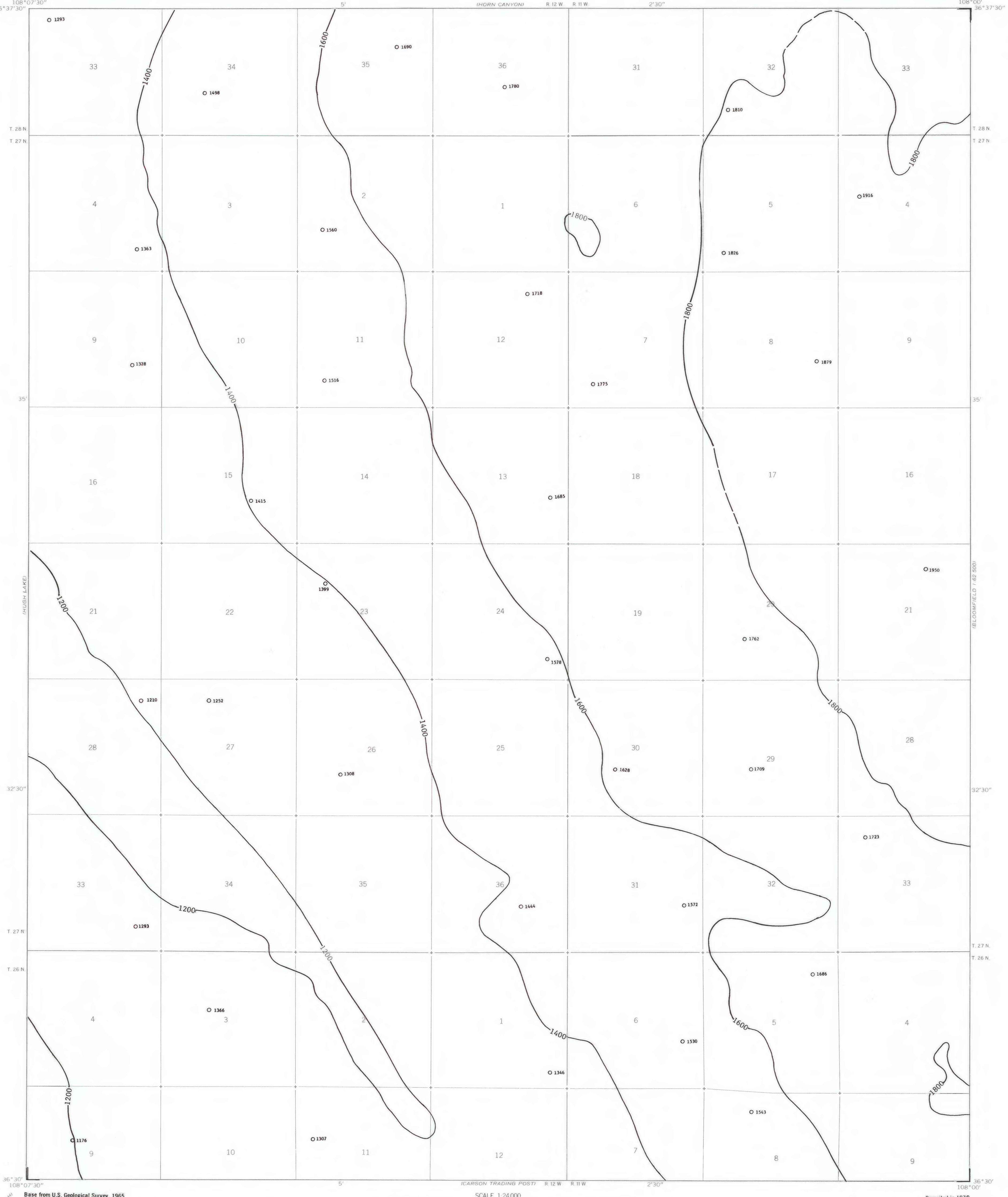


EXPLANATION

— 1800 —
OVERBURDEN ISOPACHS - Showing thickness of overburden, in feet, from the surface to the top of the Fruitland 1 coal bed. Isopach interval 200 feet (61 meters). Isopachs dashed where projected through mineral-bearing area.

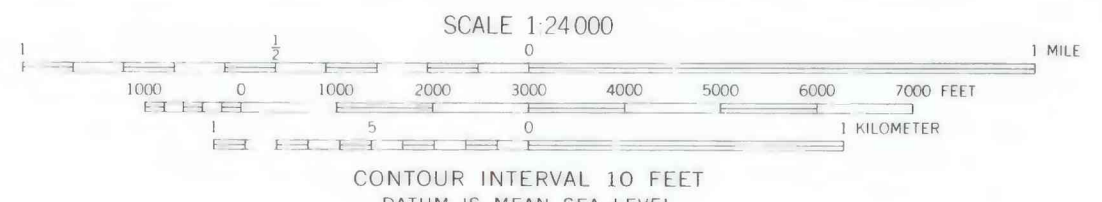
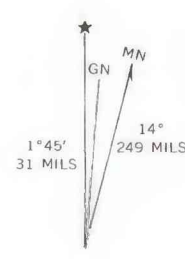
○ 1686
DRILL HOLE - Showing thickness of overburden, in feet, from the surface to the top of the Fruitland 1 coal bed.

To convert feet to meters, multiply feet by 0.3048.



Base from U.S. Geological Survey, 1965

Compiled in 1979



CONTOUR INTERVAL 10 FEET
DATUM IS MEAN SEA LEVEL



**COAL RESOURCE OCCURRENCE MAP OF THE GALLEGOS TRADING POST
QUADRANGLE, SAN JUAN COUNTY, NEW MEXICO**
BY
DAMES & MOORE
1979

This map was prepared under contract to the U.S. Geological Survey and has not been edited for conformity with Geological Survey editorial standards. Opinions and conclusions expressed herein do not necessarily represent those of the Geological Survey.