

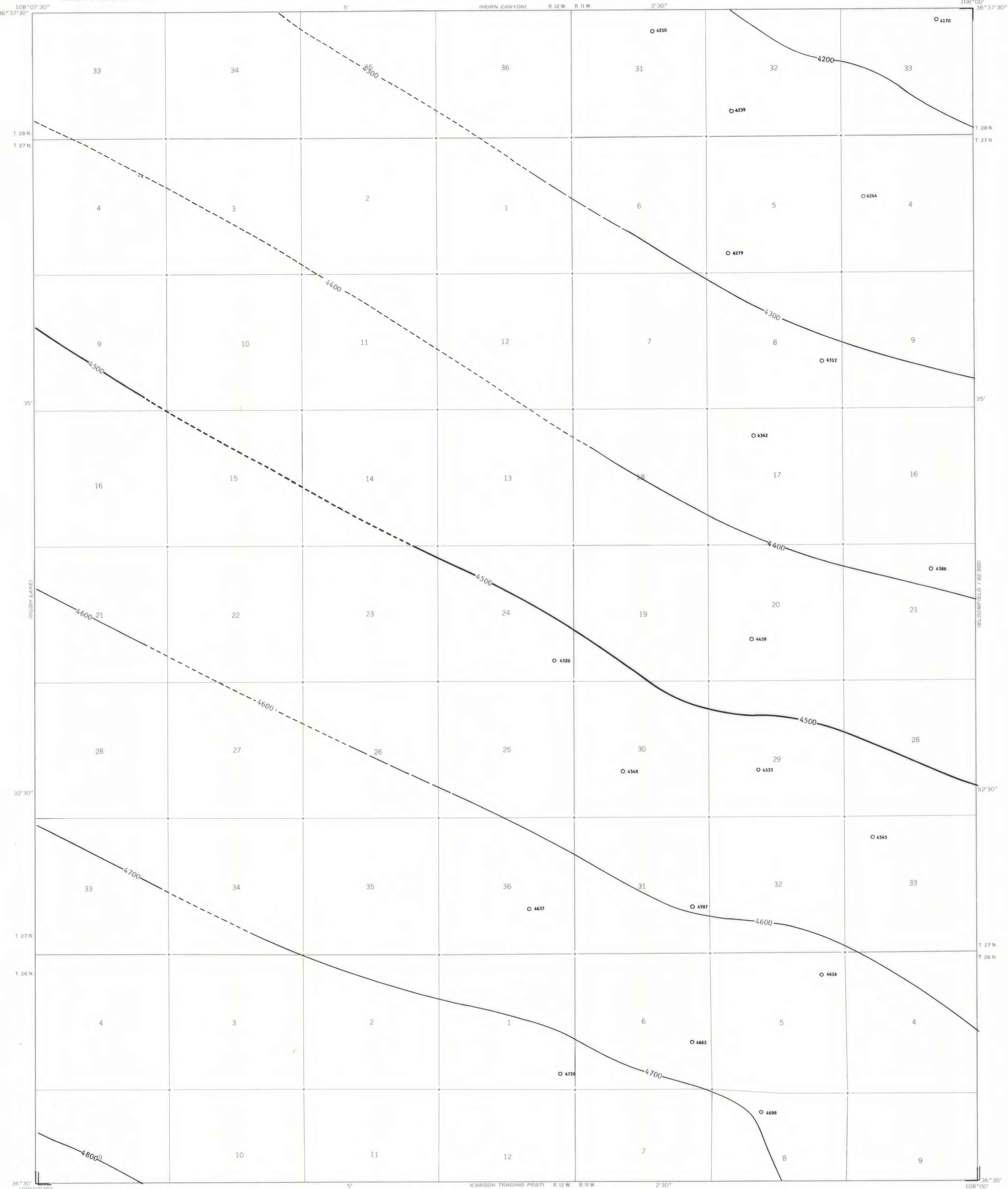
EXPLANATION

— 4500 —
— 4600 —
STRUCTURE CONTOURS - Drawn on top of the Fruitland 2 coal bed. Contour interval 100 feet (30.3 meters). Datum is mean sea level. Contours long dashed where inferred, short dashed where projected through noncoal-bearing area.

○ 4388
DRILL HOLE - Showing altitude at the top of the Fruitland 2 coal bed, in feet.

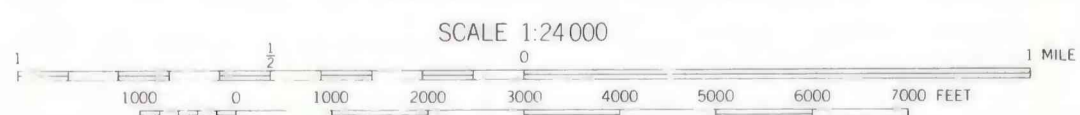
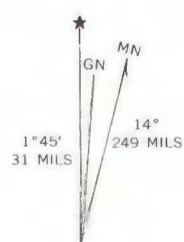
To convert feet to meters, multiply feet by 0.3048.

Fruitland coal beds contoured as a single surface on this map are equivalent in stratigraphic position but may not be continuous.

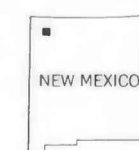


Base from U.S. Geological Survey, 1965

Compiled in 1979



CONTOUR INTERVAL 10 FEET
DATUM IS MEAN SEA LEVEL



COAL RESOURCE OCCURRENCE MAP OF THE GALLEGOS TRADING POST
QUADRANGLE, SAN JUAN COUNTY, NEW MEXICO
BY
DAMES & MOORE
1979

This map was prepared under contract to the U.S. Geological Survey and has not been edited for conformity with Geological Survey editorial standards. Opinions and conclusions expressed herein do not necessarily represent those of the Geological Survey.