

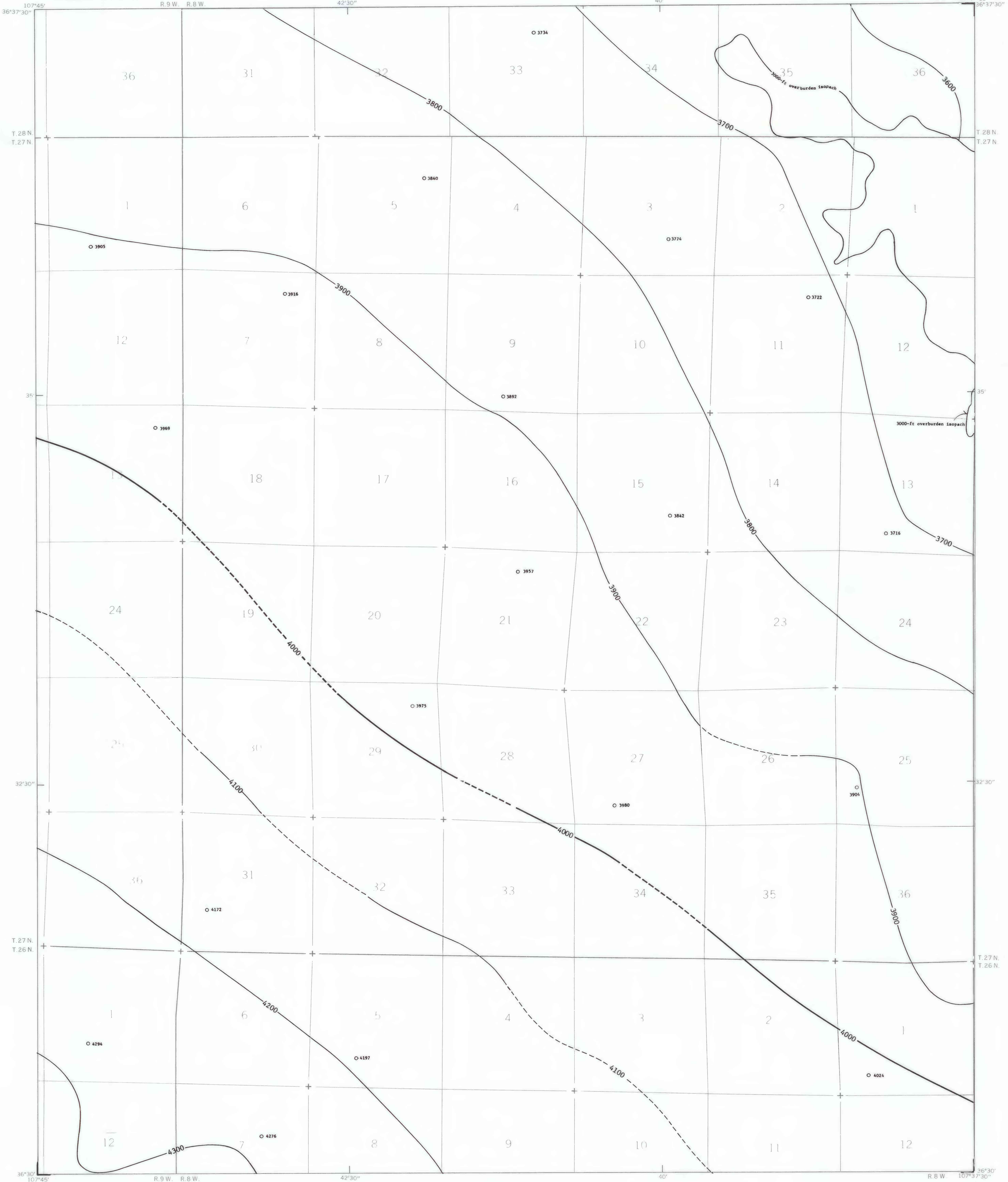
EXPLANATION

— 4000 —
— 4100 —
STRUCTURE CONTOURS - Drawn on top of the
Fruitland 1 coal bed. Contour interval
100 feet (30.3 meters). Datum is mean
sea level. Contours dashed where pro-
jected through noncoal-bearing area.

○ 3980
DRILL HOLE - Showing altitude at the top
of the Fruitland 1 coal bed, in feet.

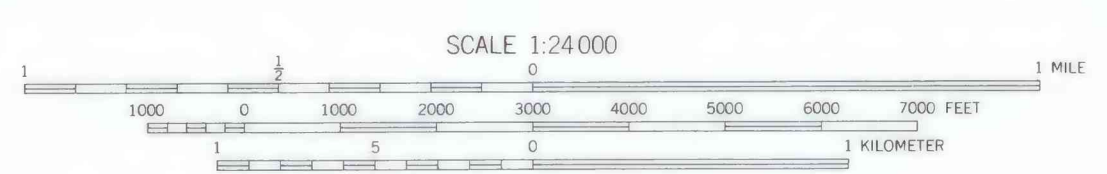
To convert feet to meters, multiply feet
by 0.3048.

Fruitland coal beds contoured as a single
surface on this map are equivalent in
stratigraphic position but may not be
continuous.



Base from U.S. Geological Survey, 1959

Compiled in 1979



COAL RESOURCE OCCURRENCE MAP OF THE SOUTHWEST QUARTER OF THE
GOULD PASS 15-MINUTE QUADRANGLE, SAN JUAN AND RIO ARRIBA COUNTIES, NEW MEXICO

BY
DAMES & MOORE
1979

PLATE 5
STRUCTURE CONTOUR MAP
OF THE FRUITLAND 1 COAL BED

This map was prepared under contract to the U.S. Geological Survey and has not been edited for conformity with Geological Survey editorial standards. Opinions and conclusions expressed herein do not necessarily represent those of the Geological Survey.