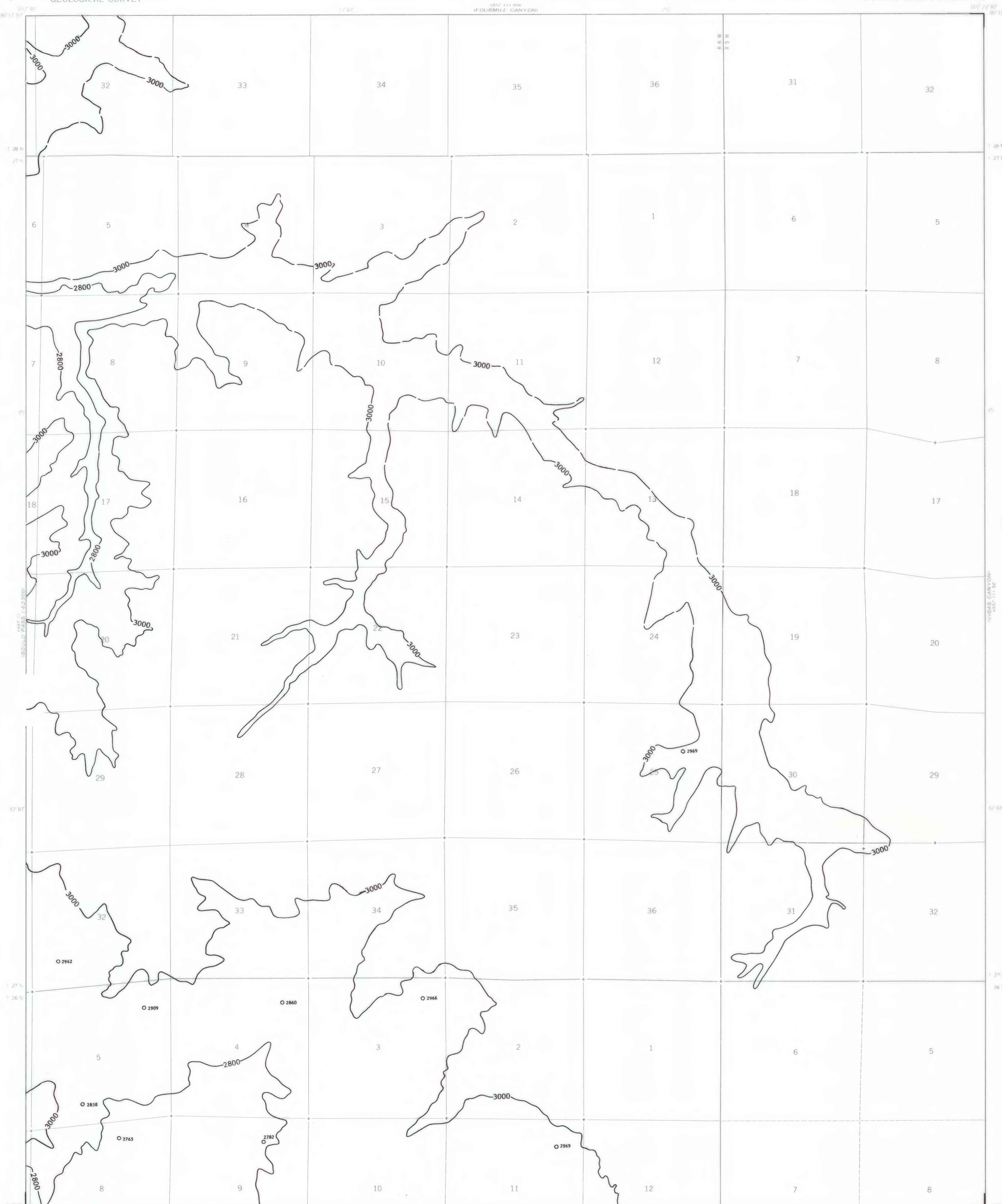


EXPLANATION

3000
OVERBURDEN ISOPACHS - Showing thickness of overburden, in feet, from the surface to the top of the Fruitland 3 coal bed. Isopach interval 200 feet (61 meters). Isopachs dashed where inferred.

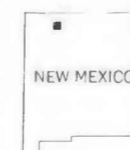
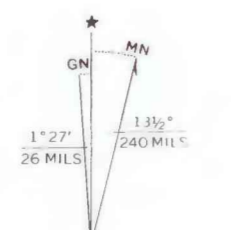
○ 2860
DRILL HOLE - Showing thickness of overburden, in feet, from the surface to the top of the Fruitland 3 coal bed.

To convert feet to meters, multiply feet by 0.3048.



Base from U.S. Geological Survey, 1963

Compiled in 1979



COAL RESOURCE OCCURRENCE MAP OF SANTOS PEAK QUADRANGLE,
RIO ARriba COUNTY, NEW MEXICO

BY
DAMES & MOORE
1979

PLATE 14
ISOPACH MAP OF OVERBURDEN
OF THE FRUITLAND 3 COAL BED

This map was prepared under contract to the U.S. Geological Survey and has not been edited for conformity with Geological Survey editorial standards. Opinions and conclusions expressed herein do not necessarily represent those of the Geological Survey.