

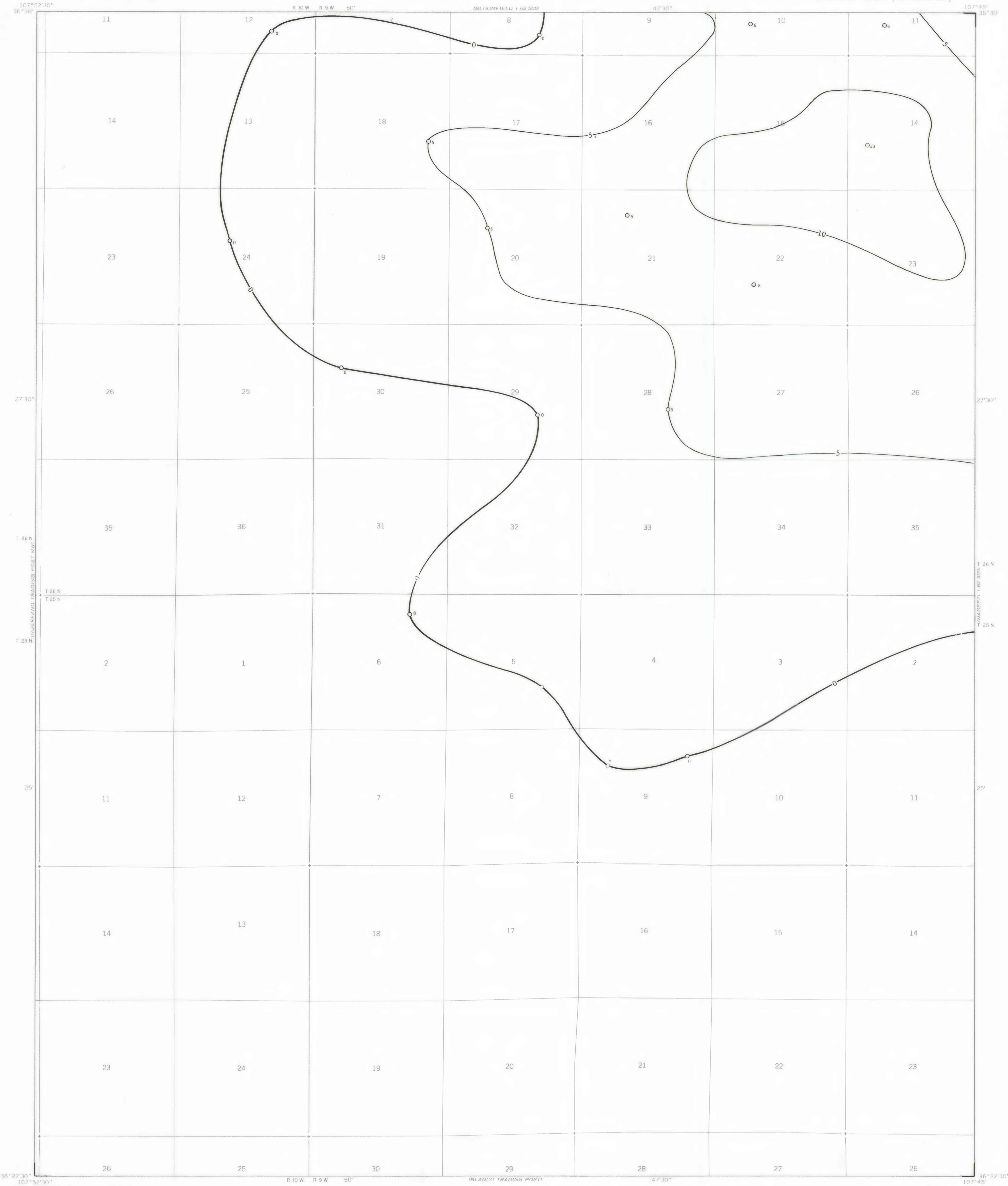
EXPLANATION

— 0 —
— 5 —
ISOPACHS OF THE FRUITLAND 2 COAL BED -
Showing thickness, in feet. Isopach
interval 5 feet (1.5 meters).

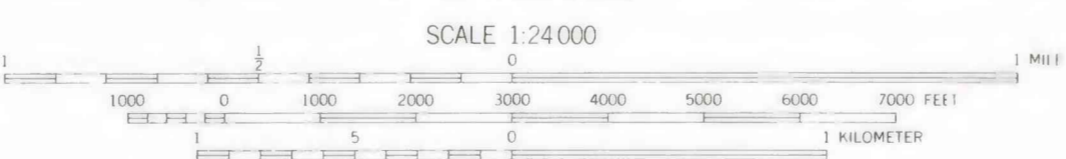
○ 8
DRILL HOLE - Showing thickness of the Fruit-
land 2 coal bed, in feet.

To convert feet to meters, multiply feet
by 0.3048.

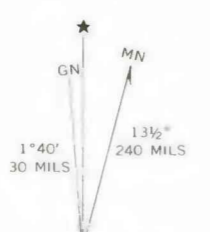
Fruitland coal beds isopached as a single bed
on this map are equivalent in stratigraphic
position but may not be continuous.



Base from U.S. Geological Survey, 1966



Compiled in 1979



**COAL RESOURCE OCCURRENCE MAP OF THE HUERFANO TRADING POST
QUADRANGLE, SAN JUAN COUNTY, NEW MEXICO**

**BY
DAMES & MOORE
1979**

This map was prepared under contract to the U.S. Geological Survey and has not been edited for conformity with Geological Survey editorial standards. Opinions and conclusions expressed herein do not necessarily represent those of the Geological Survey.