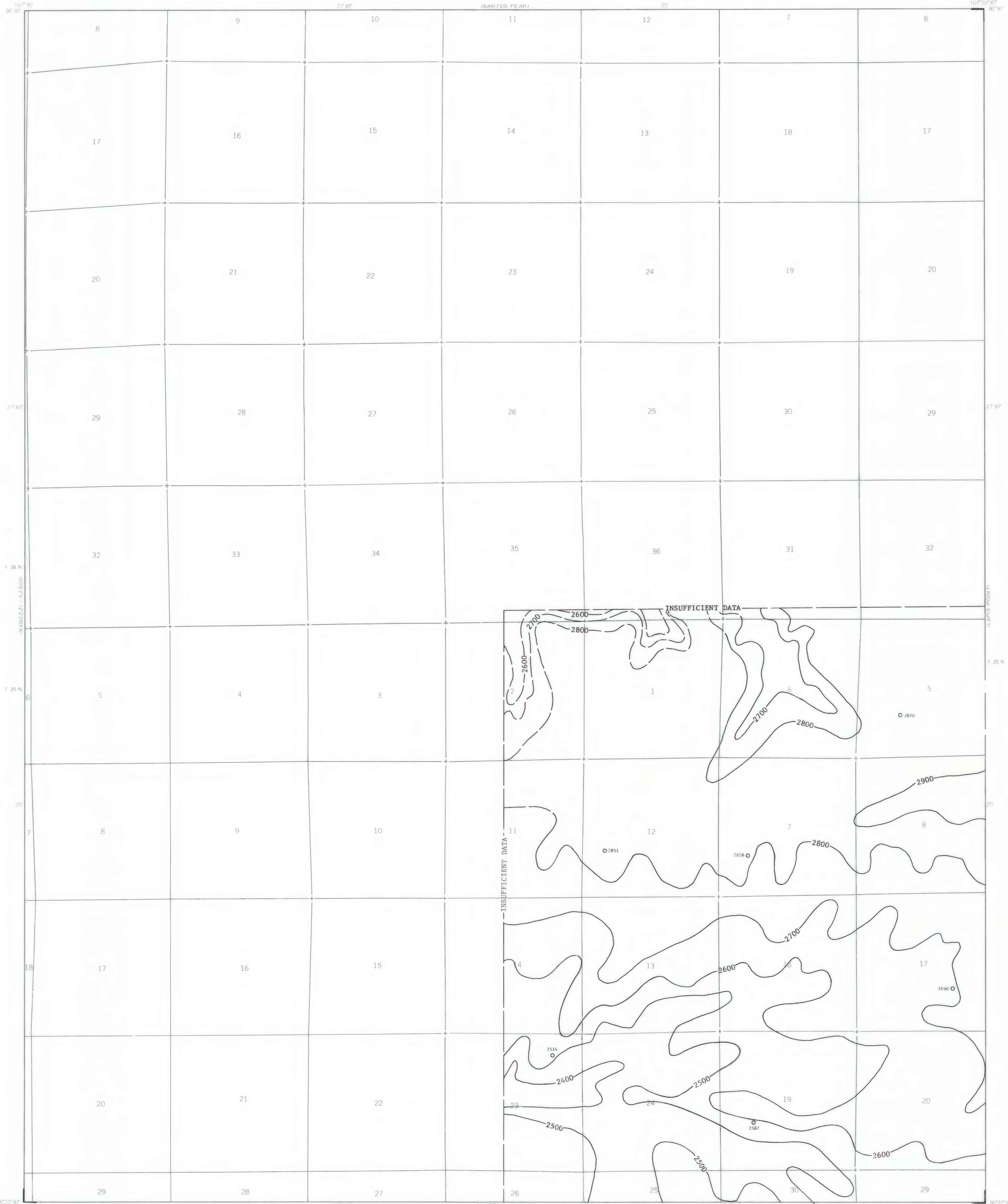


EXPLANATION

2800  
OVERBURDEN ISOPACHS - Showing thickness of overburden, in feet, from the surface to the top of the Fruitland I coal bed. Isopach interval 100 feet (30.5 meters). Isopachs dashed where projected through noncoal-bearing areas.

○ 2870  
DRILL HOLE - Showing thickness of overburden, in feet, from the surface to the top of the Fruitland I coal bed.

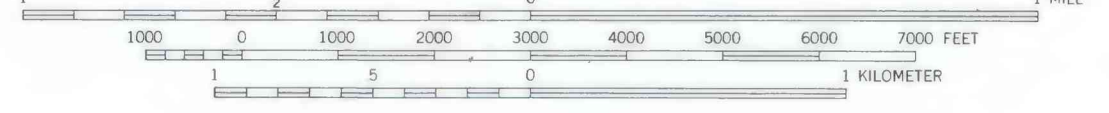
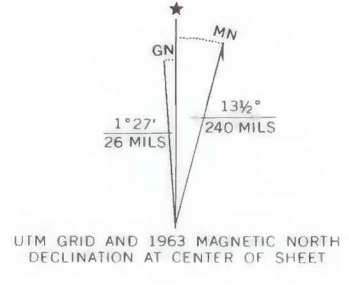
To convert feet to meters, multiply feet by 0.3048.



Base from U.S. Geological Survey, 1963

SCALE 1:24,000

Compiled in 1979



**COAL RESOURCE OCCURRENCE MAP OF THE GONZALES MESA QUADRANGLE,  
RIO ARriba COUNTY, NEW MEXICO**  
**BY  
DAMES & MOORE  
1979**

This map was prepared under contract to the U.S. Geological Survey and has not been edited for conformity with Geological Survey editorial standards. Opinions and conclusions expressed herein do not necessarily represent those of the Geological Survey.