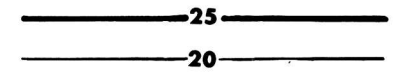
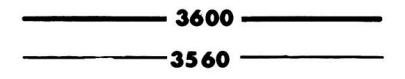


OPEN-FILE REPORT  
This report has not been edited for conformity with  
U.S. Geological Survey editorial standards or  
stratigraphic nomenclature.

EXPLANATION



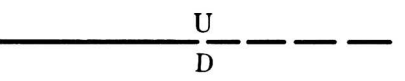
ISOPACHS OF THE COAL BED—Showing thickness, in feet. Isopach interval 5 feet.



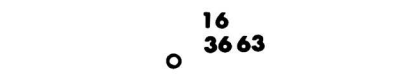
STRUCTURE CONTOURS—Drawn on the top of the coal bed. Dashed where projected beyond boundary of coal. Contour interval 40 feet (12.2 m). Datum is mean sea level.



BOUNDARY OF COAL DEPOSIT—Drawn along the outcrop of coal bed and/or the contact between burned and unburned coal (dashed where inferred by present author beyond the limits of original data). Arrows point toward coal-bearing area. Numbers at triangle are coal bed thickness and altitude at the top of the coal bed, measured in feet.

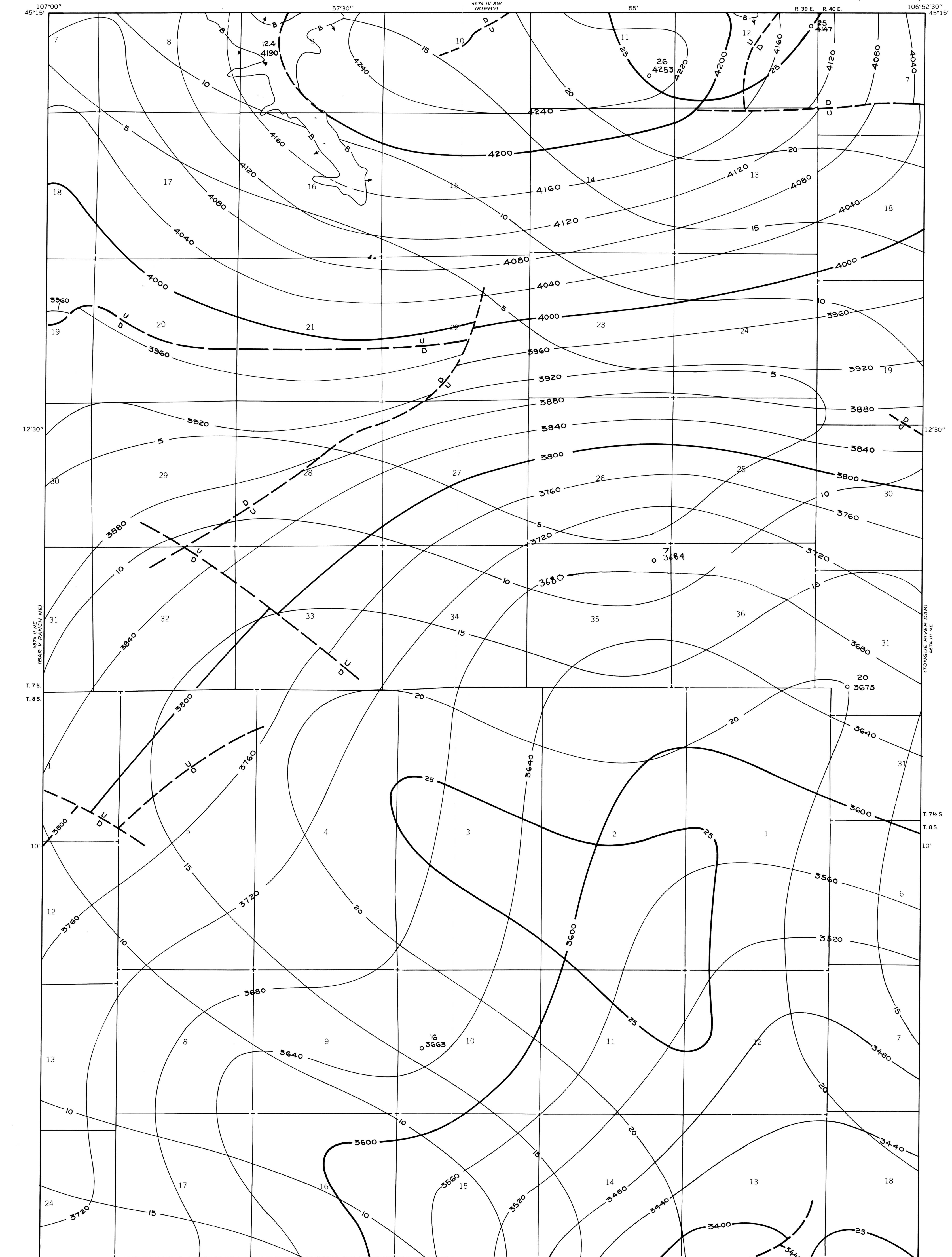


FAULT—Dashed where approximately located. U, up-thrown side; D, down-thrown side.



DRILL HOLE—Showing thickness and altitude at the top of the coal bed, in feet.

To convert feet to meters, multiply feet by 0.3048.

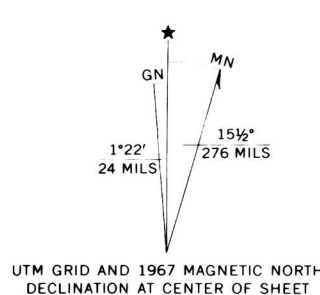
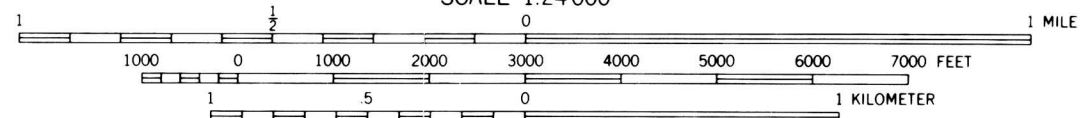


Base map from U.S. Geological Survey, 1967

(PEARL SCHOOL)  
4674 JV SW

SCALE 1:24,000

Compiled in 1977



UTM GRID AND 1967 MAGNETIC NORTH  
DECLINATION AT CENTER OF SHEET



QUADRANGLE LOCATION

COAL RESOURCE OCCURRENCE MAP OF THE HALF MOON HILL QUADRANGLE,  
BIG HORN COUNTY, MONTANA

BY  
COLORADO SCHOOL OF MINES RESEARCH INSTITUTE  
1979

PLATE 21  
ISOPACH AND STRUCTURE CONTOUR  
MAP OF THE CANYON COAL BED