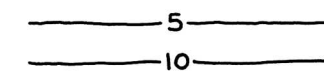
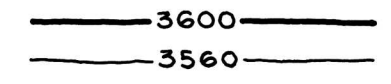


OPEN-FILE REPORT  
This report has not been edited for conformity with  
U.S. Geological Survey editorial standards or  
stratigraphic nomenclature.

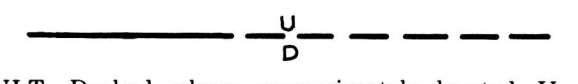
EXPLANATION



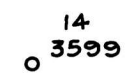
ISOPACHS OF THE COAL BED—Showing thickness, in feet. Isopach interval 5 feet.



STRUCTURE CONTOURS—Drawn on the top of the coal bed. Dashed where projected beyond boundary of coal. Contour interval 40 feet (12.2 m). Datum is mean sea level.

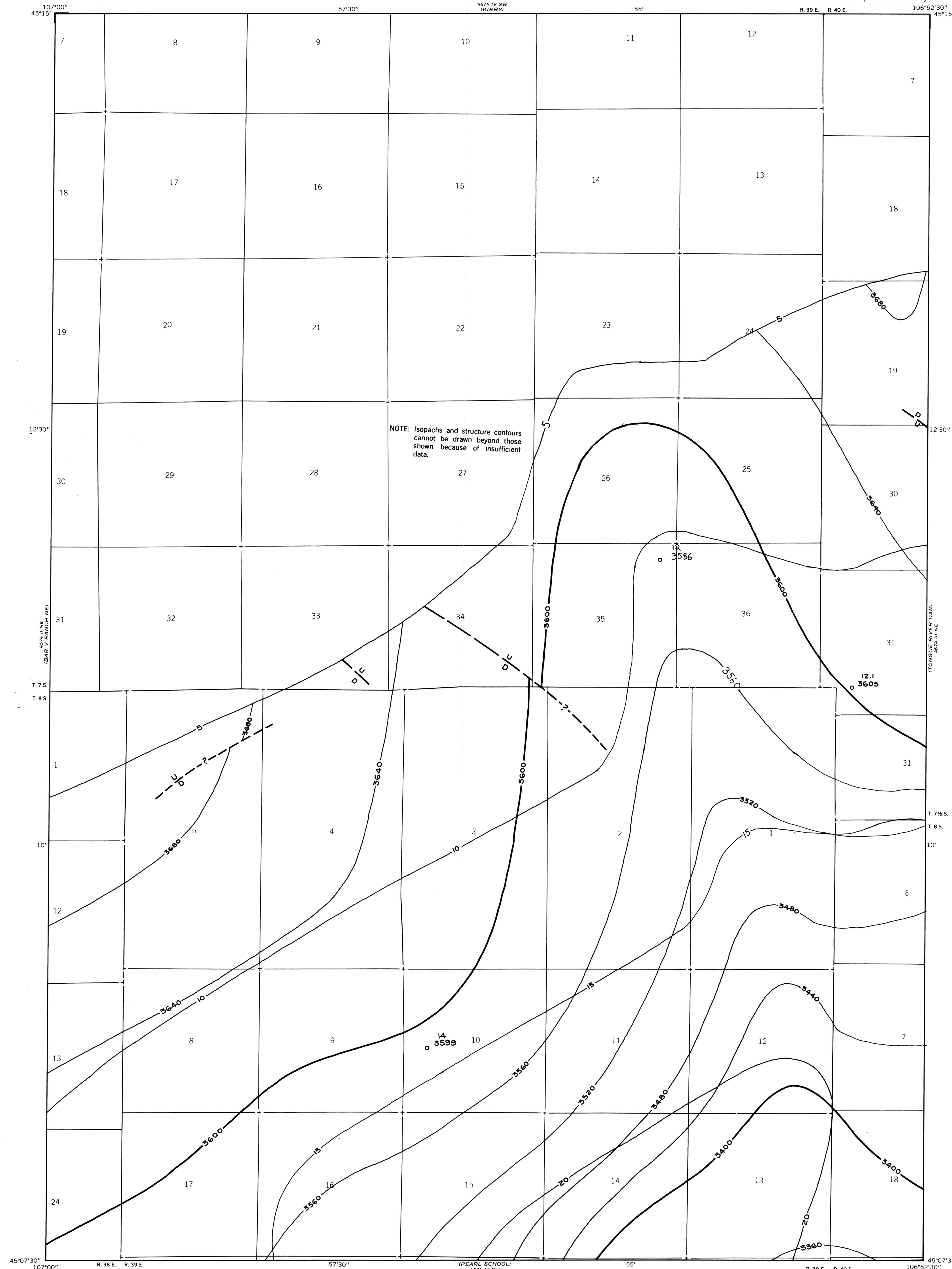


FAULT—Dashed where approximately located. U, up-thrown side; D, downthrown side.



DRILL HOLE—Showing thickness and altitude at the top of the coal bed, in feet.

To convert feet to meters, multiply feet by 0.3048.

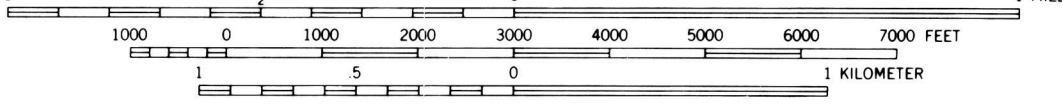
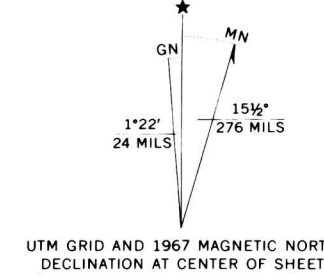


NOTE: Isopachs and structure contours cannot be drawn beyond those shown because of insufficient data.

Base map from U.S. Geological Survey, 1967

PEARL SCHOOLS  
4674 III SW  
SCALE 1:24,000

Compiled in 1977



COAL RESOURCE OCCURRENCE MAP OF THE HALF MOON HILL QUADRANGLE,  
BIG HORN COUNTY, MONTANA

BY  
COLORADO SCHOOL OF MINES RESEARCH INSTITUTE  
1979