

OPEN-FILE REPORT
This report has not been edited for conformity with
U.S. Geological Survey editorial standards or
stratigraphic nomenclature.

EXPLANATION

100
OVERBURDEN ISOPACH—Showing thickness of overburden, in feet, from the surface to the top of the coal bed. Overburden isopachs within the stripping limit are omitted where they are too close to a mining-ratio contour for map readability. Isopach interval 100 feet (30.5 m).

BOUNDARY OF COAL 5 FEET OR MORE THICK—
Drawn along the outcrop of coal bed and/or the inferred contact between burned and unburned coal, and/or the 5-foot coal isopach, and/or the fault boundary of coal. Arrows point toward area of coal 5 feet or more thick.

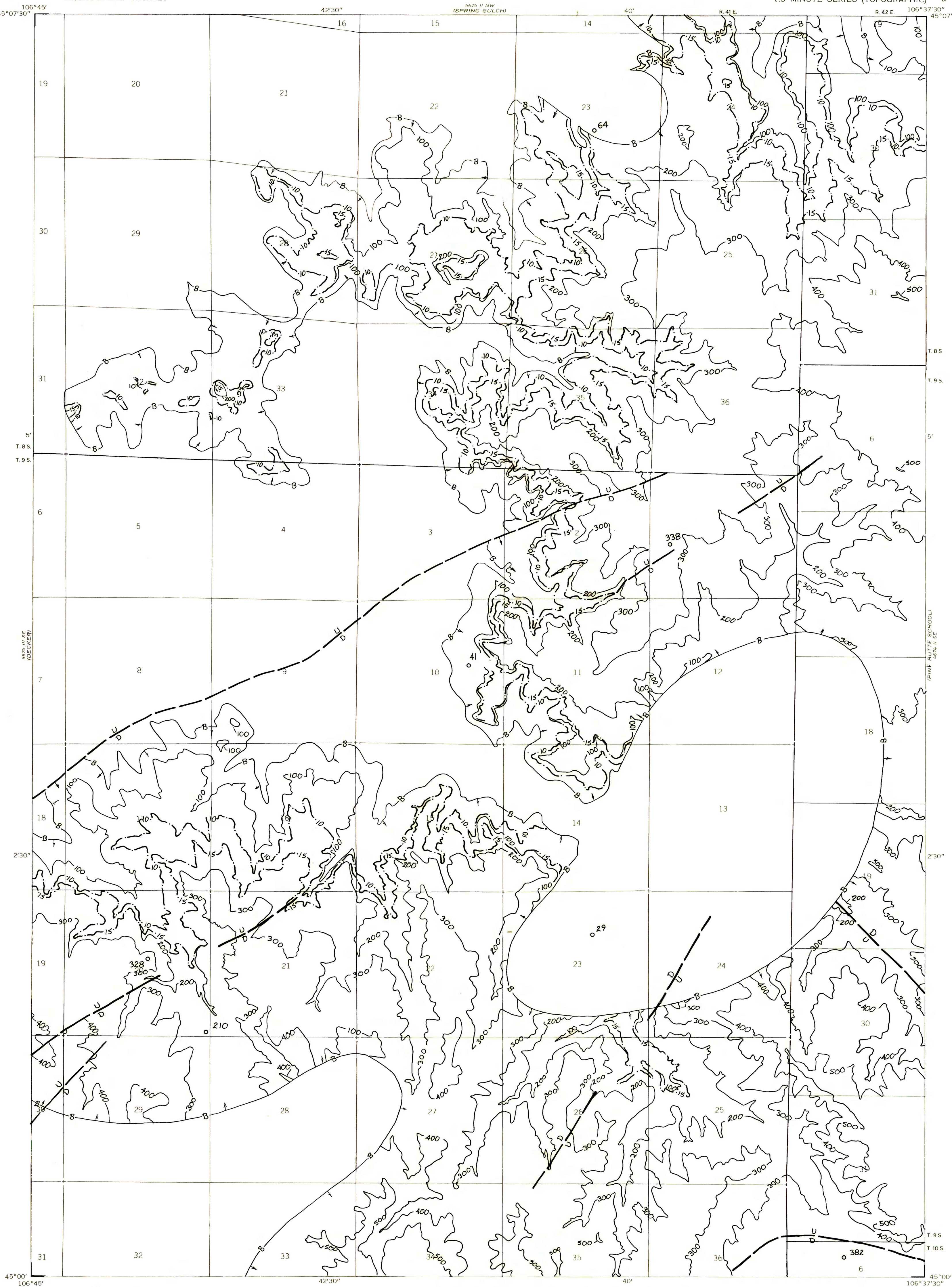
338
DRILL HOLE—Showing thickness of overburden, in feet, from the surface to the top of the coal bed.

U
D
FAULT—Dashed where approximately located. U, up-thrown side; D, downthrown side.

10
MINING-RATIO CONTOUR—Number indicates cubic yards of overburden per ton of recoverable coal by surface-mining methods. Contours shown only in areas suitable for surface mining within the stripping limit.

To convert yds³/ton to m³/metric ton, multiply yds³/ton by 0.842.

To convert feet to meters, multiply feet by 0.3048.



Base map from U.S. Geological Survey, 1958

Compiled in 1977

COAL RESOURCE OCCURRENCE MAP OF THE HOLMES RANCH QUADRANGLE,
BIG HORN COUNTY, MONTANA

BY
COLORADO SCHOOL OF MINES RESEARCH INSTITUTE
1979

PLATE 9
OVERBURDEN ISOPACH AND MINING-RATIO
MAP OF THE SMITH COAL BED