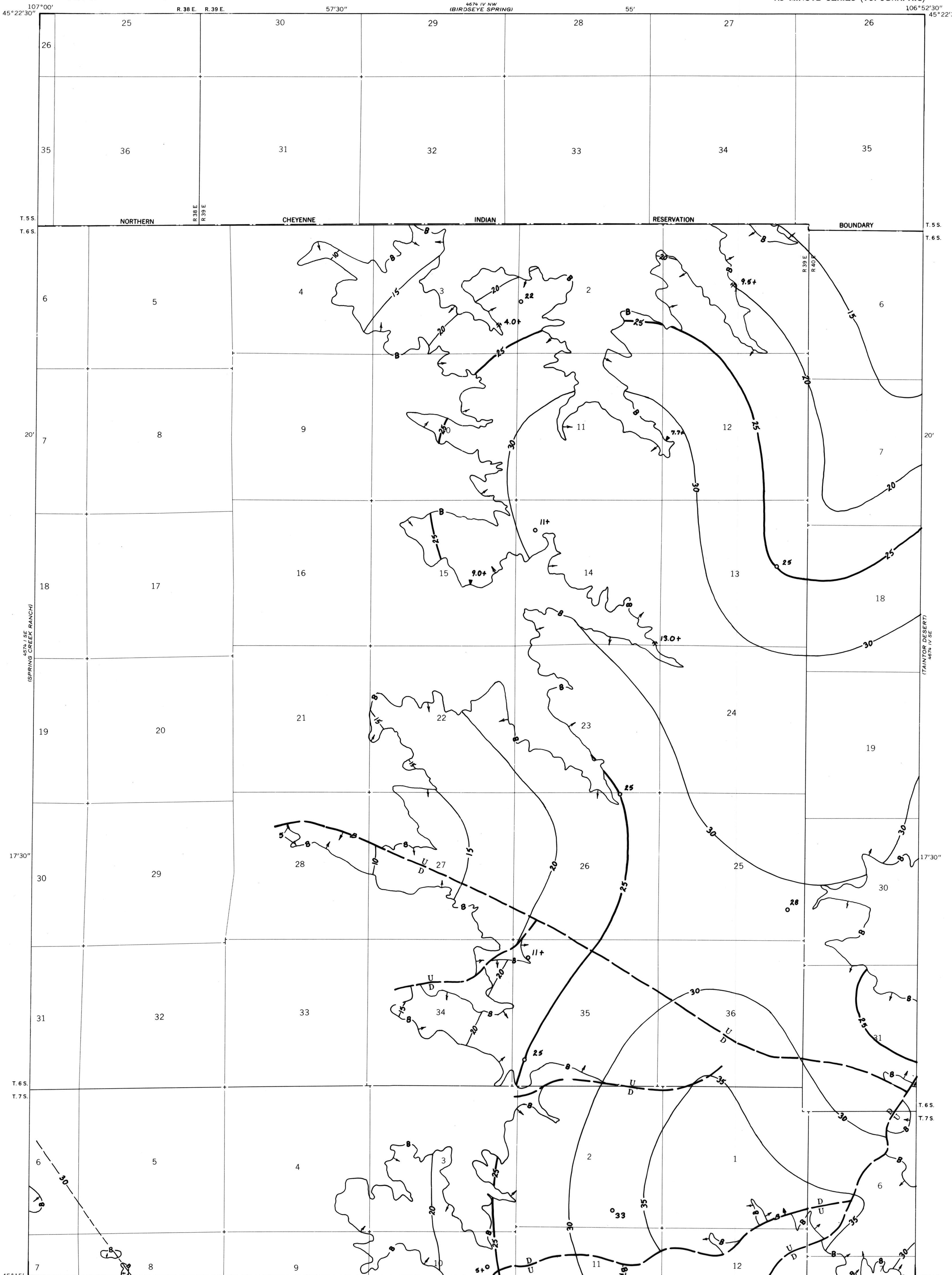


OPEN-FILE REPORT  
This report has not been edited for conformity with  
U.S. Geological Survey editorial standards or  
stratigraphic nomenclature.



EXPLANATION

ISOPACHS OF THE COAL BED—Showing thickness, in feet. Isopach interval 5 feet.

BOUNDARY OF COAL DEPOSIT—Drawn along the outcrop of the coal bed and/or the contact between burned and unburned coal, and/or the fault boundary of the coal (dashed where inferred by present author beyond the limits of original data). Arrows point toward the coal-bearing area. Number at triangle is altitude, in feet, at the top of the coal bed taken from topographic map at a point of coal thickness measurement. Plus (+) sign after number indicates incomplete measurement.

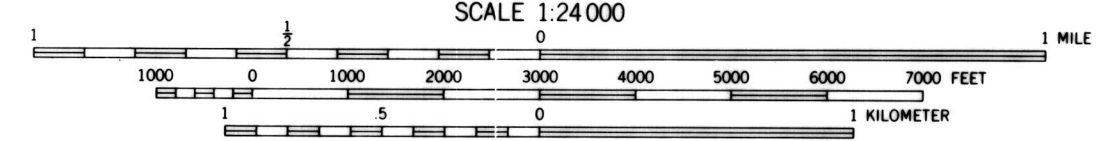
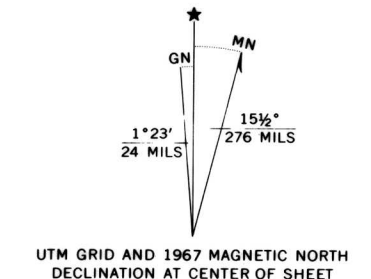
FAULT—Dashed where approximately located. U, up-thrown side; D, downthrown side.

DRILL HOLE—Showing thickness of the coal bed, in feet.

COAL MINE—Showing thickness of the coal bed, in feet.

To convert feet to meters, multiply feet by 0.3048.

Base map from U.S. Geological Survey, 1967



**COAL RESOURCE OCCURRENCE MAP OF THE KIRBY QUADRANGLE,  
BIG HORN COUNTY, MONTANA**  
BY  
**COLORADO SCHOOL OF MINES RESEARCH INSTITUTE  
1979**