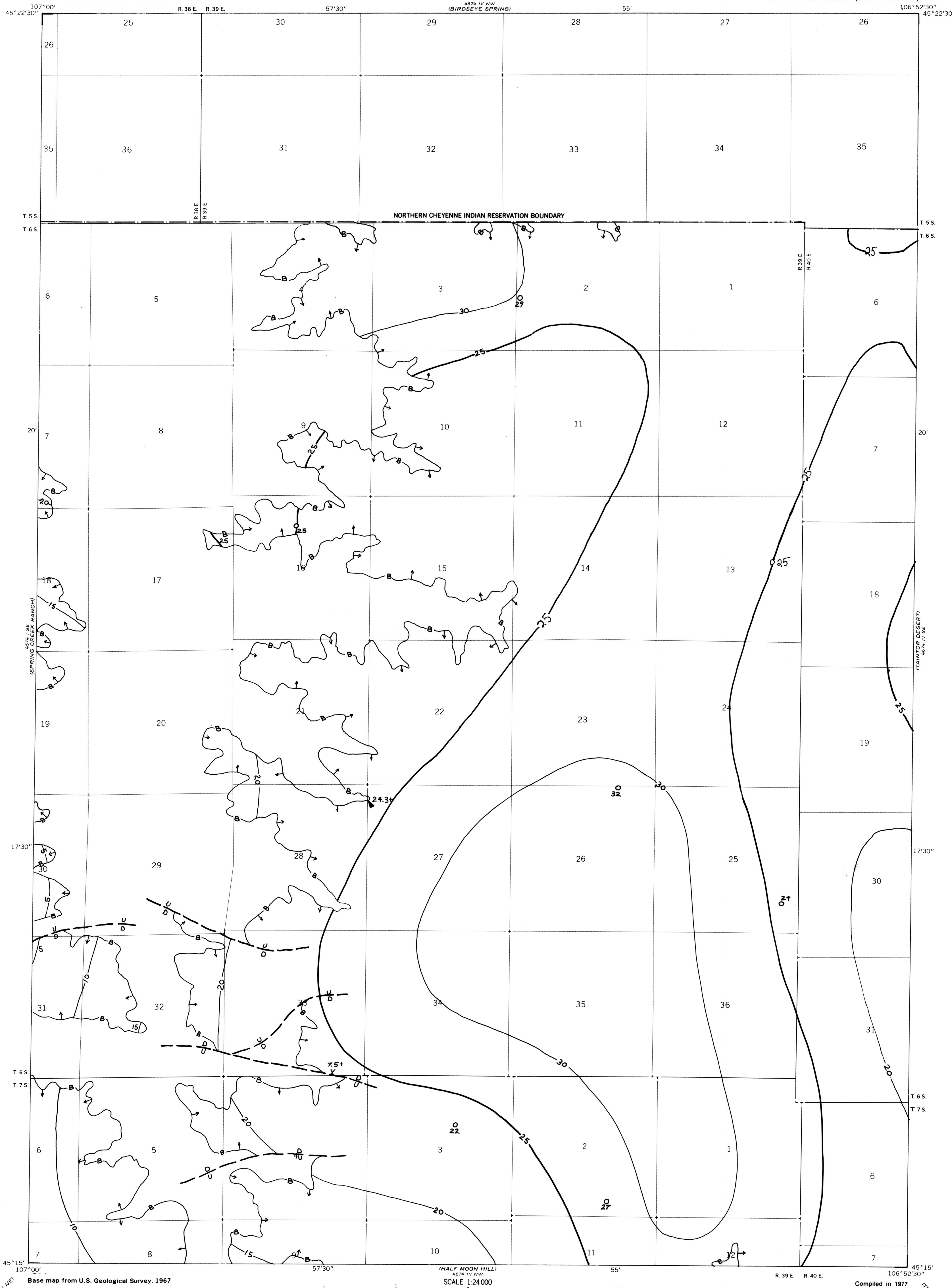


OPEN-FILE REPORT  
This report has not been edited for conformity with  
U.S. Geological Survey editorial standards or  
stratigraphic nomenclature.



EXPLANATION

ISOPACHS OF THE COAL BED—Showing thickness, in feet. Isopach interval 5 feet.

BOUNDARY OF COAL DEPOSIT—Drawn along the outcrop of coal bed and/or the contact between burned and unburned coal, and/or the fault boundary of the coal (dashed where inferred by present author beyond the limits of original data). Arrows point toward coal-bearing area. Numbers at triangle are coal bed thickness and altitude at the top of the coal bed, measured in feet. Plus (+) sign after number indicates incomplete measurement.

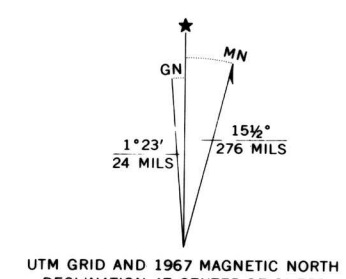
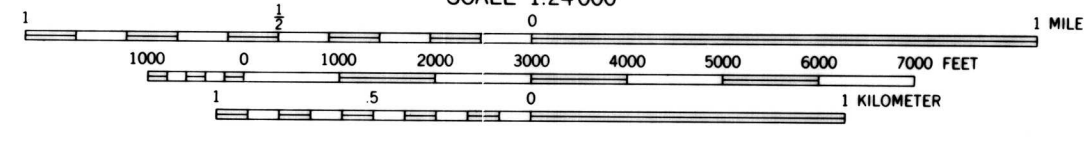
FAULT—Dashed where approximately located. U, up-thrown side; D, downthrown side.

DRILL HOLE—Showing thickness of the coal bed, in feet.

COAL PROSPECT—Showing thickness of the coal bed, in feet.

To convert feet to meters, multiply feet by 0.3048.

Base map from U.S. Geological Survey, 1967



COAL RESOURCE OCCURRENCE MAP OF THE KIRBY QUADRANGLE,  
BIG HORN COUNTY, MONTANA

BY  
COLORADO SCHOOL OF MINES RESEARCH INSTITUTE  
1979

PLATE 14  
ISOPACH MAP OF  
THE CANYON COAL BED