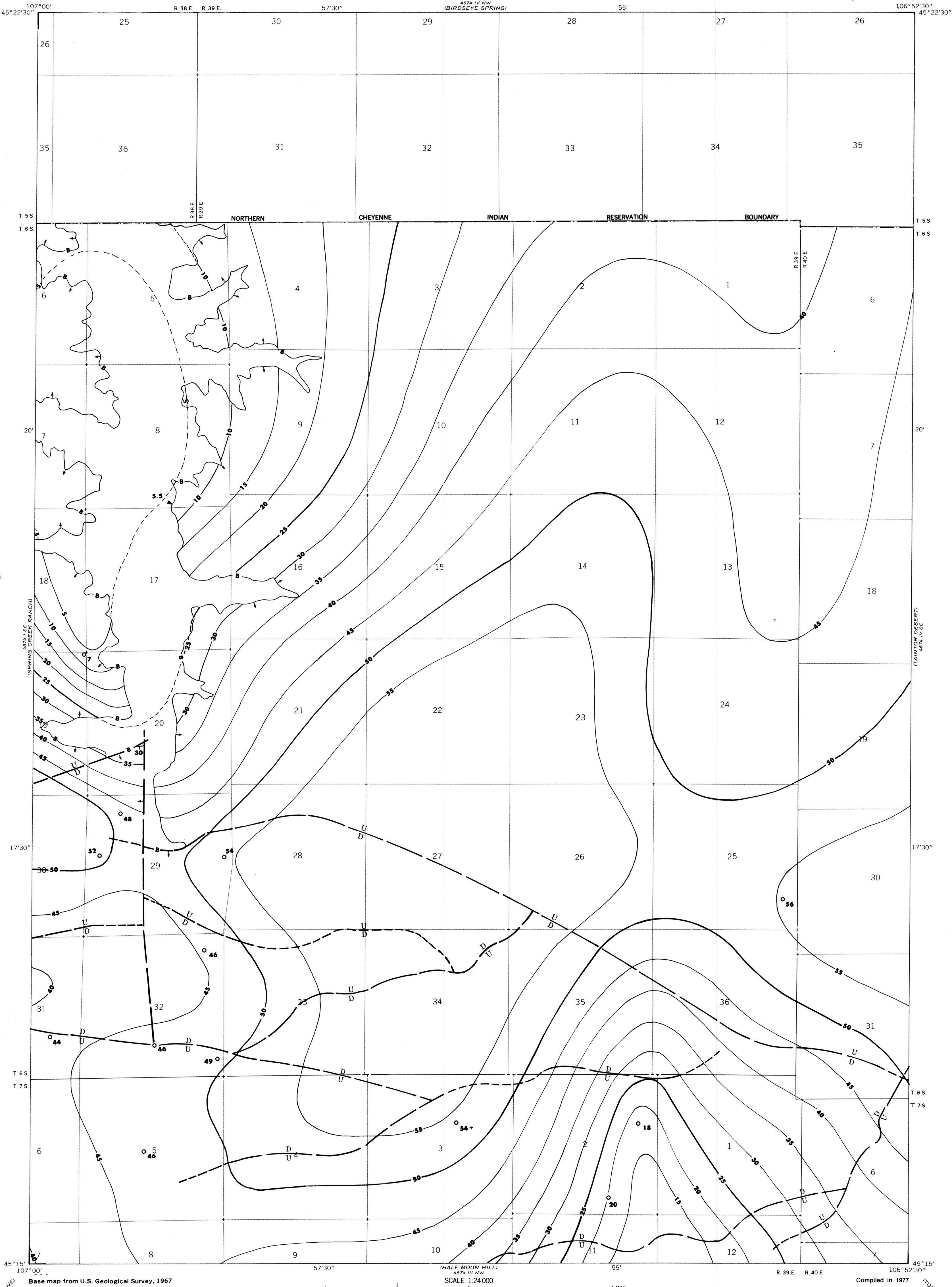


OPEN-FILE REPORT
This report has not been edited for conformity with
U.S. Geological Survey editorial standards or
stratigraphic nomenclature.



EXPLANATION

ISOPACHS OF THE COAL BED—Showing thickness, in feet. Isopach interval 5 feet.

BOUNDARY OF COAL DEPOSIT—Drawn along the outcrop of coal bed and/or the contact between burned and unburned coal, and/or the fault boundary of the coal (dashed where inferred by present author beyond the limits of original data). Arrows point toward coal-bearing area. Numbers at triangle are coal bed thickness, measured in feet.

FAULT—Dashed where approximately located. U, up-thrown side; D, downthrown side.

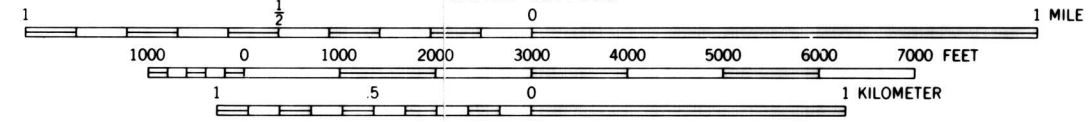
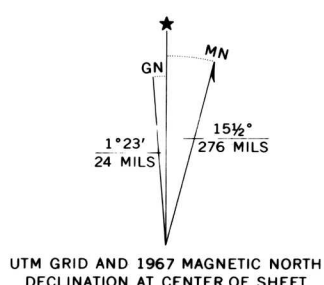
DRILL HOLE—Showing thickness of the coal bed, in feet. Plus (+) sign after number indicates incomplete measurement.

To convert feet to meters, multiply feet by 0.3048.

Base map from U.S. Geological Survey, 1967

SCALE 1:24 000

Compiled in 1977



COAL RESOURCE OCCURRENCE MAP OF THE KIRBY QUADRANGLE,
BIG HORN COUNTY, MONTANA
BY
COLORADO SCHOOL OF MINES RESEARCH INSTITUTE
1979