

THOMAS CREEK
45°22'30"
107°00'

UNITED STATES
DEPARTMENT OF THE INTERIOR
GEOLOGICAL SURVEY

KIRBY QUADRANGLE
MONTANA—BIG HORN CO.
7.5 MINUTE SERIES (TOPOGRAPHIC)

OPEN FILE REPORT 79-650
PLATE 27 OF 28

OPEN-FILE REPORT
This report has not been edited for conformity with
U.S. Geological Survey editorial standards or
stratigraphic nomenclature.



EXPLANATION

500
OVERBURDEN ISOPACH—Showing thickness of overburden, in feet, from the surface to the top of the coal bed. Isopach interval 200 feet (61 m).

B
BOUNDARY OF COAL 5 FEET OR MORE THICK—Drawn along the outcrop of coal bed and/or the inferred contact between burned and unburned coal and/or the 5-foot coal isopach. Arrows point toward area of coal 5 feet or more thick.

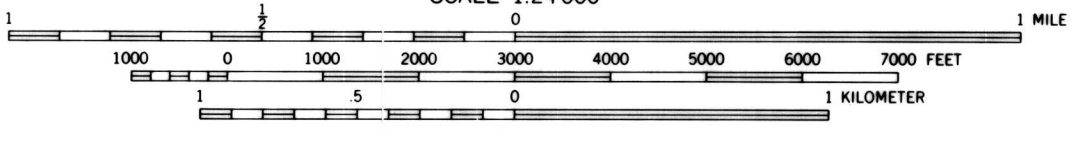
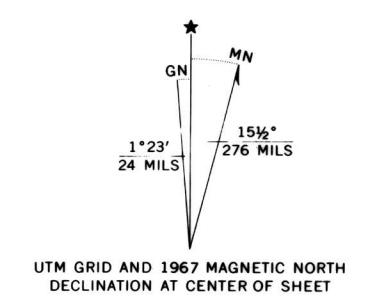
To convert yds³/ton to m³/metric ton, multiply yds³/ton by 0.842.

To convert feet to meters, multiply feet by 0.3048.

NOTE: All mining-ratio contours falling within the stripping limit for this coal bed in this quadrangle have values greater than 15 and therefore are not shown.

Base map from U.S. Geological Survey, 1967

Compiled in 1977



COAL RESOURCE OCCURRENCE MAP OF THE KIRBY QUADRANGLE,
BIG HORN COUNTY, MONTANA

BY
COLORADO SCHOOL OF MINES RESEARCH INSTITUTE
1979

PLATE 26
OVERBURDEN ISOPACH AND MINING-RATIO
MAP OF THE KING COAL BED