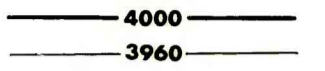
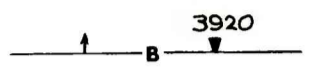


OPEN-FILE REPORT  
This report has not been edited for conformity with  
U.S. Geological Survey editorial standards or  
stratigraphic nomenclature.

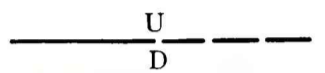
EXPLANATION



STRUCTURE CONTOURS—Drawn on the top of the coal bed. Dashed where projected beyond boundary of coal. Hachures indicate a closed depression. Contour interval 40 feet (12.2 m). Datum is mean sea level.



BOUNDARY OF COAL DEPOSIT—Drawn along the outcrop of the coal bed and/or the contact between burned and unburned coal (dashed where inferred by present author beyond the limits of original data). Arrows point toward coal-bearing area. Number at triangle is altitude, in feet, at the top of the coal bed taken from topographic map at a point of coal thickness measurement.



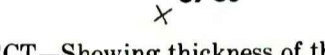
FAULT—Dashed where approximately located. U, upthrown side; D, downthrown side.



COAL PROSPECT—Showing altitude at the top of the coal bed, in feet.

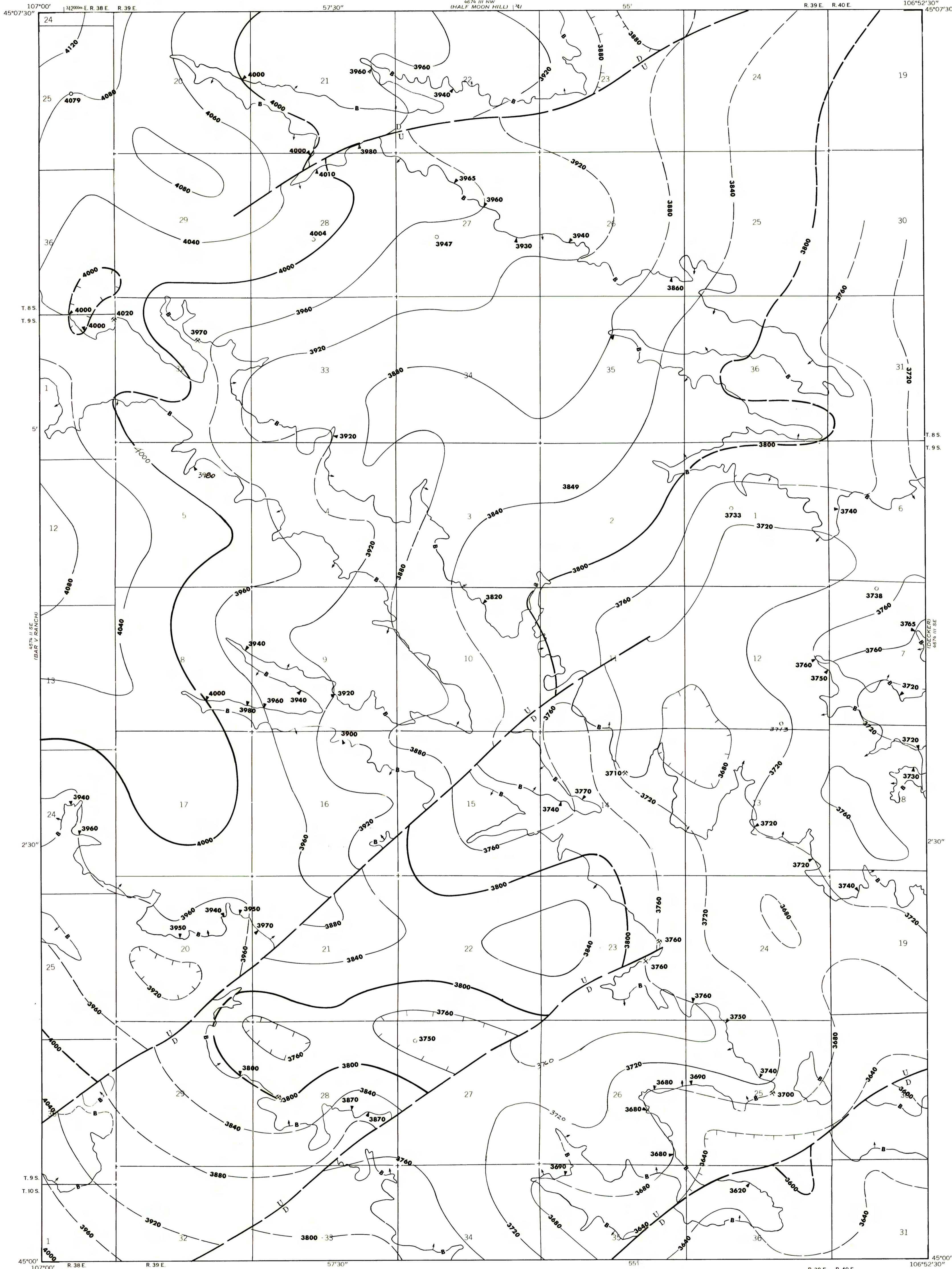


COAL MINE—Showing altitude at the top of the coal bed, in feet.

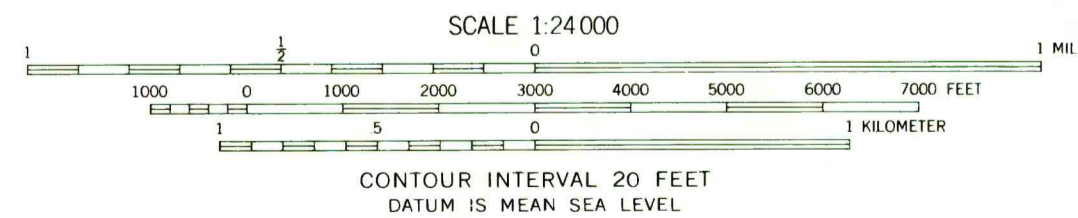
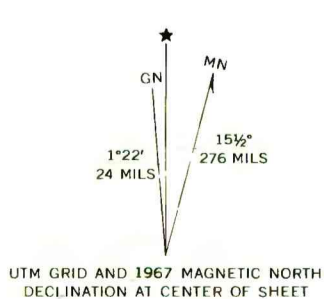


COAL PROSPECT—Showing thickness of the coal bed, in feet.

To convert feet to meters, multiply feet by 0.3048.



Base map from U.S. Geological Survey, 1967



Compiled in 1977

**COAL RESOURCE OCCURRENCE MAP OF THE PEARL SCHOOL  
QUADRANGLE, BIG HORN COUNTY, MONTANA  
BY  
COLORADO SCHOOL OF MINES RESEARCH INSTITUTE  
1979**