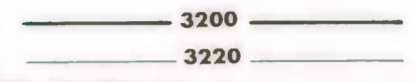


OPEN-FILE REPORT
This report has not been edited for conformity with
U.S. Geological Survey editorial standards or
stratigraphic nomenclature.

EXPLANATION

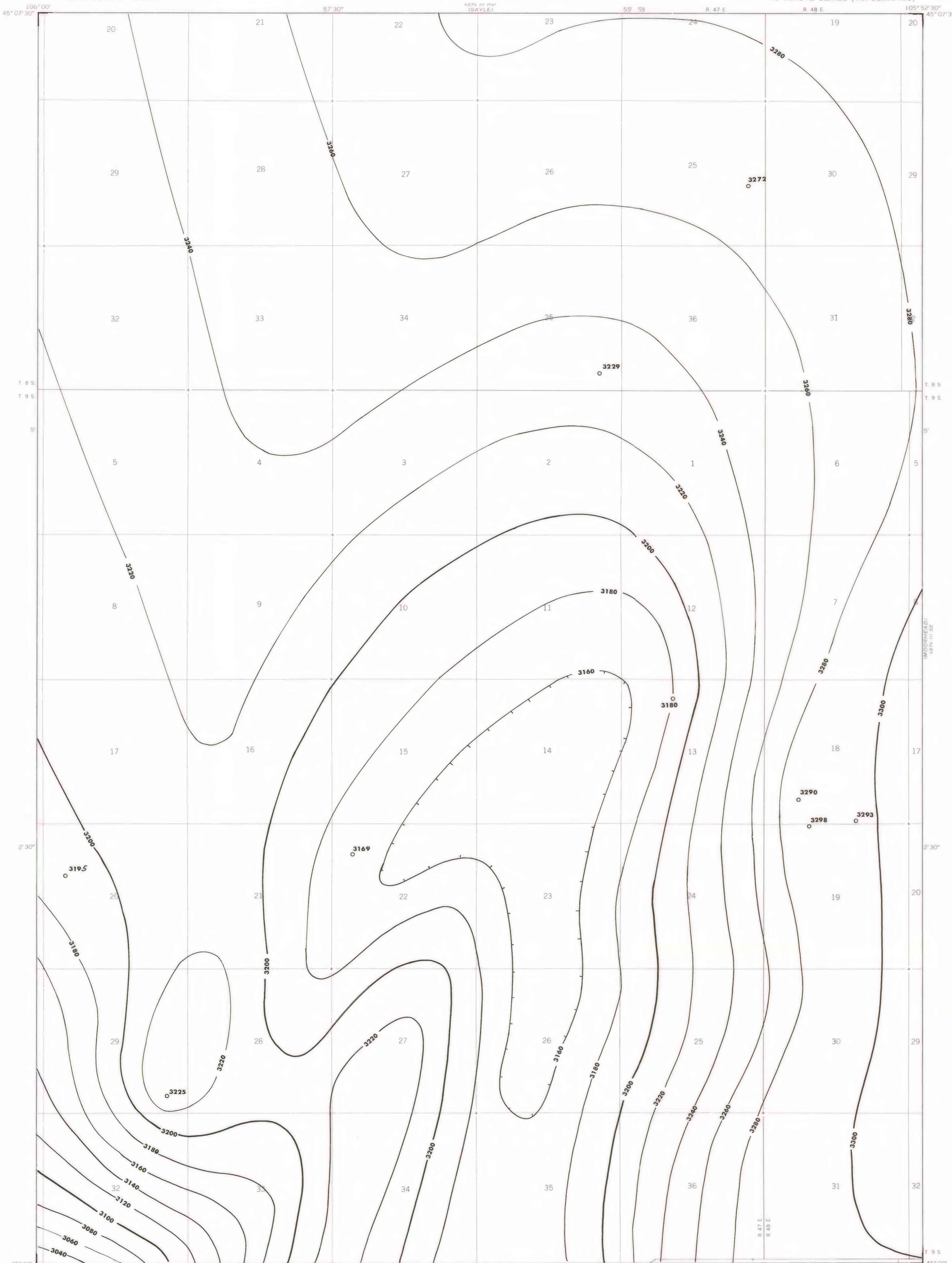


STRUCTURE CONTOURS—Drawn on the top of the coal
bed. Dashed where projected beyond boundary of coal.
Contour interval 20 feet (6.1 m). Datum is mean sea
level.

○ 3290

DRILL HOLE—Showing altitude at the top of the coal bed,
in feet.

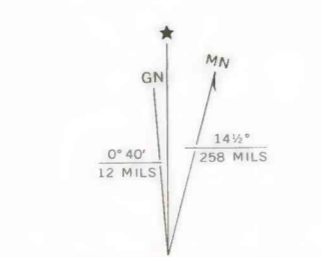
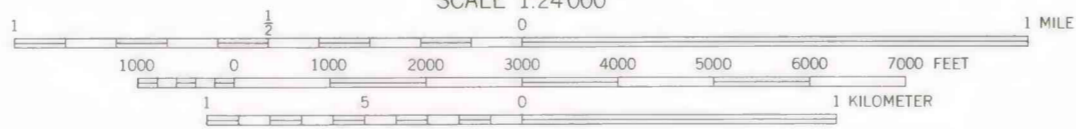
To convert feet to meters, multiply feet by 0.3048.



Base map from U.S. Geological Survey, 1970

(BLACK DRAW)
SCALE 1:24 000

Compiled in 1977



**COAL RESOURCE OCCURRENCE MAP OF THE BRADSHAW CREEK QUADRANGLE,
POWDER RIVER COUNTY, MONTANA AND CAMPBELL COUNTY, WYOMING**
BY
COLORADO SCHOOL OF MINES RESEARCH INSTITUTE
1979