
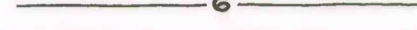

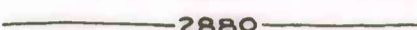
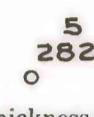
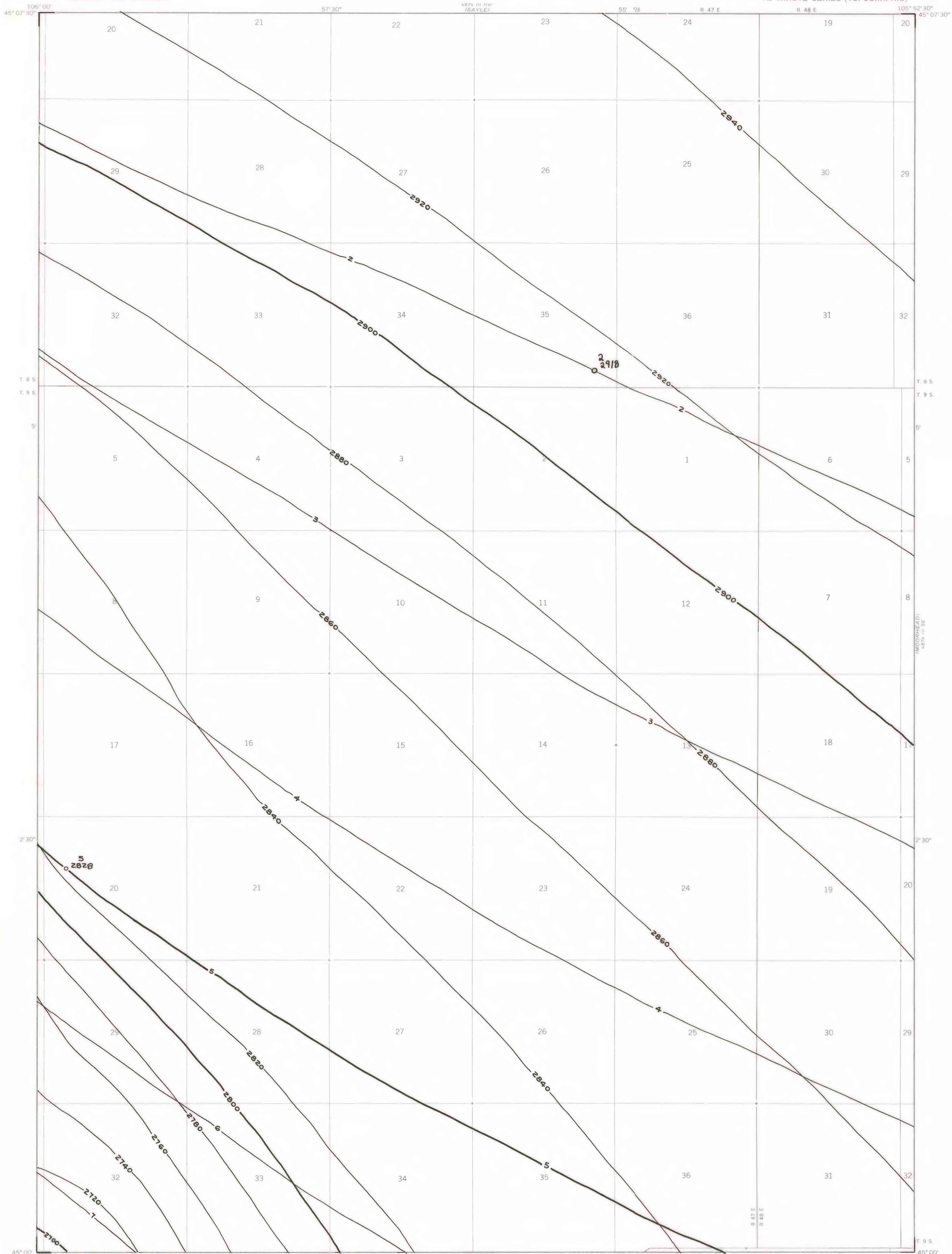


OPEN-FILE REPORT  
This report has not been edited for conformity with  
U.S. Geological Survey editorial standards or  
stratigraphic nomenclature.

EXPLANATION

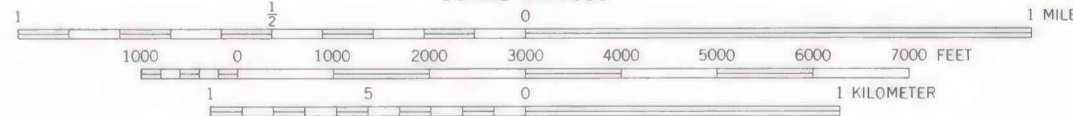
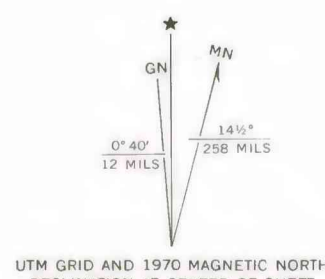
-  5
-  6
- ISOPACHS OF THE COAL BED—Showing thickness, in feet. Isopach interval 1 foot.
-  2900
-  2800
- STRUCTURE CONTOURS—Drawn on the top of the coal bed. Contour interval 20 feet (6.1 m). Datum is mean sea level.
-  5  
2820
- DRILL HOLE—Showing thickness and altitude at the top of the coal bed, in feet.
- To convert feet to meters, multiply feet by 0.3048.



Base map from U.S. Geological Survey, 1970

SCALE 1:24,000

Compiled in 1977



COAL RESOURCE OCCURRENCE MAP OF THE BRADSHAW CREEK QUADRANGLE,  
POWDER RIVER COUNTY, MONTANA AND CAMPBELL COUNTY, WYOMING  
BY  
COLORADO SCHOOL OF MINES RESEARCH INSTITUTE  
1979