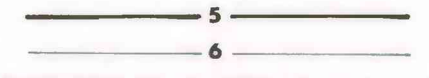


OPEN-FILE REPORT  
This report has not been edited for conformity with  
U.S. Geological Survey editorial standards or  
stratigraphic nomenclature.

EXPLANATION



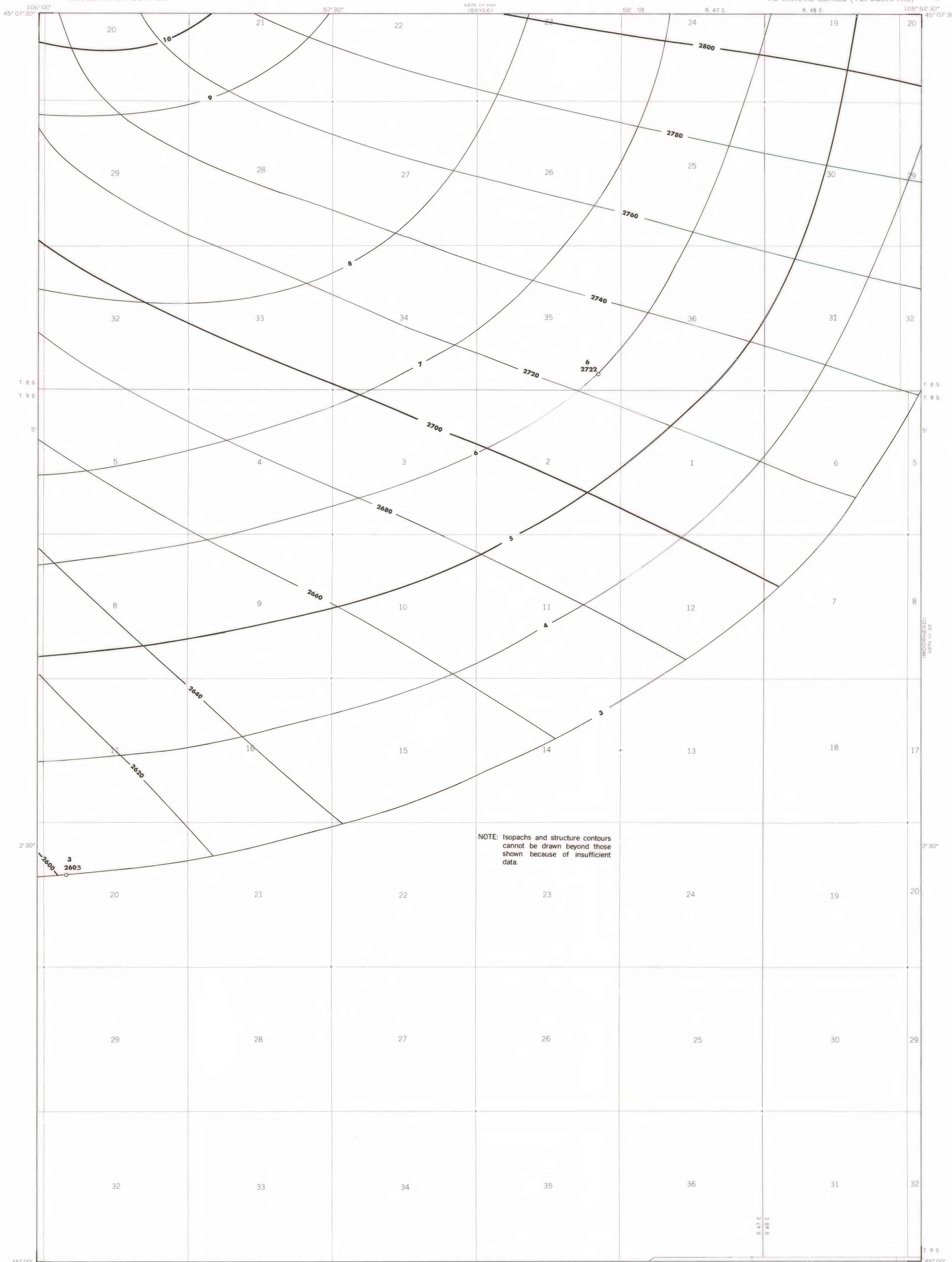
ISOPACHS OF THE COAL BED—Showing thickness, in feet. Isopach interval 1 foot.

STRUCTURE CONTOURS—Drawn on the top of the coal bed. Contour interval 20 feet (6.1 m). Datum is mean sea level.

5  
2601

DRILL HOLE—Showing thickness and altitude at the top of the coal bed, in feet.

To convert feet to meters, multiply feet by 0.3048.

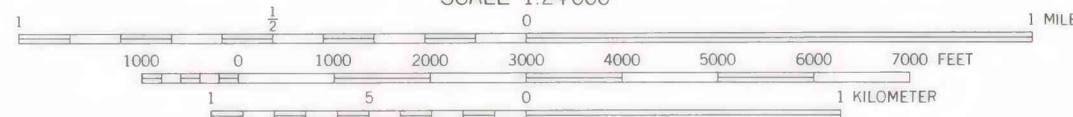
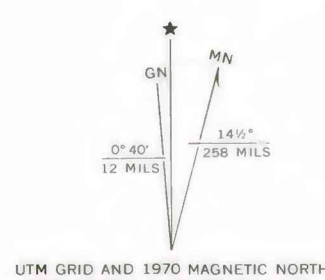


NOTE: Isopachs and structure contours cannot be drawn beyond these shown because of insufficient data.

Base map from U.S. Geological Survey, 1970

(BLACK DRAW)  
SCALE 1:24,000

Compiled in 1977



COAL RESOURCE OCCURRENCE MAP OF THE BRADSHAW CREEK QUADRANGLE,  
POWDER RIVER COUNTY, MONTANA AND CAMPBELL COUNTY, WYOMING  
BY  
COLORADO SCHOOL OF MINES RESEARCH INSTITUTE  
1979