

MOOSEHEAD
48° 15' N
105° 45' W

UNITED STATES
DEPARTMENT OF THE INTERIOR
GEOLOGICAL SURVEY

HUCKINS SCHOOL QUADRANGLE
MONTANA—POWDER RIVER CO.
7.5 MINUTE SERIES (TOPOGRAPHIC)

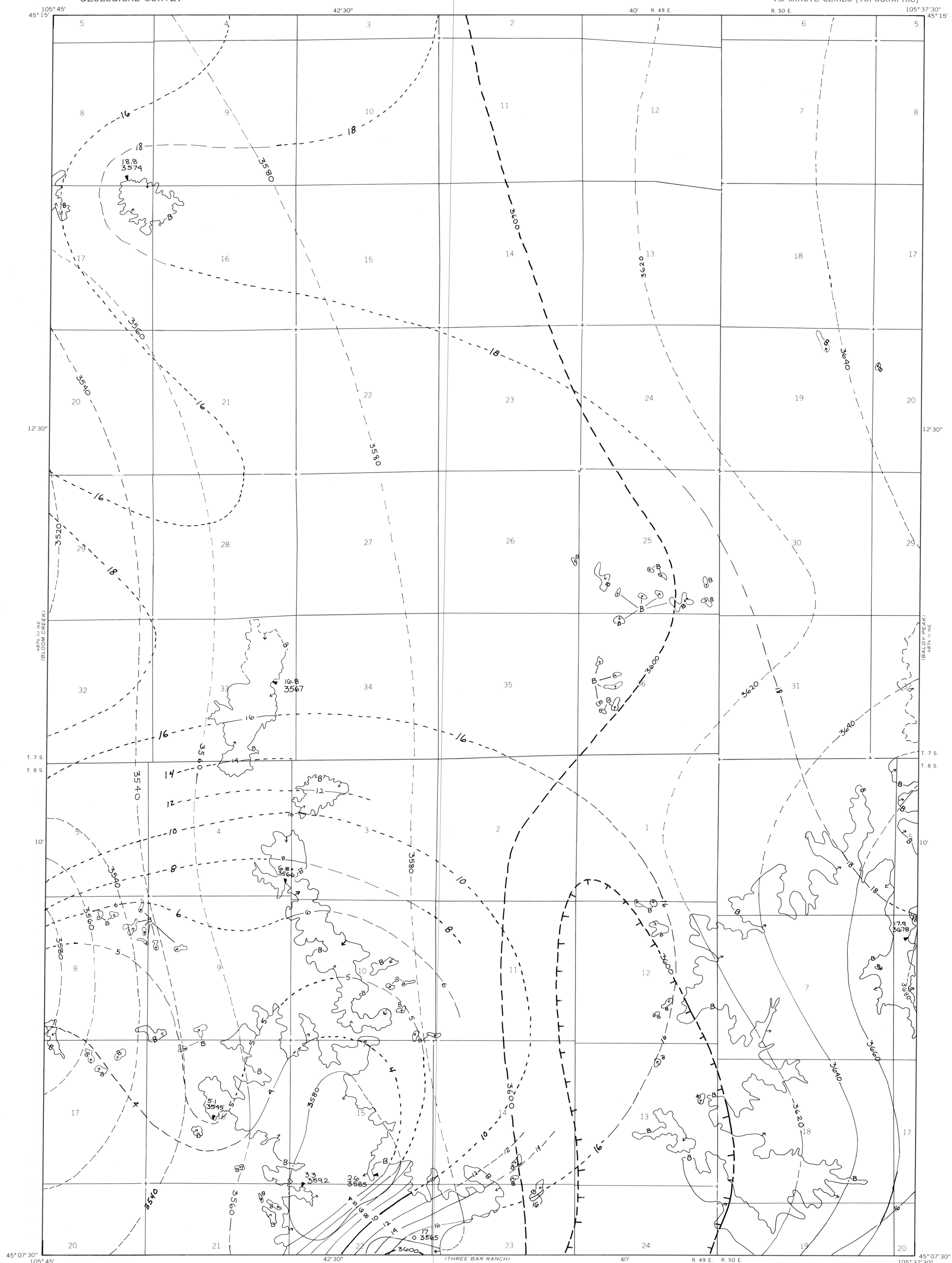
OPEN FILE REPORT 79-786
PLATE 10 OF 41

OPEN-FILE REPORT
This report has not been edited for conformity with
U.S. Geological Survey editorial standards or
stratigraphic nomenclature.

EXPLANATION

- ISOPACHS OF THE COAL BED—Showing thickness, in feet. Dashed where projected beyond boundary of coal. Isopach interval 2 feet, with an intermediate 5-foot isopach.
- STRUCTURE CONTOURS—Drawn on the top of the coal bed. Dashed where projected beyond boundary of coal. Hachures indicate a closed depression. Contour interval 20 feet (6.1 m). Datum is mean sea level.
- BOUNDARY OF COAL DEPOSIT—Drawn along the outcrop of coal bed and/or the contact between burned and unburned coal (dashed where inferred by present author beyond the limits of original data). Arrows point toward coal-bearing area. Numbers at triangle are coal bed thickness and altitude at the top of the coal bed, measured in feet. Plus (+) sign after number indicates incomplete measurement.
- DRILL HOLE—Showing thickness and altitude at the top of the coal bed, in feet.

To convert feet to meters, multiply feet by 0.3048.



Base map from U.S. Geological Survey, 1970

Scale 1:24,000

UTM GRID AND 1970 MAGNETIC NORTH DECLINATION AT CENTER OF SHEET

QUADRANGLE LOCATION

Compiled in 1977

**COAL RESOURCE OCCURRENCE MAP OF THE HUCKINS SCHOOL QUADRANGLE,
POWDER RIVER COUNTY, MONTANA
BY
COLORADO SCHOOL OF MINES RESEARCH INSTITUTE
1979**