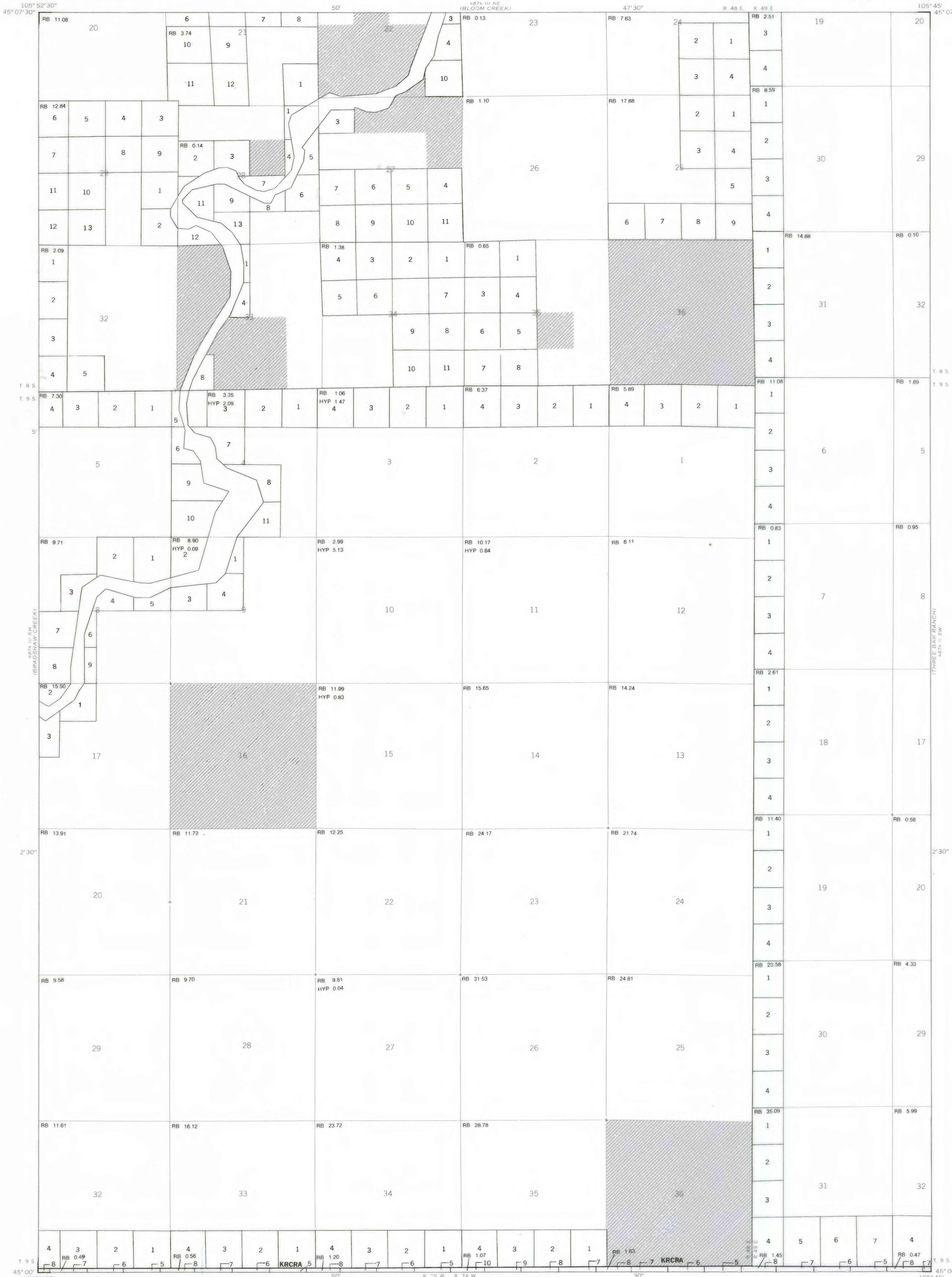


OPEN FILE REPORT
This report has not been edited for conformity with
U.S. Geological Survey editorial standards or
stratigraphic nomenclature.



EXPLANATION

KRCRA

BOUNDARY OF KNOWN RECOVERABLE COAL RESOURCE AREA (KRCRA)—Area of KRCRA indicated by label.

NON-FEDERAL COAL LAND—Land for which the Federal Government does not own the coal rights.

TOTAL RESERVE BASE (RB) AND HYPOTHETICAL RESOURCES (HYP) OF COAL PER SECTION—In millions of short tons, calculated for each section of Federal land following the guidelines given in U.S. Geol. Survey Bull. 1450-B (1976). To convert short tons to metric tons, multiply short tons by 0.9072.

4	3	2	1
5	6		
6	6		
7	6		

SECTION OF LAND—Showing lots and lot numbers.

NOTE: BLM coal plat data indicating areas of coal ownership current as of August 9, 1977.

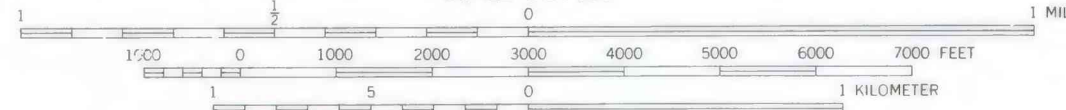
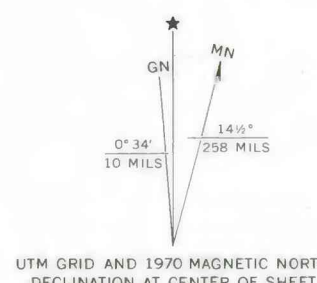
REFERENCE

U.S. Bureau of Mines and U.S. Geological Survey, 1976, Coal resource classification system of the U.S. Bureau of Mines and U.S. Geological Survey: U.S. Geol. Survey Bull. 1450-B, 7 p.

Base map from U.S. Geological Survey, 1970

SCALE 1:24,000

Compiled in 1977



COAL RESOURCE OCCURRENCE MAP OF THE MOORHEAD QUADRANGLE,
POWDER RIVER COUNTY, MONTANA, AND CAMPBELL COUNTY, WYOMING

BY
COLORADO SCHOOL OF MINES RESEARCH INSTITUTE
1979

PLATE 2
BOUNDARY AND COAL
DATA MAP