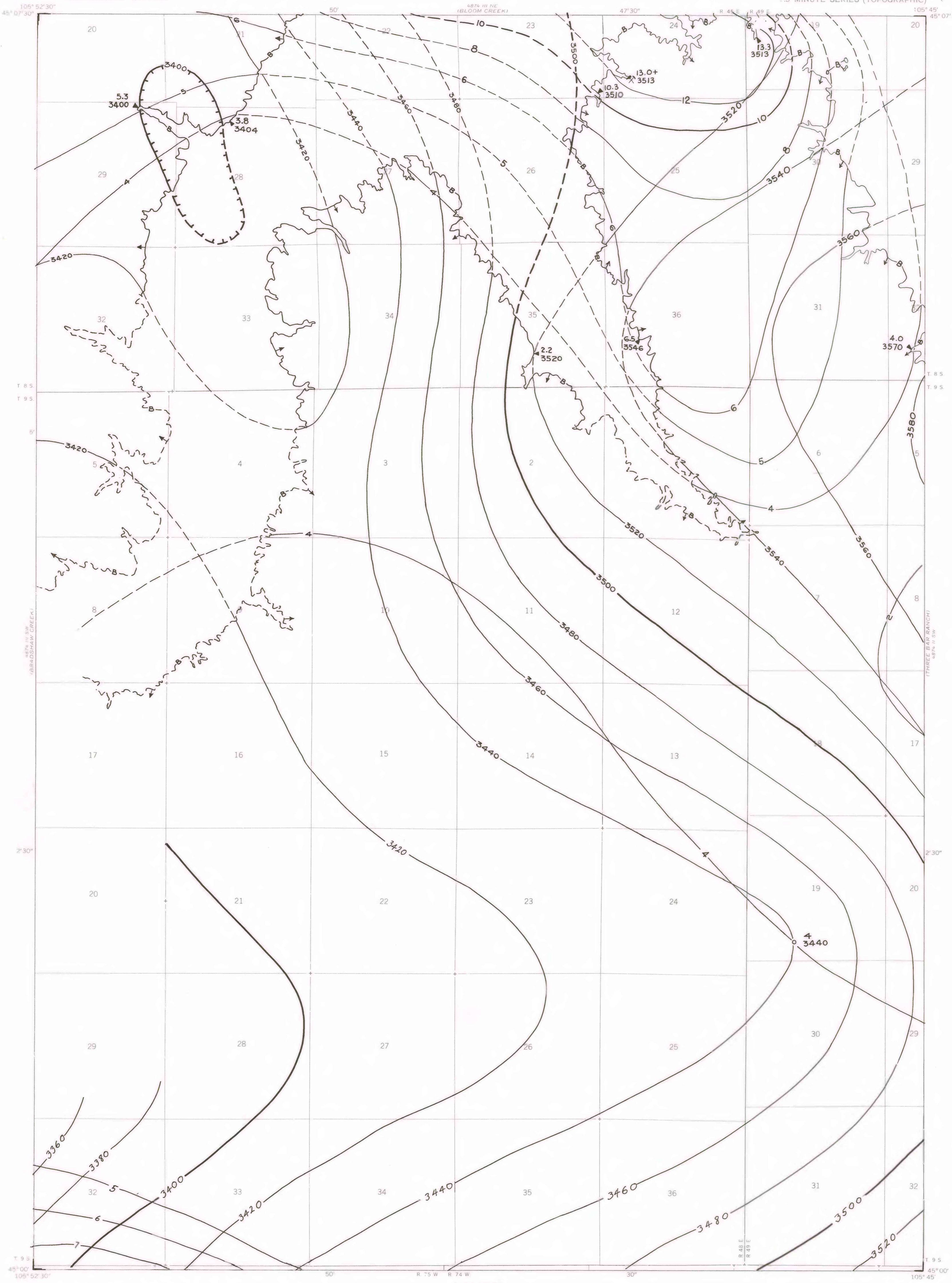



OPEN-FILE REPORT  
This report has not been edited for conformity with  
U.S. Geological Survey editorial standards or  
stratigraphic nomenclature.

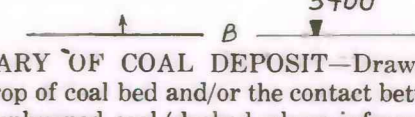


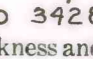
**EXPLANATION**

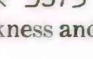
— 10 —  
— 5 —  
**ISOPACHS OF THE COAL BED**—Showing thickness, in feet. Isopach interval 2 feet, with an intermediate 5-foot isopach.

— 3500 —  
— 3480 —

  
**STRUCTURE CONTOURS**—Drawn on the top of the coal bed. Dashed where projected beyond boundary of coal. Hachures indicate a closed depression. Contour interval 20 feet (6.1 m). Datum is mean sea level.

  
**BOUNDARY OF COAL DEPOSIT**—Drawn along the outcrop of coal bed and/or the contact between burned and unburned coal (dashed where inferred by present author beyond the limits of original data). Arrows point toward coal-bearing area. Numbers at triangle are coal bed thickness and altitude at the top of the coal bed, measured in feet. Plus (+) sign after number indicates incomplete measurement.

  
**DRILL HOLE**—Showing thickness and altitude at the top of the coal bed, in feet.

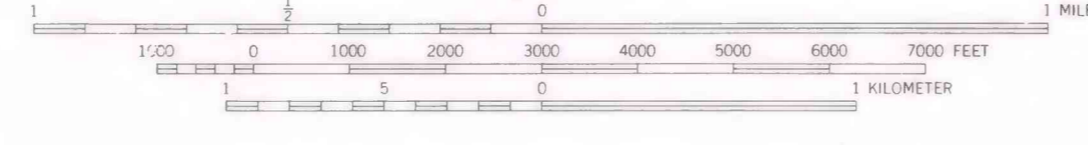
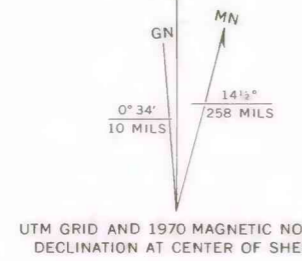
  
**COAL MINE**—Showing thickness and altitude at the top of the coal bed, in feet.

To convert feet to meters, multiply feet by 0.3048.

Base map from U.S. Geological Survey, 1970

SCALE 1:24,000

Compiled in 1977



**COAL RESOURCE OCCURRENCE MAP OF THE MOORHEAD QUADRANGLE,  
POWDER RIVER COUNTY, MONTANA, AND CAMPBELL COUNTY, WYOMING  
BY  
COLORADO SCHOOL OF MINES RESEARCH INSTITUTE  
1979**