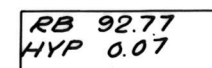


OPEN-FILE REPORT
This report has not been edited for conformity with
U.S. Geological Survey editorial standards or
stratigraphic nomenclature.

EXPLANATION

 NON-FEDERAL COAL LAND WITHIN THE KRCRA—
Land for which the Federal Government does not own the
coal rights.

 RB 9277
HYP 0.07

TOTAL RESERVE BASE (RB) AND HYPOTHETICAL
RESOURCES (HYP) OF COAL PER SECTION—In
millions of short tons, calculated for each section of
Federal land following the guidelines given in U.S.
Geol. Survey Bull. 1450-B (1976). To convert short tons
to metric tons, multiply short tons by 0.9072.

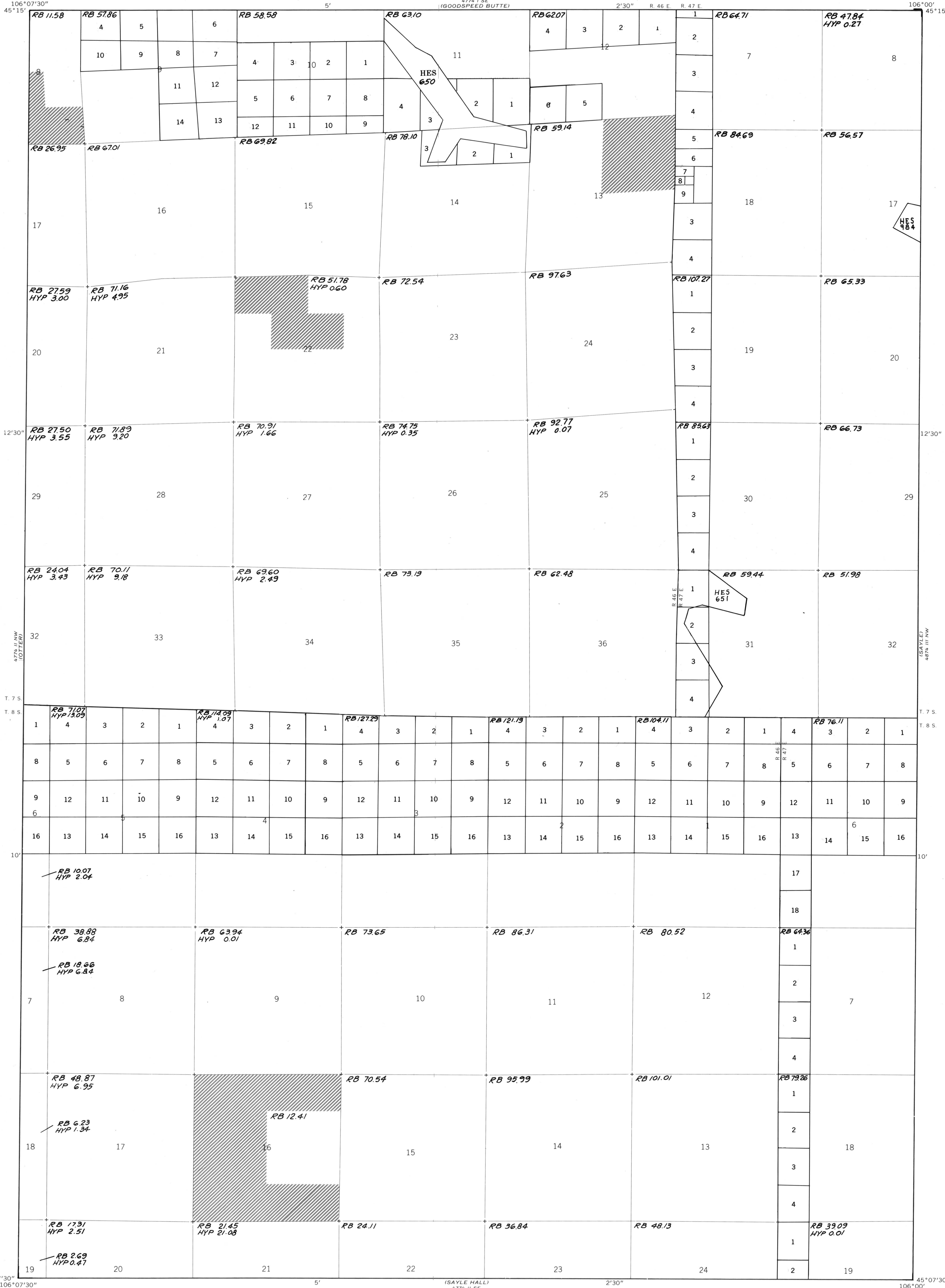
4	3	2	1
5	6		
6	6		
7	6		

SECTION OF LAND—Showing lots and lot numbers.
Boundaries of Homestead Entry Survey (HES) tracts
and their numbers are shown where appropriate.

NOTE: BLM coal plat data indicating areas of coal
ownership current as of August 9, 1977. This entire
quadrangle lies within the Known Recoverable Coal
Resource Area (KRCRA).

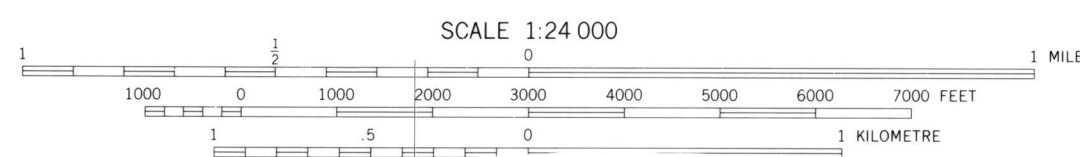
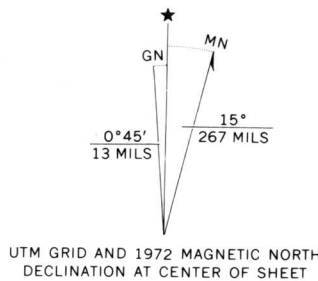
REFERENCE

U.S. Bureau of Mines and U.S. Geological Survey, 1976.
Coal resource classification system of the U.S. Bureau
of Mines and U.S. Geological Survey: U.S. Geol. Survey
Bull. 1450-B, 7 p.



Base map from U.S. Geological Survey, 1972

Compiled in 1977



COAL RESOURCE OCCURRENCE MAP OF THE REANUS CONE QUADRANGLE,
POWDER RIVER COUNTY, MONTANA

BY
COLORADO SCHOOL OF MINES RESEARCH INSTITUTE
1979

PLATE 2
BOUNDARY AND COAL
DATA MAP