

OPEN-FILE REPORT
This report has not been edited for conformity with
U.S. Geological Survey editorial standards or
stratigraphic nomenclature.

EXPLANATION

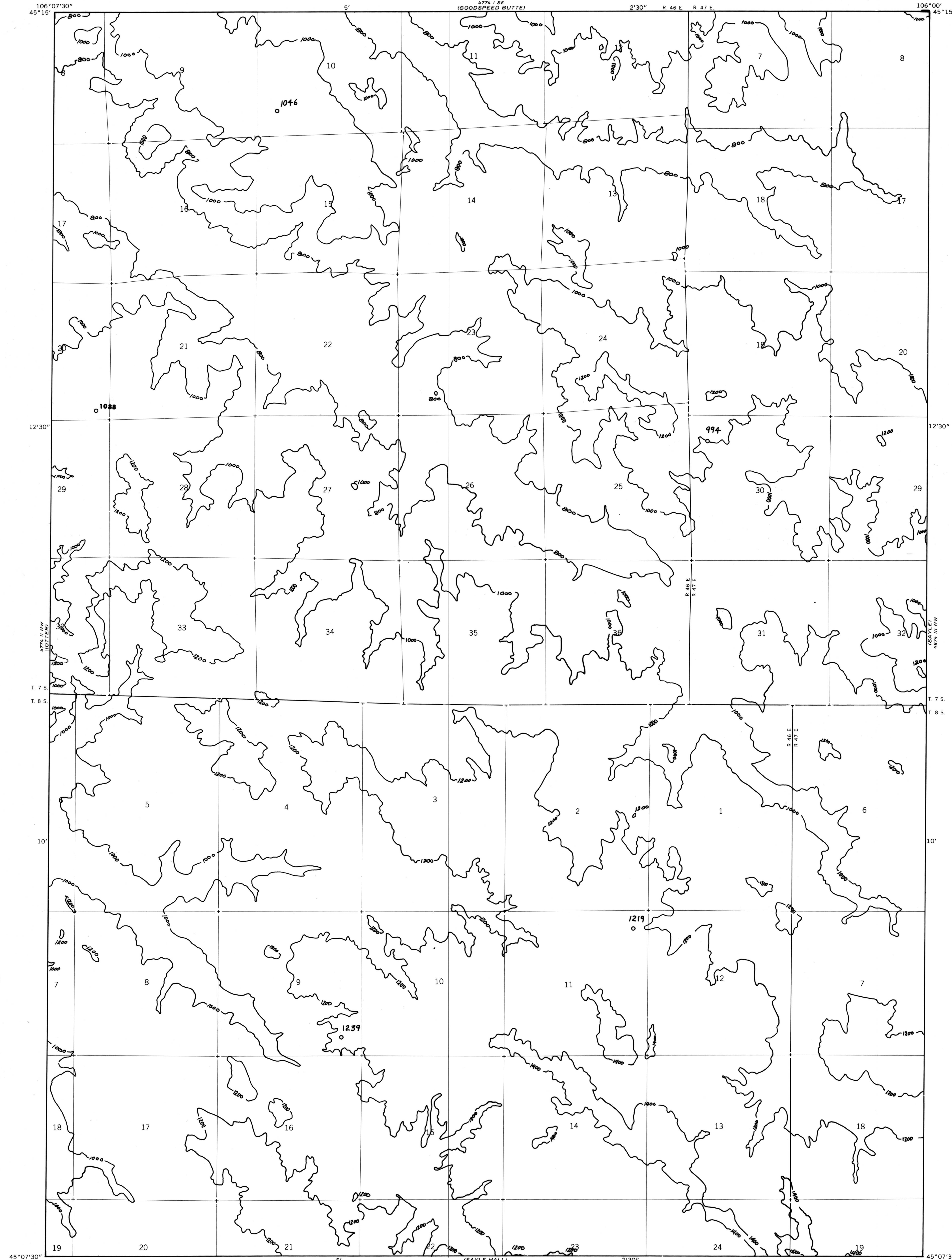
— 800 —
OVERBURDEN ISOPACH—Showing thickness of overburden, in feet, from the surface to the top of the coal bed. Isopach interval 200 feet (61 m).

○ 1046
DRILL HOLE—Showing thickness of overburden, in feet, from the surface to the top of the coal bed.

NOTE: No mining-ratio contours are shown on this map because in this quadrangle all of the coal 5 feet (1.5 m) or more thick in this bed is found below the stripping-limit.

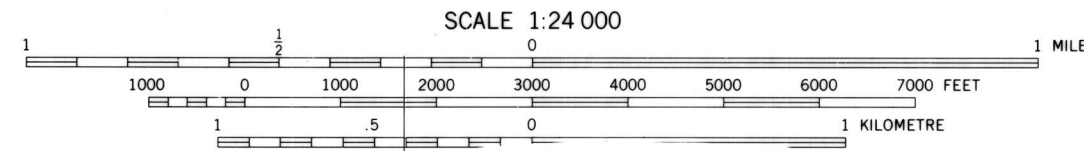
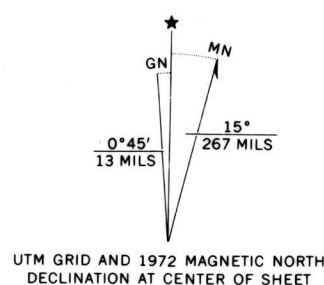
To convert feet to meters, multiply feet by 0.3048.

To convert yds³/ton to m³/metric ton, multiply yds³/ton by 0.842.



Base map from U.S. Geological Survey, 1972

Compiled in 1977



**COAL RESOURCE OCCURRENCE MAP OF THE REANUS CONE QUADRANGLE,
POWDER RIVER COUNTY, MONTANA
BY
COLORADO SCHOOL OF MINES RESEARCH INSTITUTE
1979**

PLATE 29
OVERBURDEN ISOPACH AND MINING-RATIO
MAP OF THE
UPPER FLOWERS-GOODALE COAL BED