

OPEN-FILE REPORT  
This report has not been edited for conformity with  
U.S. Geological Survey editorial standards or  
stratigraphic nomenclature.

EXPLANATION

**1200**  
OVERBURDEN ISOPACH—Showing thickness of overburden, in feet, from the surface to the top of the coal bed. Isopach interval 200 feet (61 m).

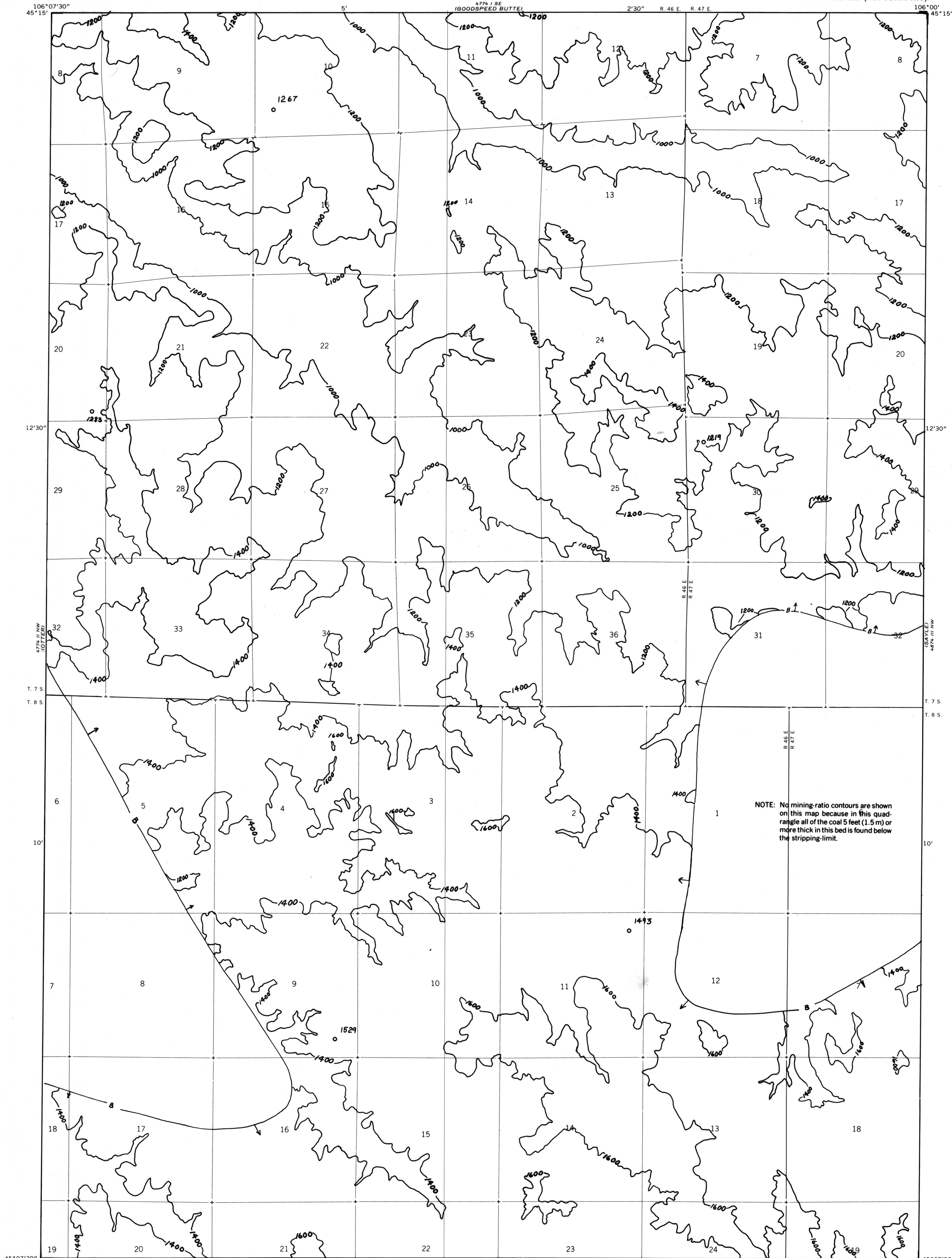
**—**  
BOUNDARY OF COAL 5 FEET OR MORE THICK—  
Drawn along the outcrop of coal bed and/or the inferred  
contact between burned and unburned coal and/or the  
5-foot coal isopach. Arrows point toward area of coal  
5 feet or more thick.

**○ 1219**  
DRILL HOLE—Showing thickness of overburden, in feet,  
from the surface to the top of the coal bed.

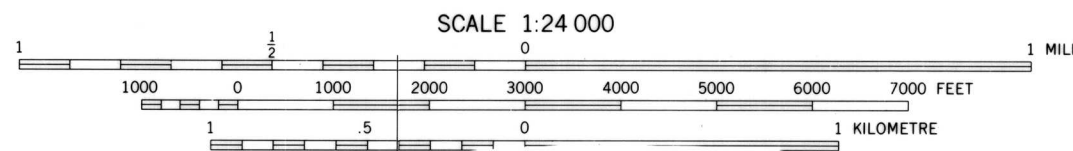
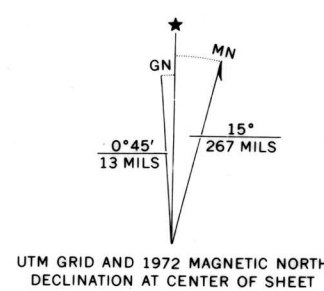
To convert feet to meters, multiply feet by 0.3048.

To convert yds/ton to m<sup>3</sup>/metric ton, multiply yds/ton by  
0.842.

NOTE: No mining-ratio contours are shown  
on this map because in this quad-  
rangle all of the coal 5 feet (1.5 m) or  
more thick in this bed is found below  
the stripping limit.



Base map from U.S. Geological Survey, 1972



**COAL RESOURCE OCCURRENCE MAP OF THE REANUS CONE QUADRANGLE,  
POWDER RIVER COUNTY, MONTANA**

**BY  
COLORADO SCHOOL OF MINES RESEARCH INSTITUTE  
1979**

**PLATE 35  
OVERBURDEN ISOPACH AND MINING-RATIO  
MAP OF THE BROADUS COAL BED**

Compiled in 1977