

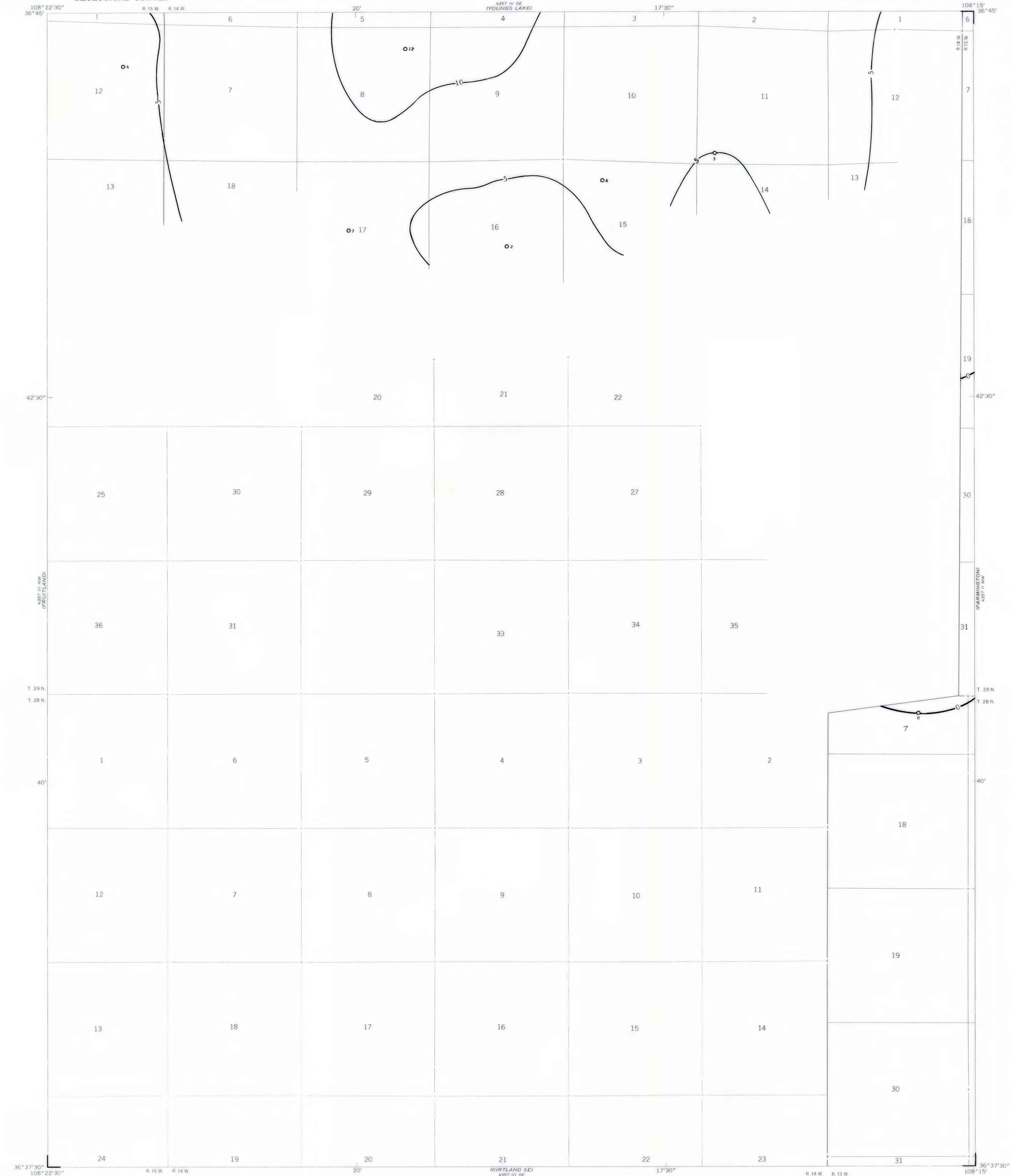
EXPLANATION

0
5
ISOPACHS OF THE FRUITLAND 1 COAL BED -
Showing thickness, in feet. Isopach
interval 5 feet (1.5 meters).

O 12
DRILL HOLE - Showing thickness of the
Fruitland 1 coal bed, in feet.

To convert feet to meters, multiply feet
by 0.3048.

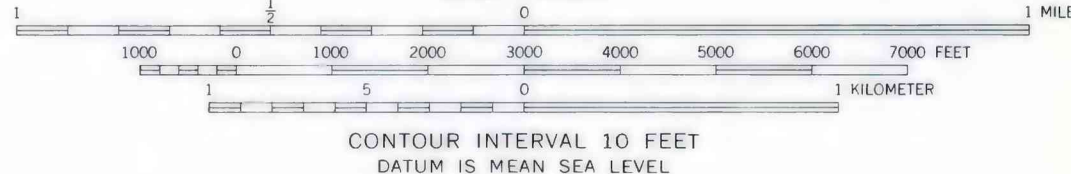
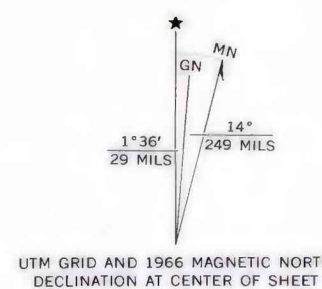
Fruitland coal beds isopached as a single bed
on this map are equivalent in stratigraphic
position but may not be continuous.



Base from U.S. Geological Survey, 1966

(KIRTLAND SE)
4357 III SE
SCALE 1:24,000

Compiled in 1979



This map was prepared under contract to the U.S. Geological Survey and has not been edited for conformity with Geological Survey editorial standards. Opinions and conclusions expressed herein do not necessarily represent those of the Geological Survey.

COAL RESOURCE OCCURRENCE MAP OF THE KIRTLAND QUADRANGLE,
SAN JUAN COUNTY, NEW MEXICO
BY
DAMES & MOORE
1979