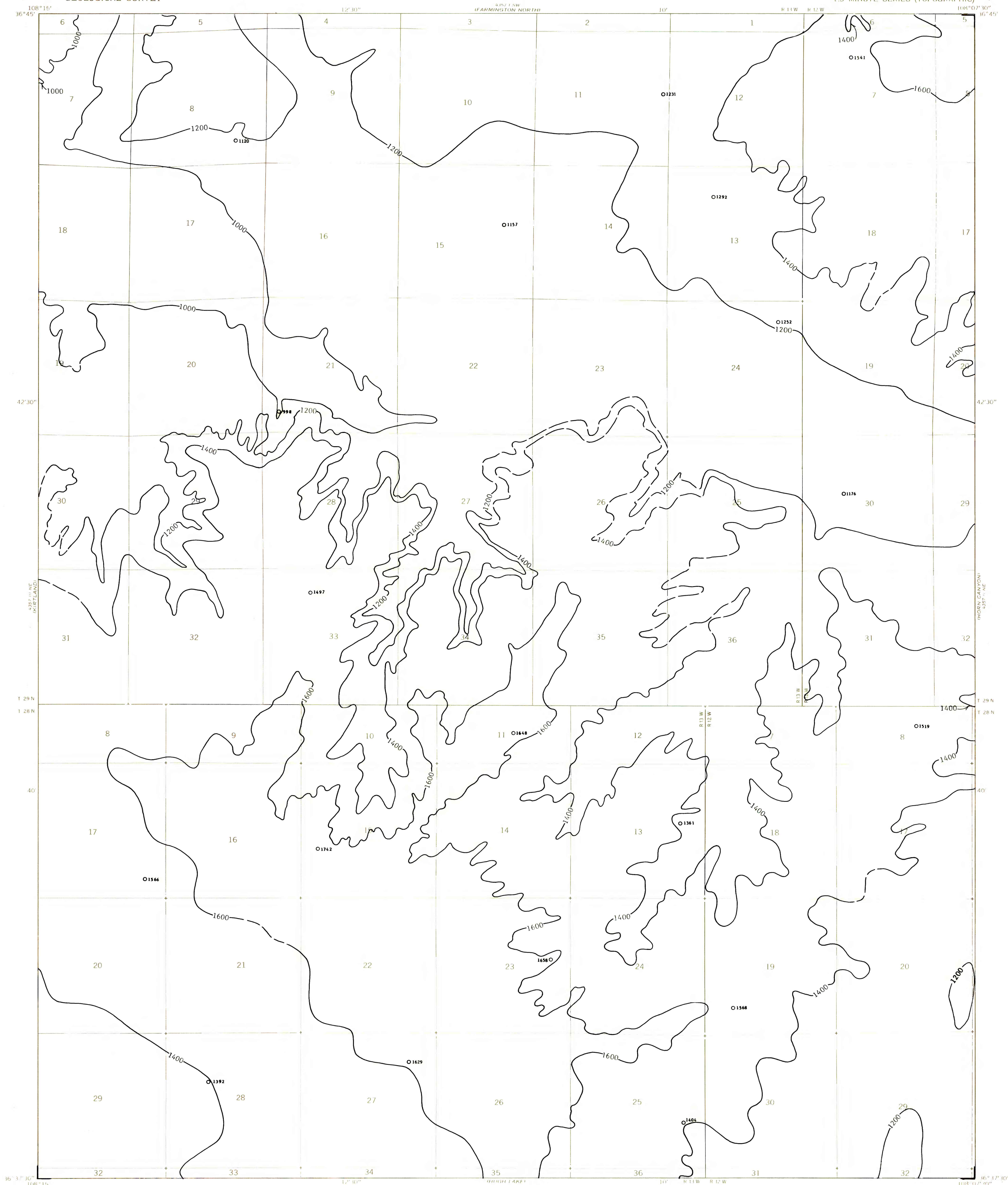


EXPLANATION

1200
OVERBURDEN ISOPACHS - Showing thickness of overburden, in feet, from the surface to the top of the Fruitland I coal bed. Isopach interval 200 feet (61 meters). Isopachs dashed where projected through noncoal-bearing area.

O1176
DRILL HOLE - Showing thickness of overburden, in feet, from the surface to the top of the Fruitland I coal bed.

To convert feet to meters, multiply feet by 0.3048.



COAL RESOURCE OCCURRENCE MAP OF THE FARMINGTON SOUTH
QUADRANGLE, SAN JUAN COUNTY, NEW MEXICO

BY
DAMES & MOORE
1979

PLATE 6
ISOPACH MAP OF OVERBURDEN
OF THE FRUITLAND I COAL BED

This map was prepared under contract to the U.S. Geological Survey and has not been edited for conformity with Geological Survey editorial standards. Opinions and conclusions expressed herein do not necessarily represent those of the Geological Survey.