

EXPLANATION

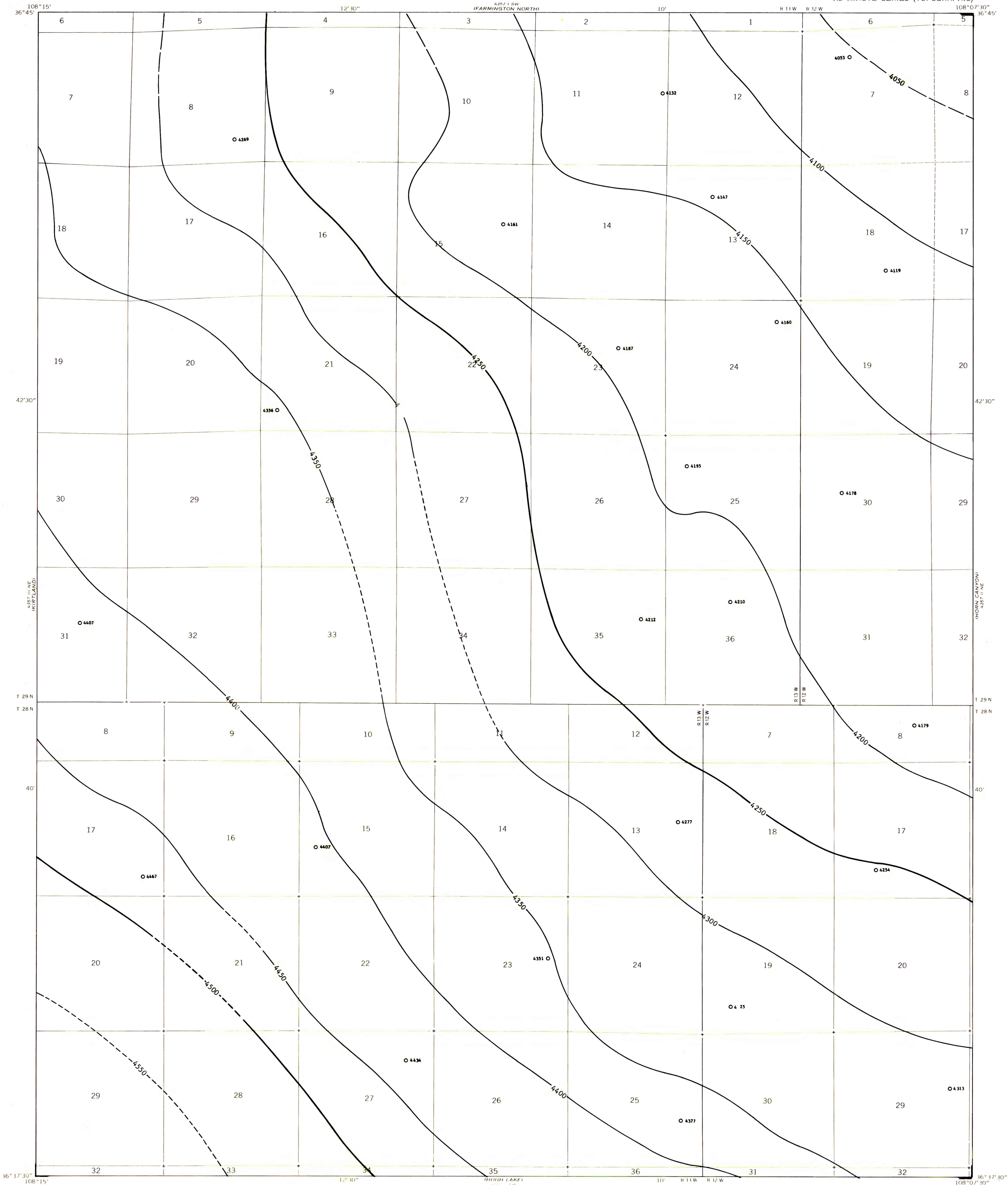
4500  
4550

STRUCTURE CONTOURS - Drawn on top of the Fruitland 2 coal bed. Contour interval 50 feet (15.2 meters). Datum is mean sea level. Contours long dashed where inferred, short dashed where projected through noncoal-bearing areas.

O 4179  
DRILL HOLE - Showing altitude at the top of the Fruitland 2 coal bed, in feet.

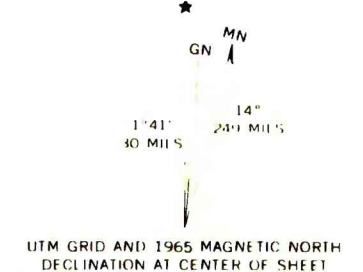
To convert feet to meters, multiply feet by 0.3048.

Fruitland coal beds contoured as a single surface on this map are equivalent in stratigraphic position but may not be continuous.



Base from U.S. Geological Survey, 1965

Compiled in 1979



**COAL RESOURCE OCCURRENCE MAP OF THE FARMINGTON SOUTH  
QUADRANGLE, SAN JUAN COUNTY, NEW MEXICO**  
BY  
**DAMES & MOORE**  
1979

This map was prepared under contract to the U.S. Geological Survey and has not been edited for conformity with Geological Survey editorial standards. Opinions and conclusions expressed herein do not necessarily represent those of the Geological Survey.