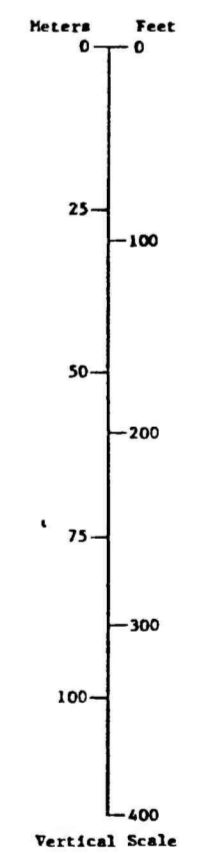
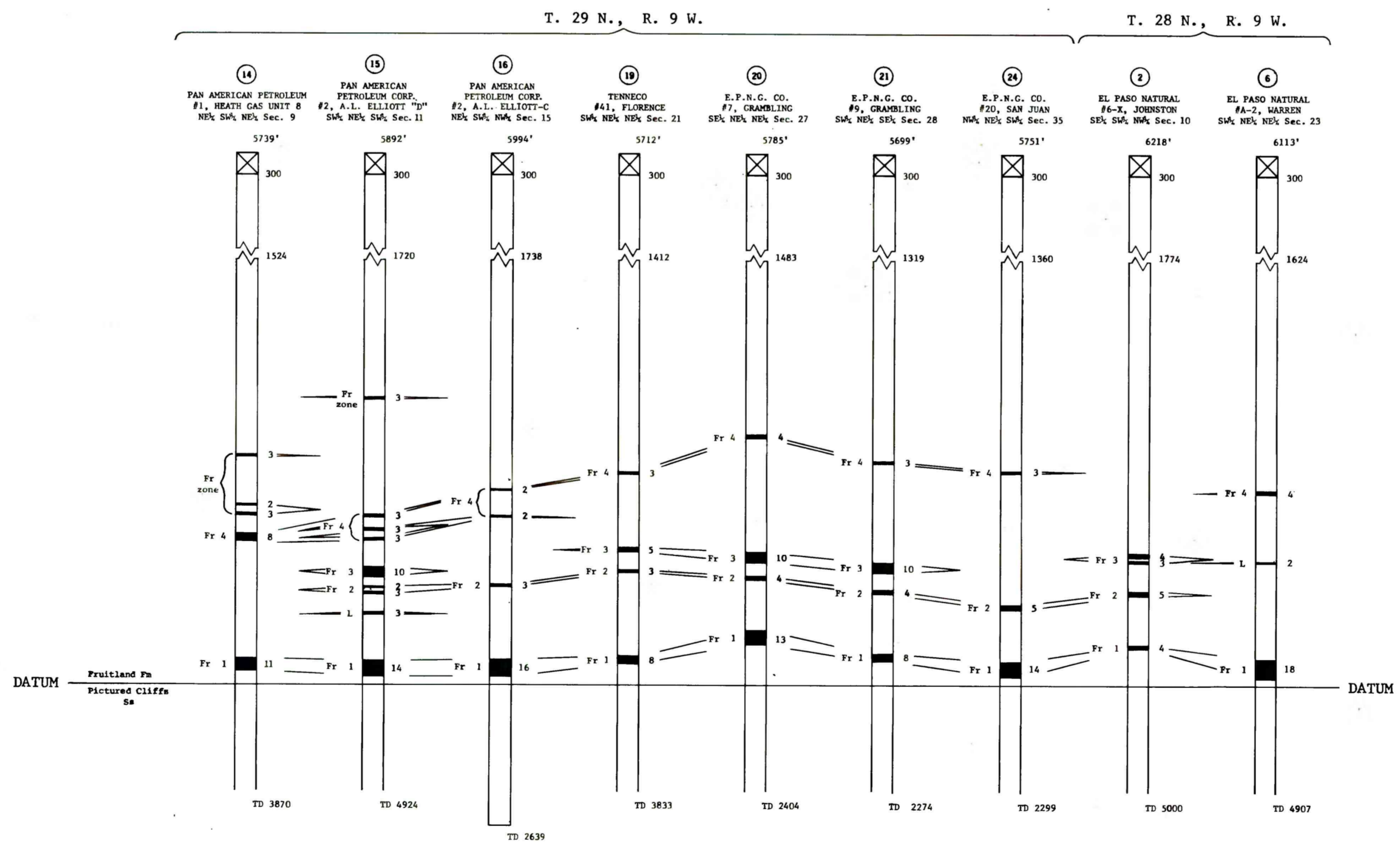
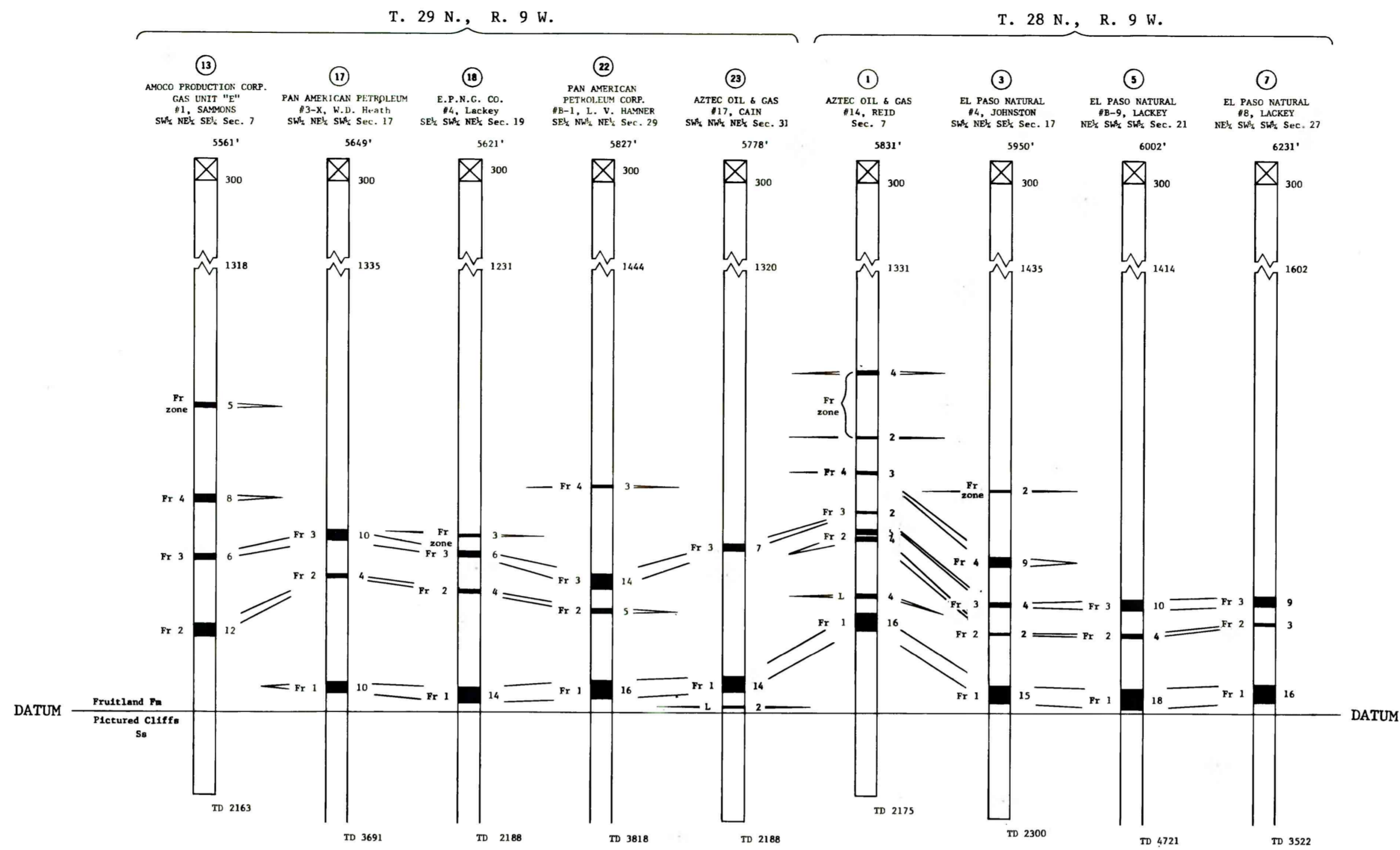


CORRELATION OF COAL BEDS IN DRILL HOLES



COAL RESOURCE OCCURRENCE MAP OF THE NORTHEAST QUARTER OF  
THE BLOOMFIELD 15-MINUTE QUADRANGLE, SAN JUAN COUNTY, NEW MEXICO  
BY  
DAMES & MOORE  
1979

This map was prepared under contract to the U.S. Geological Survey by Dames & Moore, Inc. It is in conformity with Geological Survey editorial standards. Opinions and conclusions expressed herein do not necessarily represent those of the Geological Survey.

Compiled in 1979

PLATE 3  
SHEET 2 OF 2  
COAL DATA SHEET