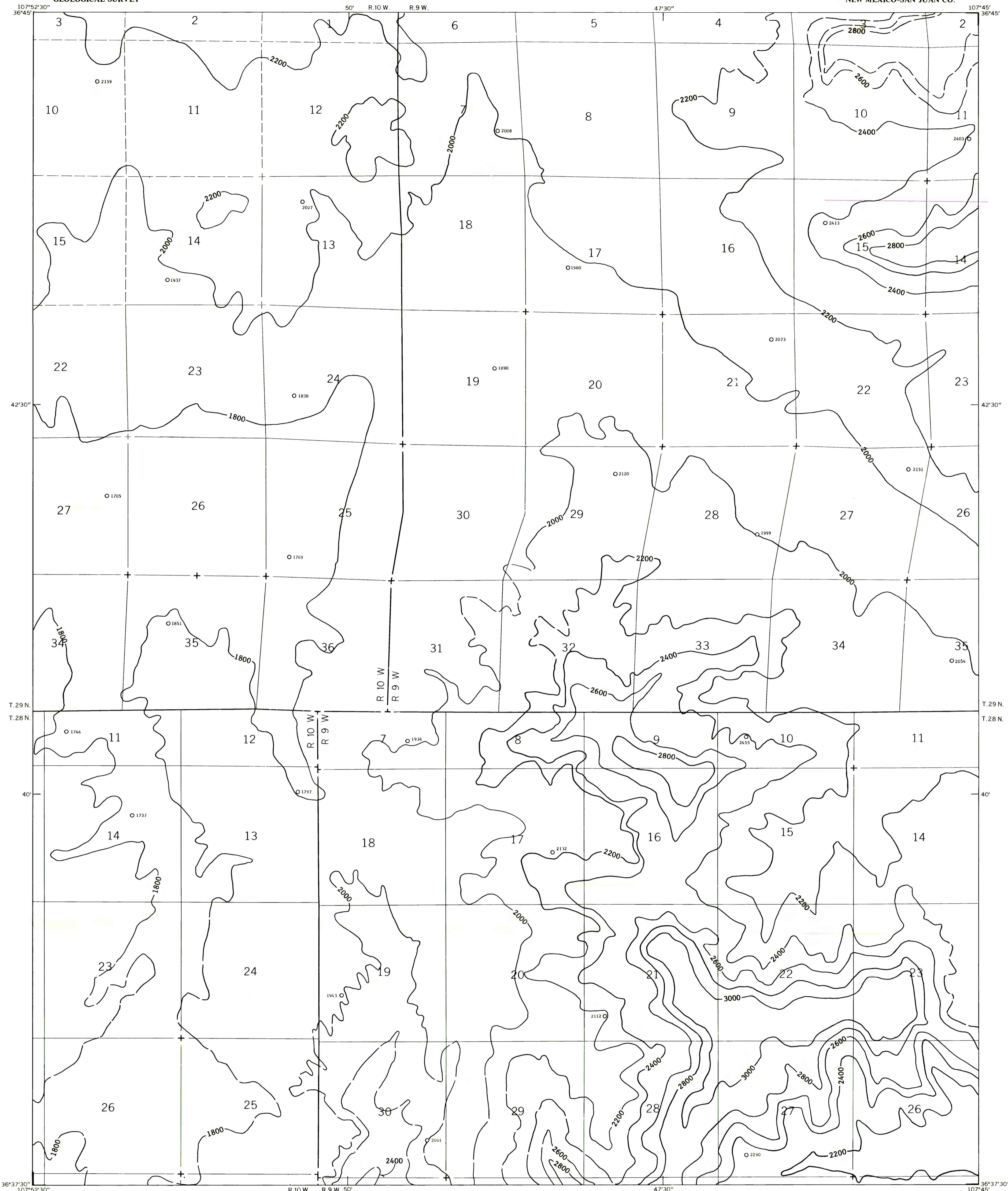


EXPLANATION

2000
OVERBURDEN ISOPACHS - Showing thickness of overburden, in feet, from the surface to the top of the Fruitland 2 coal bed. Isopach interval 200 feet (61 meters). Isopachs long dashed where inferred, short dashed where projected through noncoal-bearing area.

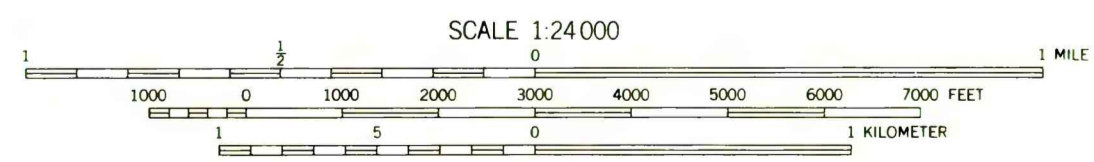
○ 2151
DRILL HOLE - Showing thickness of overburden, in feet, from the surface to the top of the Fruitland 2 coal bed.

To convert feet to meters, multiply feet by 0.3048.



Base from U.S. Geological Survey, 1960

Compiled in 1979



COAL RESOURCE OCCURRENCE MAP OF THE NORTHEAST QUARTER OF THE
BLOOMFIELD 15-MINUTE QUADRANGLE, SAN JUAN COUNTY, NEW MEXICO

BY
DAMES & MOORE
1979

This map was prepared under contract to the U.S. Geological Survey and has not been edited for conformity with Geological Survey editorial standards. Opinions and conclusions expressed herein do not necessarily represent those of the Geological Survey.

PLATE 10
ISOPACH MAP OF OVERBURDEN
OF THE FRUITLAND 2 COAL BED