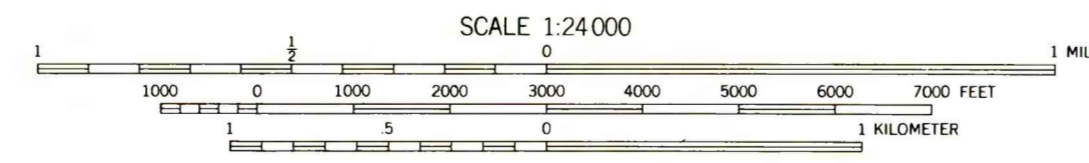
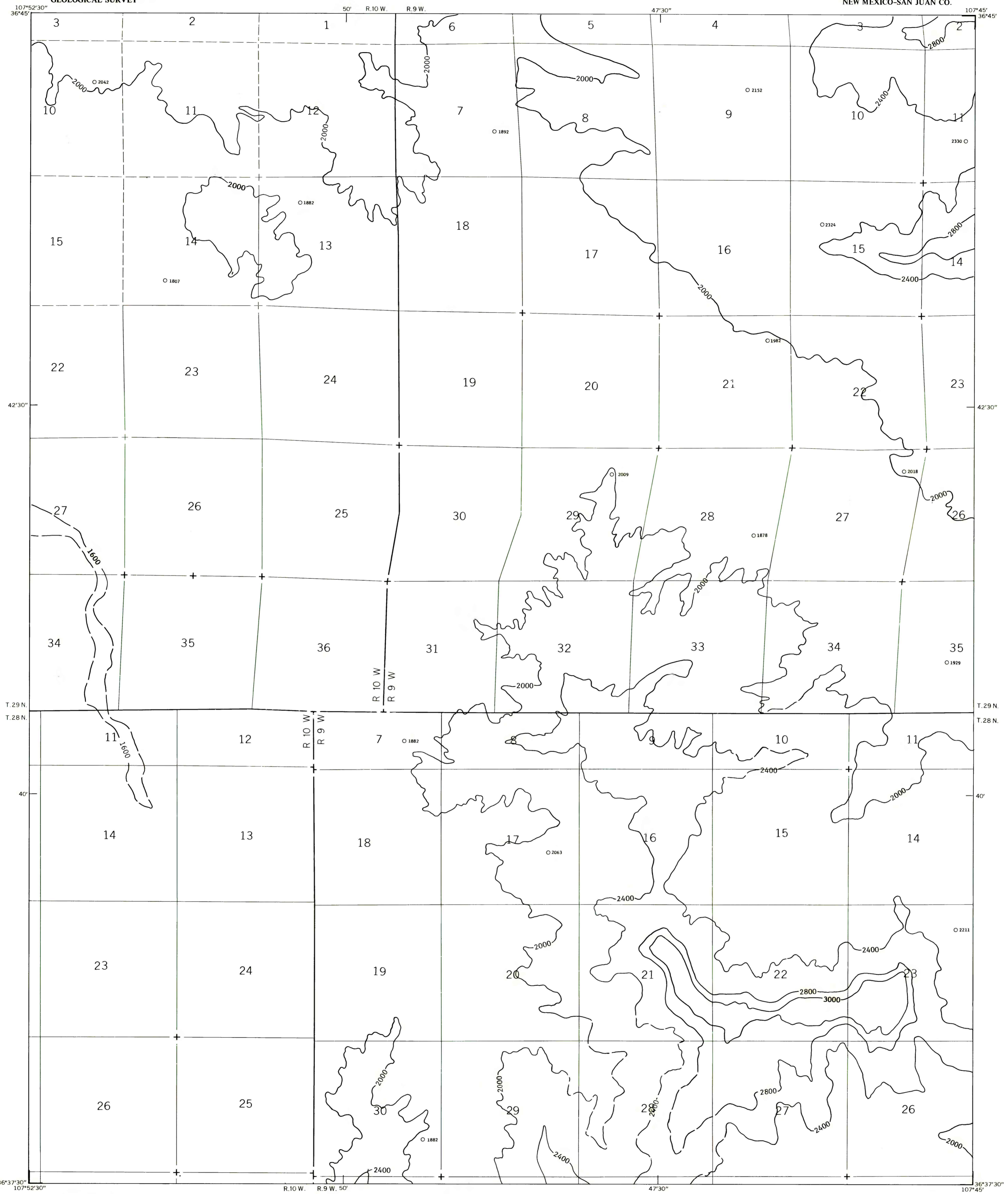


EXPLANATION

**- 2400 -**  
OVERBURDEN ISOPACHS - Showing thickness of overburden, in feet, from the surface to the top of the Fruitland 4 coal bed. Isopach interval 400 feet (122 meters). Isopachs dashed where projected through noncoal-bearing area. Supplemental 3000-foot (914-meter) overburden isopach added.

○ 2063  
DRILL HOLE - Showing thickness of overburden, in feet, from the surface to the top of the Fruitland 4 coal bed.

To convert feet to meters, multiply feet by 0.3048.



**COAL RESOURCE OCCURRENCE MAP OF THE NORTHEAST QUARTER OF THE  
BLOOMFIELD 15-MINUTE QUADRANGLE, SAN JUAN COUNTY, NEW MEXICO**

**BY  
DAMES & MOORE  
1979**

This map was prepared under contract to the U.S. Geological Survey and has not been edited for conformity with Geological Survey editorial standards. Opinions and conclusions expressed herein do not necessarily represent those of the Geological Survey.

**PLATE 18  
ISOPACH MAP OF OVERBURDEN  
OF THE FRUITLAND 4 COAL BED**