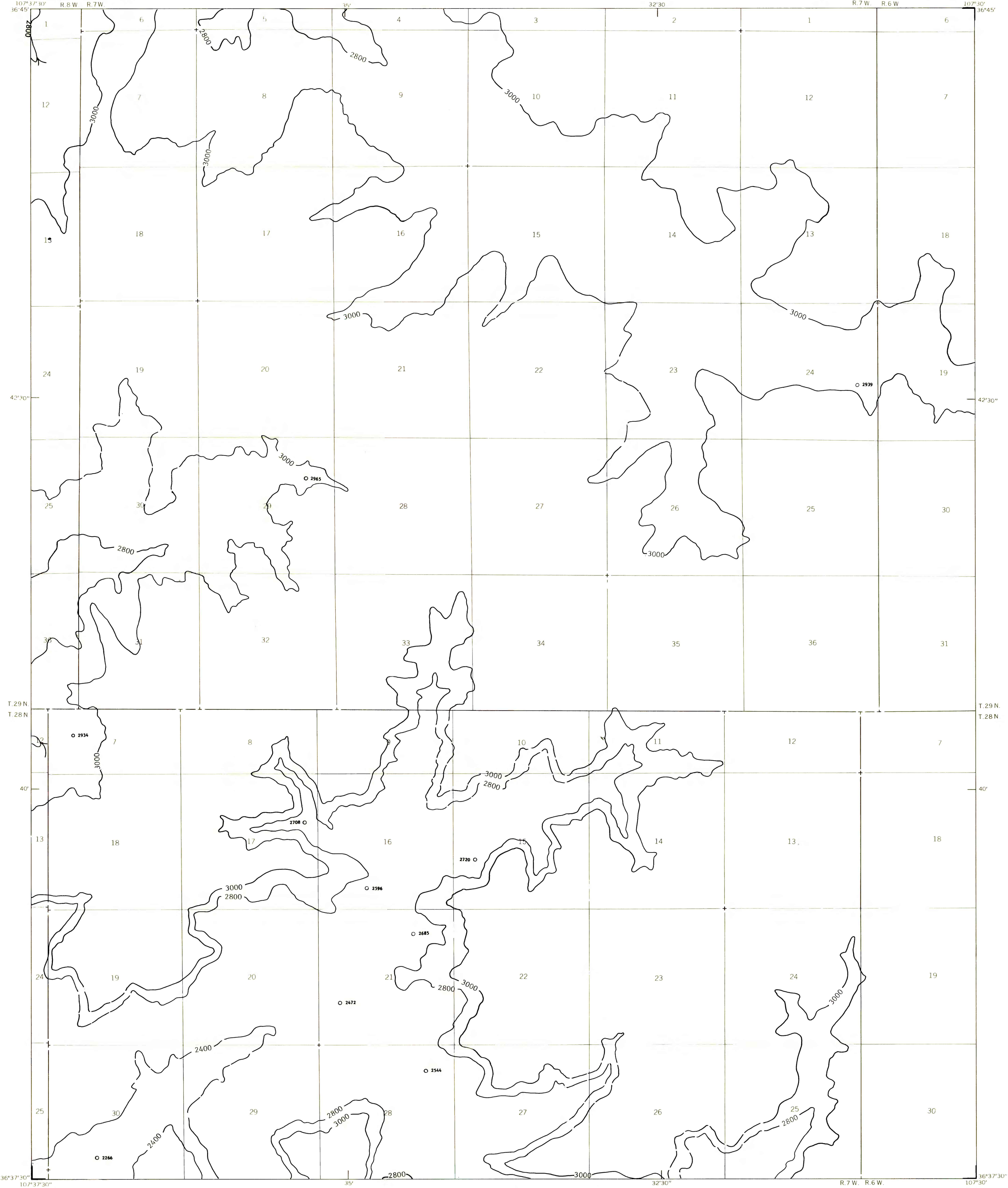


EXPLANATION

2400  
OVERBURDEN ISOPACHS - Showing thickness of overburden, in feet, from the surface to the top of the Fruitland 4 coal bed. Isopach interval 400 feet (122 meters). Isopachs dashed where projected through noncoal-bearing areas. Supplemental 3000-foot (914-meter) overburden isopach added.

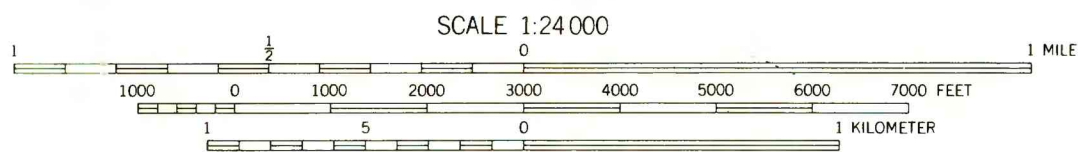
O 2472  
DRILL HOLE - Showing thickness of overburden, in feet, from the surface to the top of the Fruitland 4 coal bed.

To convert feet to meters, multiply feet by 0.3048.



Base from U.S. Geological Survey, 1959

Compiled in 1979



COAL RESOURCE OCCURRENCE MAP OF THE NORTHEAST QUARTER OF  
THE GOULD PASS 15-MINUTE QUADRANGLE, RIO ARriba AND SAN JUAN COUNTIES, NEW MEXICO  
BY  
DAMES & MOORE  
1979

PLATE 14  
ISOPACH MAP OF OVERBURDEN  
OF THE FRUITLAND 4 COAL BED

This map was prepared under contract to the U.S. Geological Survey and has not been edited for conformity with Geological Survey editorial standards. Opinions and conclusions expressed herein do not necessarily represent those of the Geological Survey.