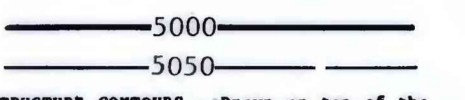


EXPLANATION

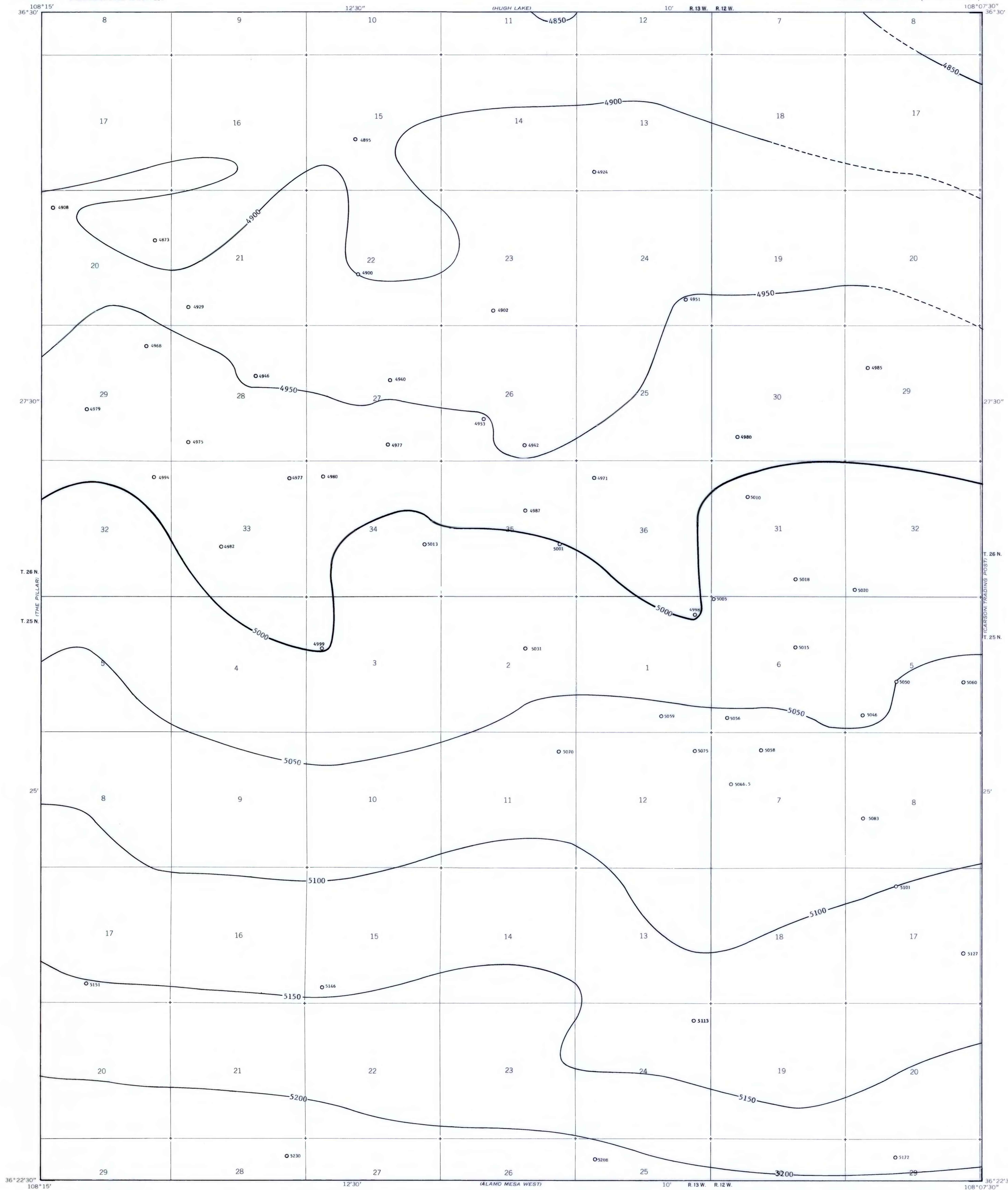


STRUCTURE CONTOURS - Drawn on top of the Fruitland 1 coal bed. Contour interval 50 feet (15.2 meters). Datum is mean sea level. Contours dashed where projected through noncoal-bearing area.

○ 5059
DRILL HOLE - Showing altitude at the top of the Fruitland 1 coal bed, in feet.

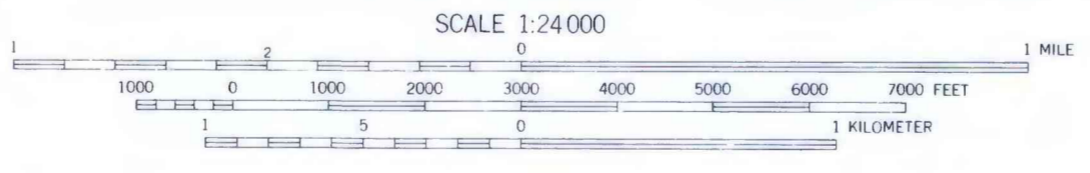
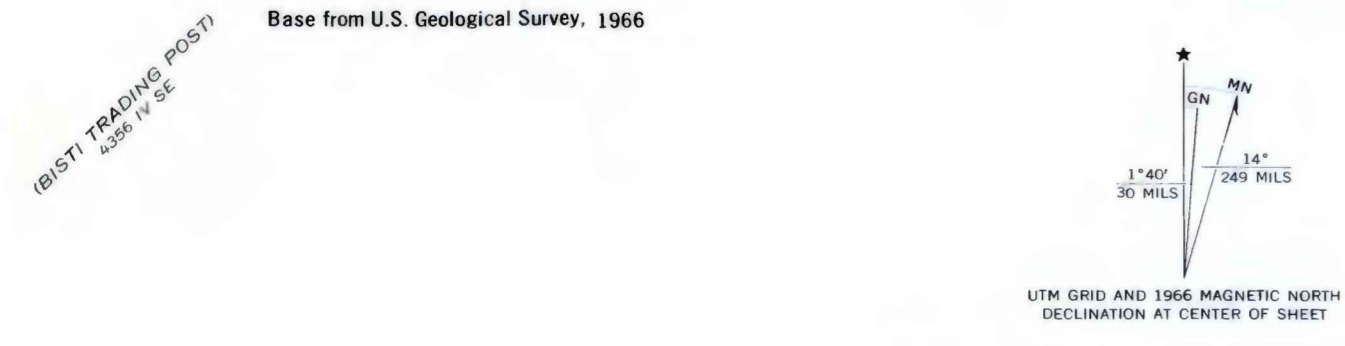
To convert feet to meters, multiply feet by 0.3048.

Fruitland coal beds contoured as a single surface on this map are equivalent in stratigraphic position but may not be continuous.



Base from U.S. Geological Survey, 1966

Compiled in 1979



COAL RESOURCE OCCURRENCE MAP OF THE MONCISCO WASH
QUADRANGLE, SAN JUAN COUNTY, NEW MEXICO

BY
DAMES & MOORE
1979

PLATE 17
STRUCTURE CONTOUR MAP
OF THE FRUITLAND 1 COAL BED

This map was prepared under contract to the U.S. Geological Survey and has not been edited for conformity with Geological Survey editorial standards. Opinions and conclusions expressed herein do not necessarily represent those of the Geological Survey.