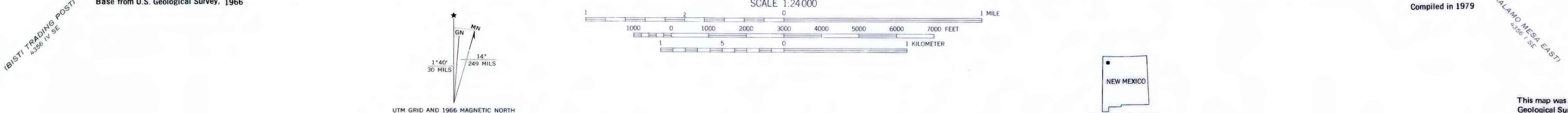
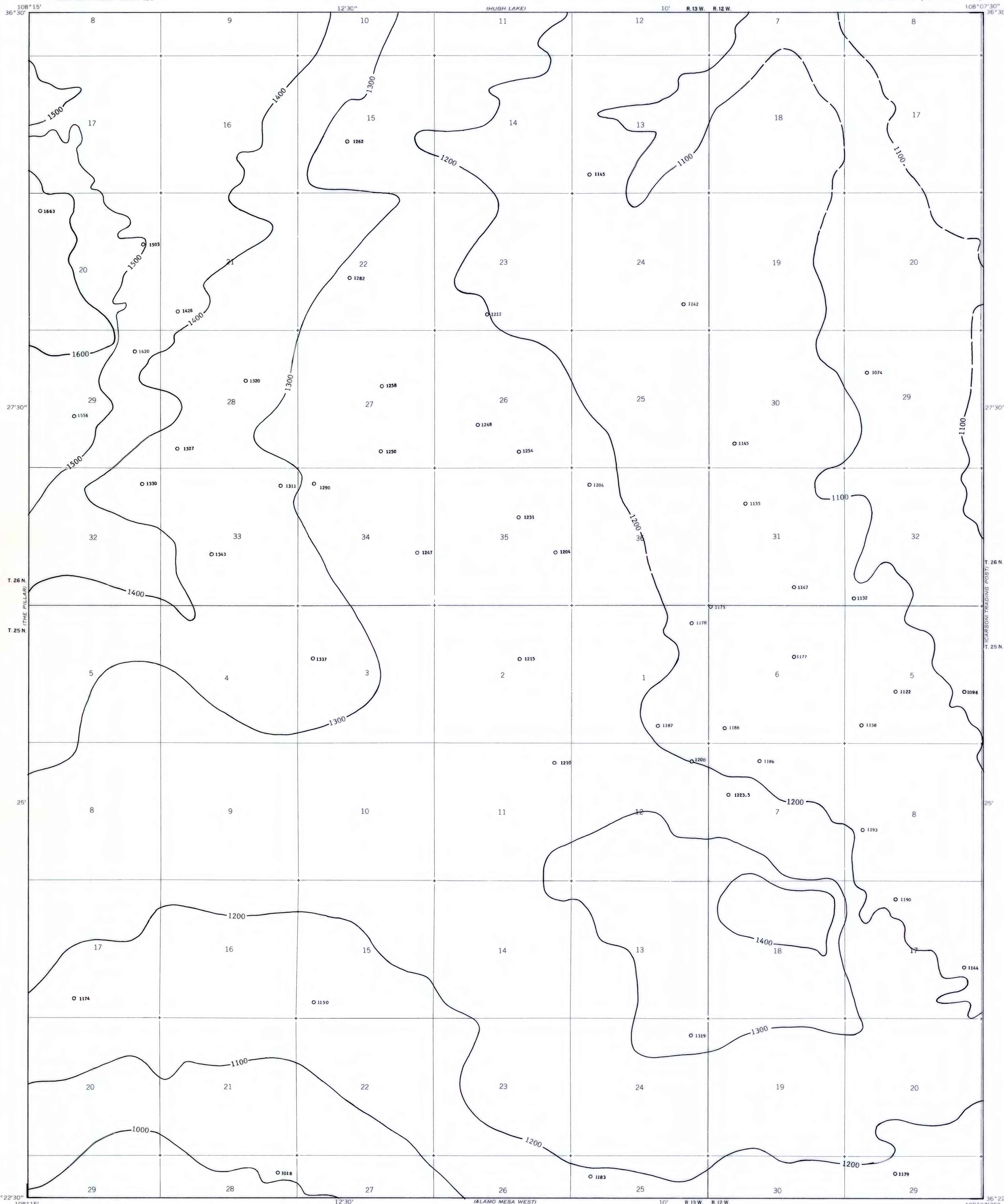


EXPLANATION

— 1100 —  
OVERBURDEN ISOPACHS - Showing thickness of overburden, in feet, from the surface to the top of the Fruitland I coal bed. Isopach interval 100 feet (30.5 meters). Isopachs dashed where projected through monocline-bearing areas.

○ 1215  
DRILL HOLE - Showing thickness of overburden, in feet, from the surface to the top of the Fruitland I coal bed.

To convert feet to meters, multiply feet by 0.3048.



**COAL RESOURCE OCCURRENCE MAP OF THE MONCISCO WASH  
QUADRANGLE, SAN JUAN COUNTY, NEW MEXICO**  
BY  
**DAMES & MOORE**  
1979

This map was prepared under contract to the U.S. Geological Survey and has not been edited for conformity with Geological Survey editorial standards. Opinions and conclusions expressed herein do not necessarily represent those of the Geological Survey.