

(MAY DEER SPRING)
4455 IV SE
107° 52' 30"
40° 45'

UNITED STATES
DEPARTMENT OF THE INTERIOR
GEOLOGICAL SURVEY

IRON SPRINGS QUADRANGLE
COLORADO—MOFFAT CO.
7.5 MINUTE SERIES (TOPOGRAPHIC)

OPEN FILE REPORT 79-816

PLATE 5 OF 24

EXPLANATION

6000
5900

STRUCTURE CONTOURS - Drawn on top of coal bed. Solid where vertical accuracy within 40 feet; long dashed where vertical accuracy possibly not within 40 feet. Contour interval 100 feet (31 m). Datum is mean sea level.

○ 5524

DRILL HOLE - Showing altitude of top of coal bed, in feet.

FU[2] - Fort Union [2]

COAL BED SYMBOL AND NAME - Coal bed identified by bracketed numbers is not formally named, but is numbered for identification purposes in this quadrangle only.

----- FU[2] -----

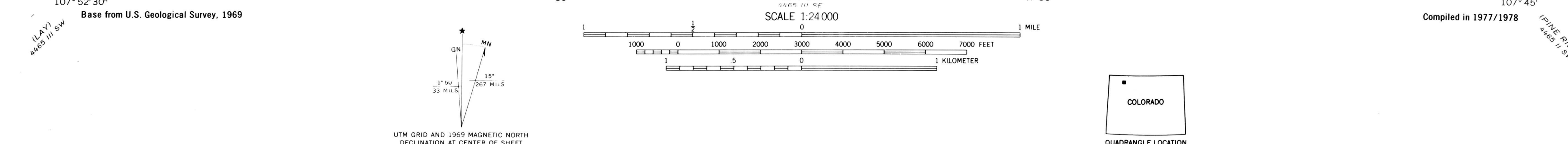
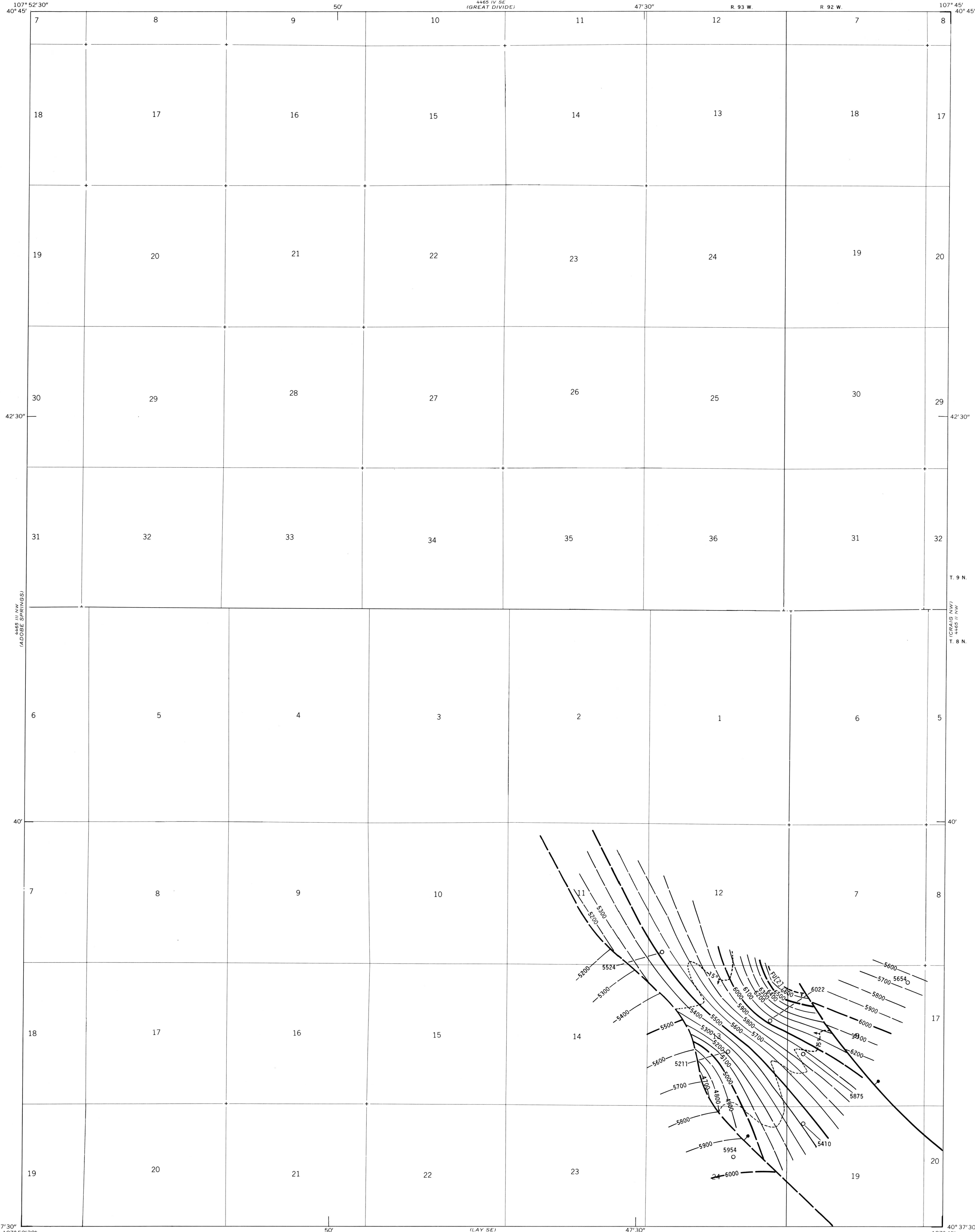
TRACE OF COAL BED OUTCROP - Showing symbol of name of coal bed as listed above. Arrow points toward coal-bearing area. Short dashed where inferred by present authors.

----- 15° -----

SUBSURFACE MINING LIMIT - Showing areas where dip of coal bed is greater than 15° and subsurface mining by conventional methods is not considered feasible. Reserve Base tonnages are calculated beyond limit; Reserve tonnages are not. Arrow points toward area where dips are greater than 15°.

TRACE OF FAULT - Bar and ball on down-thrown side. Dashed where inferred by present authors.

To convert feet to meters, multiply feet by 0.3048.



**COAL RESOURCE OCCURRENCE MAP OF THE IRON SPRINGS
QUADRANGLE, MOFFAT COUNTY, COLORADO**
BY
DAMES & MOORE
1979

This report has not been edited for conformity with U.S. Geological Survey editorial standards of stratigraphic nomenclature.

PLATE 5
STRUCTURE CONTOUR MAP OF
THE FORT UNION [2] COAL BED