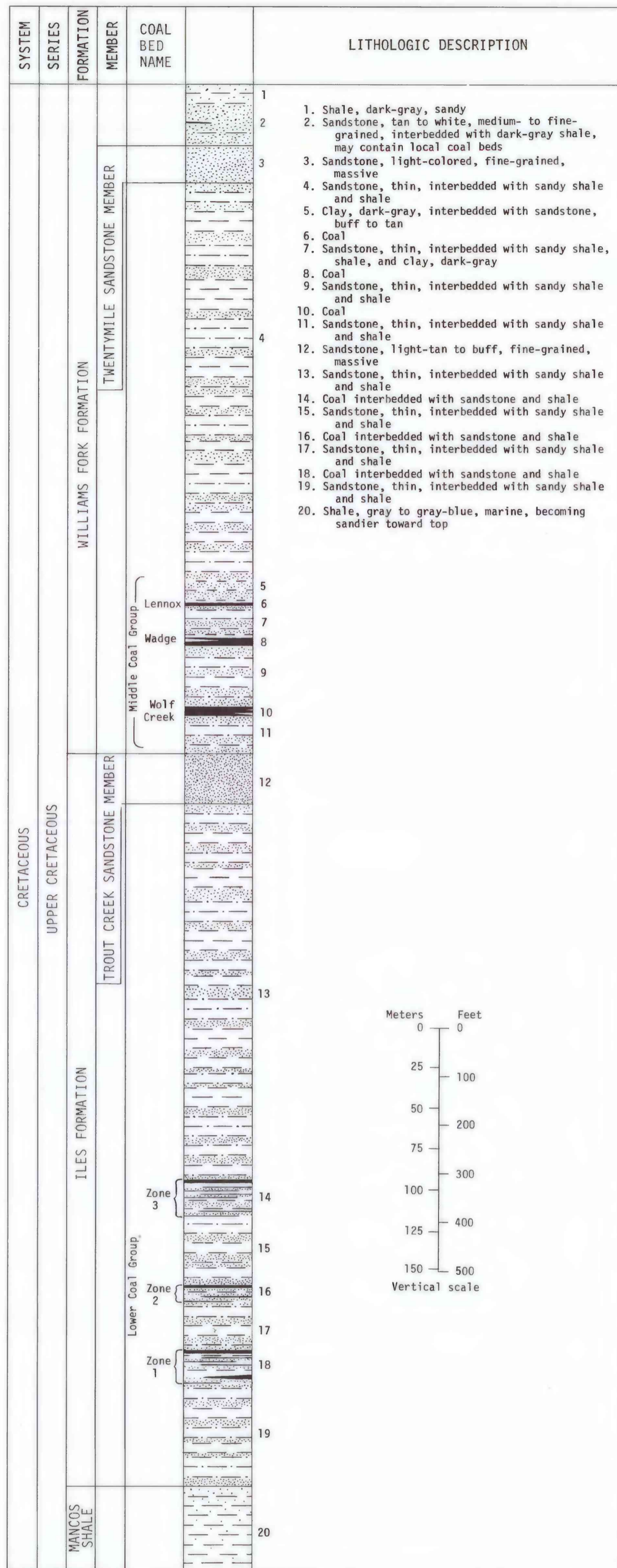
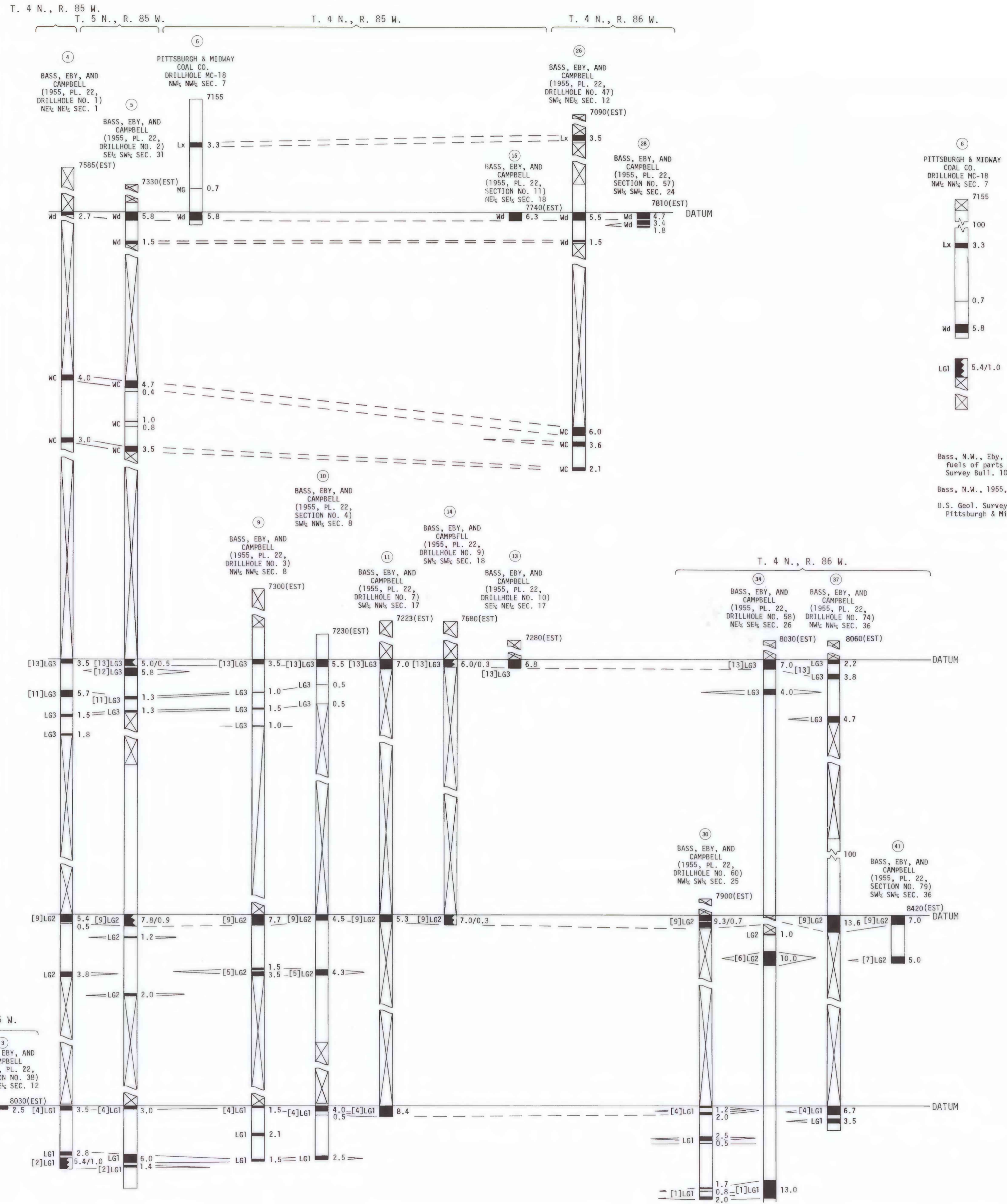


COMPOSITE COLUMNAR SECTION



CORRELATION OF COAL BEDS IN DRILL HOLES AND MEASURED SECTIONS



EXPLANATION

Index number

Drillhole or measured section name

Drillhole or measured section location

Altitude, in feet, of drillhole at surface or top of measured section (when taken from topographic map - EST)

Break in rock section showing thickness, in feet, not plotted

Coal bed showing thickness in feet

Coal bed symbols and names - Coal beds or zones identified by bracketed numbers are not formally named, but are numbered for identification purposes in this quadrangle only.

Lx - Lennox
Wd - Wadge
WC - Wolf Creek
LG3 - Lower Coal Group, zone 3
LG2 - Lower Coal Group, zone 2
LG1 - Lower Coal Group, zone 1
MG - Middle Group

Coal interbedded with rock, total coal thickness/total rock thickness

No record of lithology

Break in section; interval thickness unknown

Column shown closed if hole at total depth or at end of measured section

REFERENCES

Bass, N.W., Eby, J.B., and Campbell, M.R., 1955, Geology and mineral fuels of parts of Routt and Moffat Counties, Colorado: U.S. Geol. Survey Bull. 1027-D, p. 143-250.

Bass, N.W., 1955, Unpublished field notes: U.S. Geol. Survey.

U.S. Geol. Survey, 1969, Inactive Coal Lease File, Appeal No. C-794, Pittsburgh & Midway Coal Co.

COAL RESOURCE OCCURRENCE MAP OF THE OAK CREEK QUADRANGLE, ROUTT COUNTY, COLORADO
BY
DAMES & MOORE
1979