

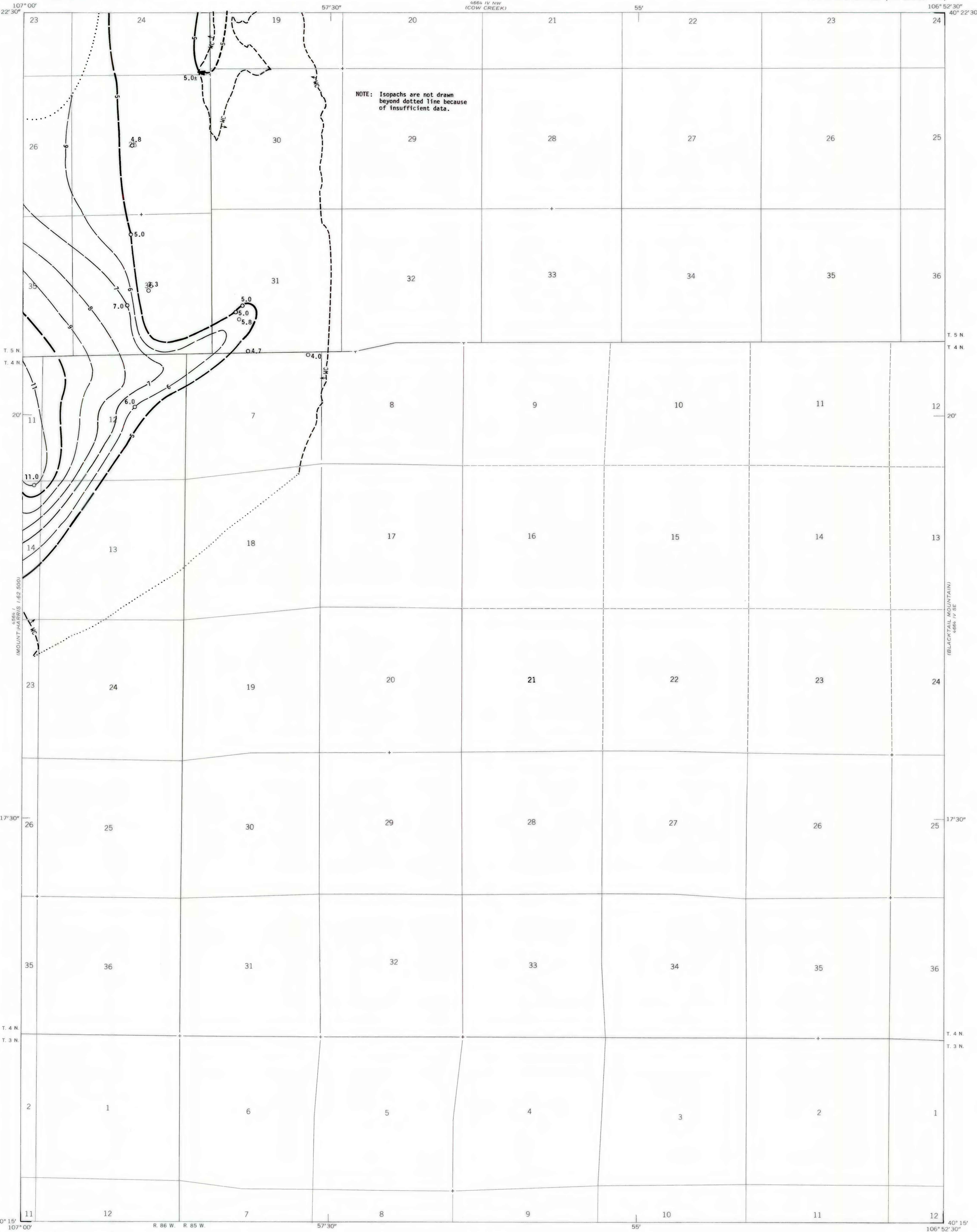
4866 IV NW
1927-2020

4866 IV NE
1927-2020

UNITED STATES
DEPARTMENT OF THE INTERIOR
GEOLOGICAL SURVEY

OAK CREEK QUADRANGLE
COLORADO—ROUTT CO.
7.5 MINUTE SERIES (TOPOGRAPHIC)

OPEN FILE REPORT 79-818
PLATE 13 OF 23



EXPLANATION

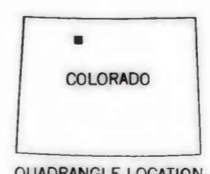
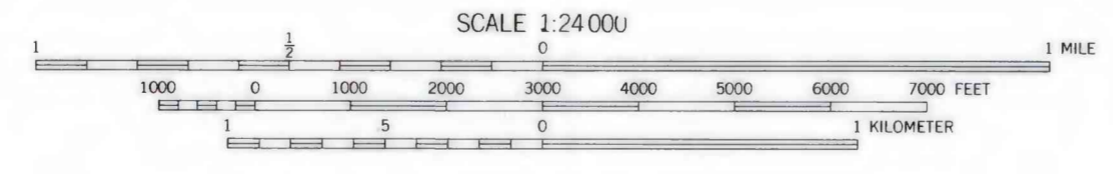
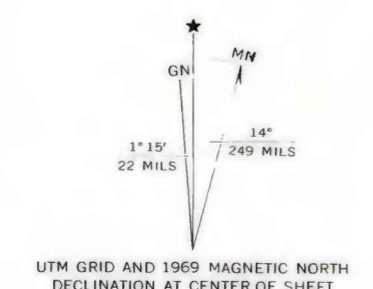
- 5 ————
- 6 - - - - -
- ISOPACHS - Showing thickness of coal, in feet. Long dashed where inferred; short dashed where projected beyond coal-bearing area. Isopach interval 1 foot.
- 5.0
- DRILL HOLE - Showing thickness of coal, in feet.
- ▲ 5.0+
- POINT OF MEASUREMENT - Showing thickness of coal, in feet. Includes all points of measurement other than drill holes.
- WC - Wolf Creek
- COAL BED SYMBOL AND NAME
- ▲—— WC ———
- TRACE OF COAL BED OUTCROP - Showing symbol of name of coal bed as listed above. Arrow points toward coal-bearing area. Short dashed where inferred by present authors.

To convert feet to meters, multiply feet by 0.3048.

1840 POINT
4866 IV NE

Base from U.S. Geological Survey, 1969

Compiled in 1977/1978



**COAL RESOURCE OCCURRENCE MAP OF THE OAK CREEK
QUADRANGLE, ROUTT COUNTY, COLORADO**
BY
DAMES & MOORE
1979

This report has not been edited for conformity with U.S. Geological Survey editorial standards or stratigraphic nomenclature.

PLATE 13
ISOPACH MAP OF THE
WOLF CREEK COAL BED