

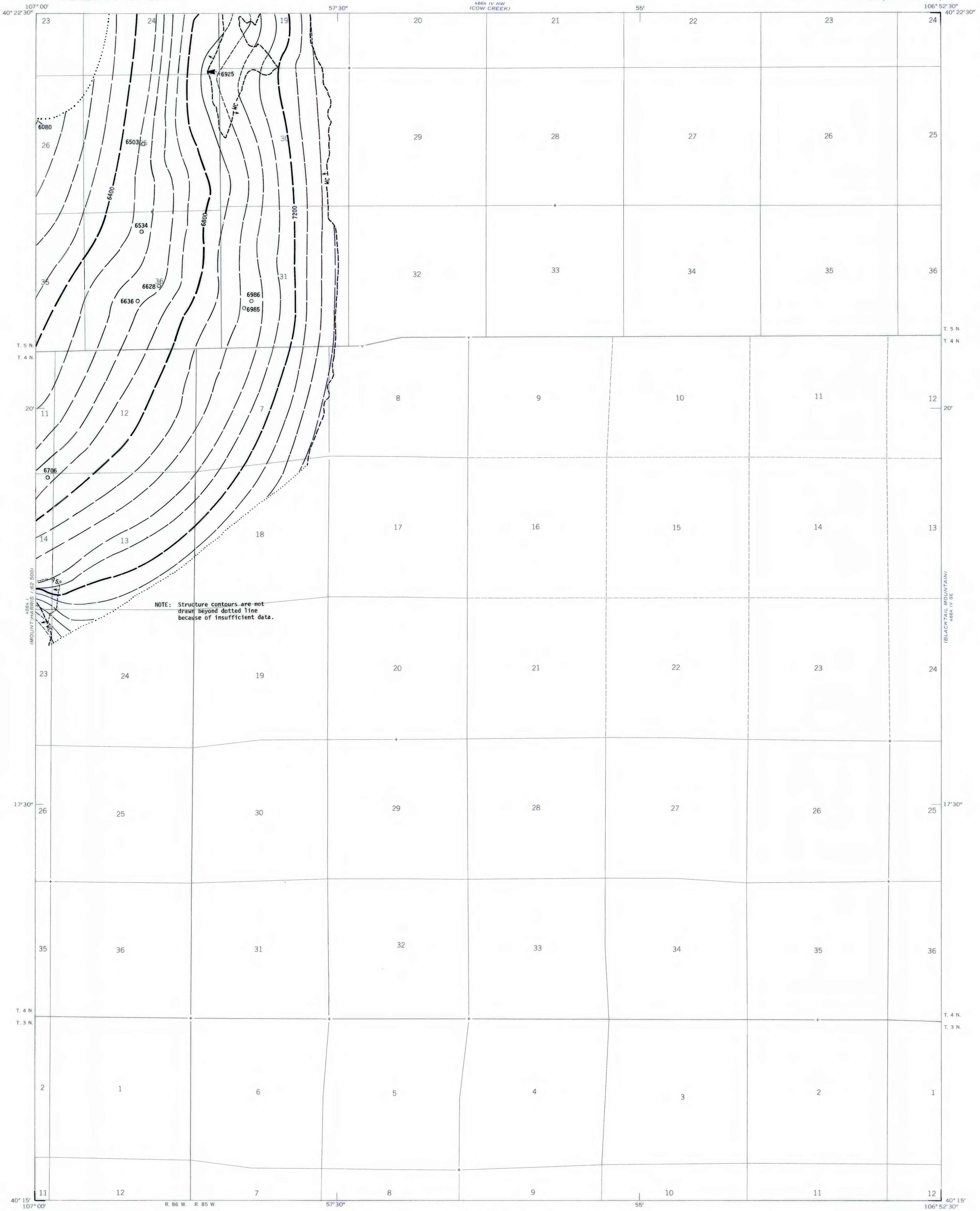
(MOUNTAIN SPRINGS)
192-1000

UNITED STATES
DEPARTMENT OF THE INTERIOR
GEOLOGICAL SURVEY

OAK CREEK QUADRANGLE
COLORADO—ROUTT CO.
7.5 MINUTE SERIES (TOPOGRAPHIC)

(STEAMBOAT SPRINGS)
192-1000

OPEN FILE REPORT 79-818
PLATE 14 OF 23



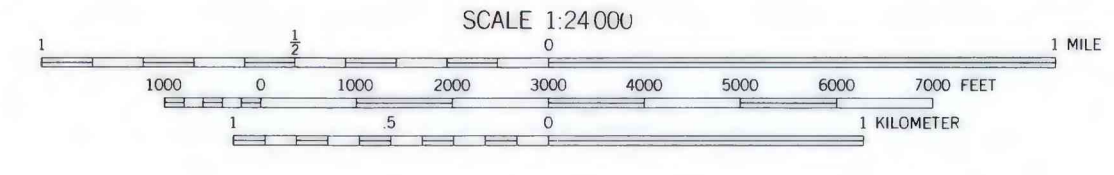
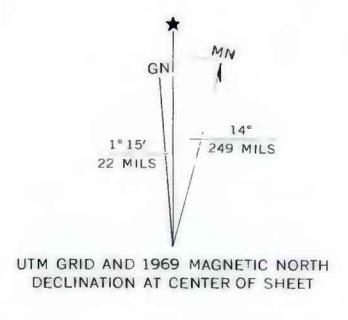
EXPLANATION

- 7600 -----
- STRUCTURE CONTOURS - Drawn on top of coal bed. Solid where vertical accuracy within 40 feet; long dashed where vertical accuracy possibly not within 40 feet; short dashed where projected above ground surface. Contour interval is 80 feet (24 m). Datum is mean sea level.
- 6985
- DRILL HOLE - Showing thickness of coal, in feet.
- ▲ 6925
- POINT OF MEASUREMENT - Showing thickness of coal, in feet.
- WC - Wolf Creek
- COAL BED SYMBOL AND NAME
- WC -----
- TRACE OF COAL BED OUTCROP - Showing symbol of name of coal bed as listed above. Arrow points toward coal-bearing area. Short dashed where inferred by present authors.
- 15° -----
- SUBSURFACE MINING LIMIT - Showing areas where dips of coal beds are greater than 15° and subsurface mining by conventional methods is not considered feasible. Reserve base tonnages are calculated beyond limit; Reserve tonnages are not. Arrow points toward area where dips are greater than 15°.
- To convert feet to meters, multiply feet by 0.3048.

NOTE: Structure contours are not drawn beyond dotted line because of insufficient data.

(SAND CREEK)
192-1000

Base from U.S. Geological Survey, 1969



Compiled in 1977/1978

**COAL RESOURCE OCCURRENCE MAP OF THE OAK CREEK
QUADRANGLE, ROUTT COUNTY, COLORADO**
BY
DAMES & MOORE
1979

This report has not been edited for conformity with U.S. Geological Survey editorial standards or stratigraphic nomenclature.

PLATE 14
STRUCTURE CONTOUR MAP
OF THE WOLF CREEK COAL BED