

EXPLANATION

OVERBURDEN ISOPACHS - Showing thickness of overburden, in feet, from surface to top of coal bed. Dashed where vertical accuracy possibly not within 40 feet. Isopach interval is 100 feet (31 m) over strip-pable coal and 200 feet (61 m) beyond the stripping-limit line.

DRILL HOLE - Showing thickness of overburden, in feet, from surface to top of coal bed.

MINING-RATIO CONTOUR - Number indicates cubic yards of overburden per ton of recoverable coal by surface mining methods. Contours shown only in areas underlain by coal of Reserve Base thickness within the stripping-limit (in this quadrangle, the 200-foot-overburden isopach).

WC - Wolf Creek
COAL BED SYMBOL AND NAME

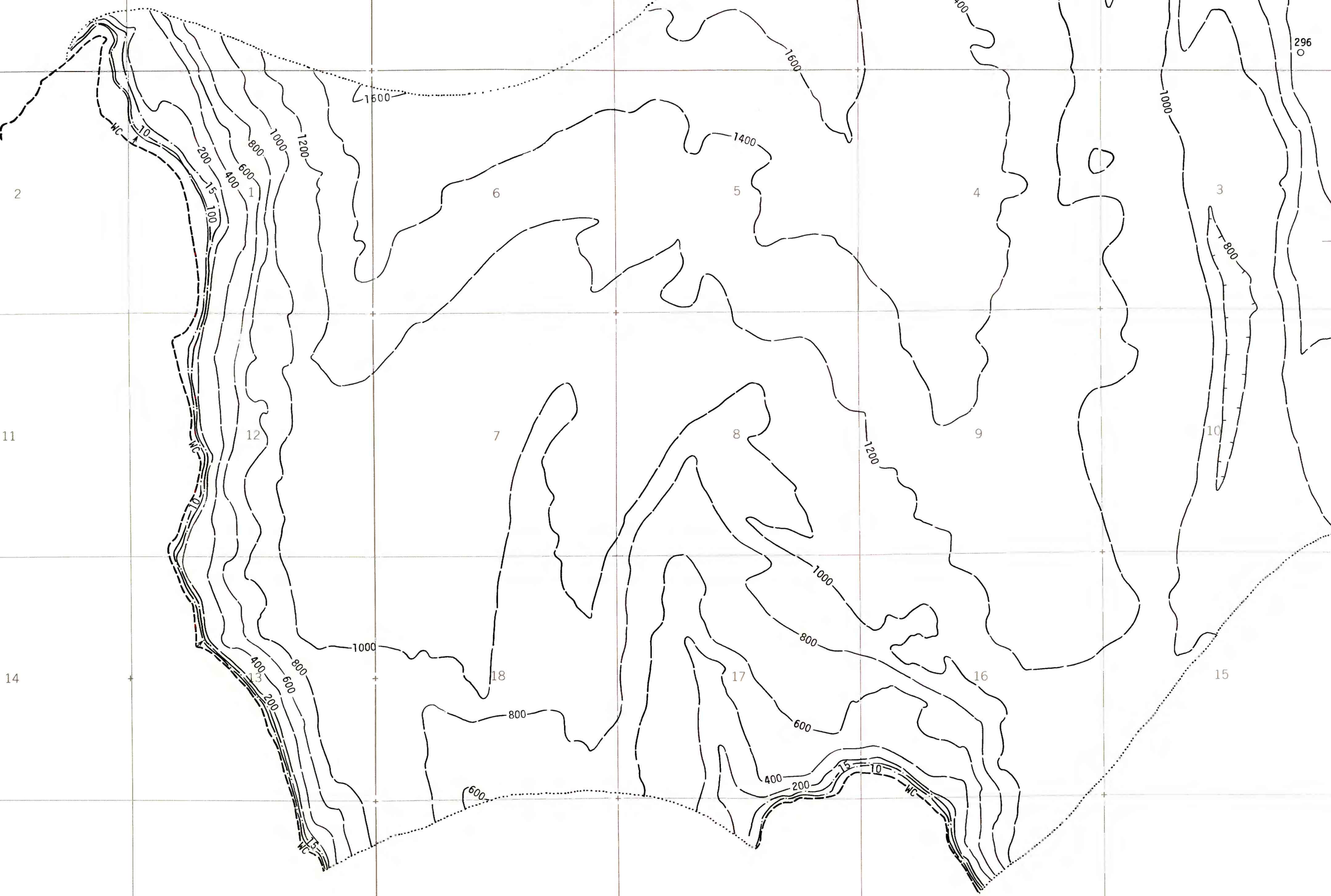
TRACE OF COAL BED OUTCROP - Showing symbol of name of coal bed as listed above. Short dashed where inferred by present authors.

TRACE OF FAULT - Bar and ball on down-thrown side when direction of movement is known. Dashed where inferred or approximately located.

To convert feet to meters, multiply feet by 0.3048.

To convert mining ratio to cubic meters of overburden per metric ton of recoverable coal, multiply mining ratio by 0.8428.

NOTE: Overburden isopachs are not drawn beyond dotted line because of insufficient data.



COAL RESOURCE OCCURRENCE MAP OF THE MOUNT HARRIS
QUADRANGLE, ROUTT COUNTY, COLORADO

BY
DAMES & MOORE
1979

PLATE 6
OVERBURDEN ISOPACH AND
MINING RATIO MAP OF THE
WOLF CREEK COAL BED