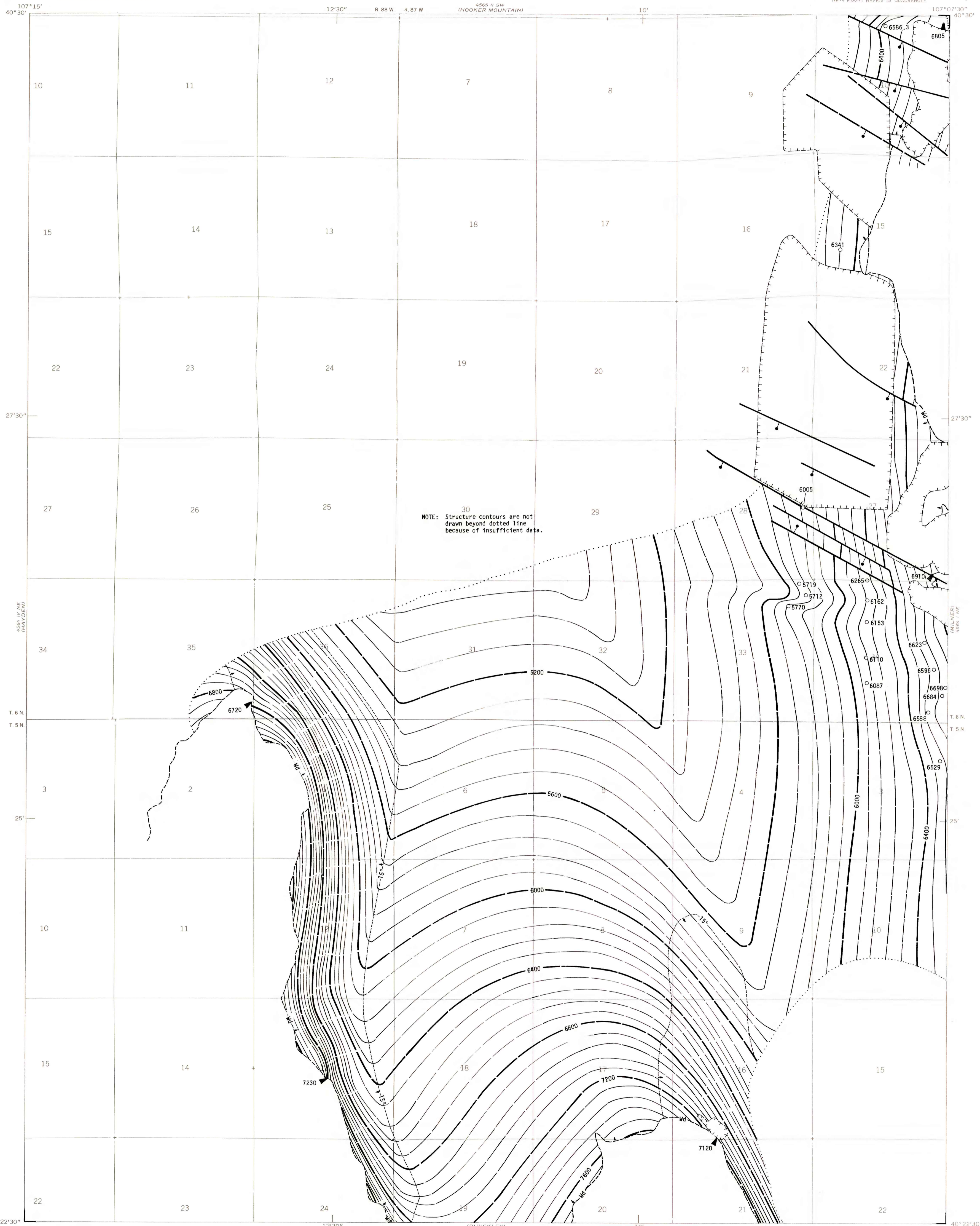


EXPLANATION

- 6400 -----
- STRUCTURE CONTOURS - Drawn on top of coal bed. Solid where vertical accuracy within 80 feet; long dashed where vertical accuracy possibly not within 80 feet; short dashed where projected above ground surface. Contour interval is 80 feet (24 m). Datum is mean sea level.
- 6110
- DRILL HOLE - Showing altitude of top of coal bed, in feet.
- ▲ 6720
- POINT OF MEASUREMENT - Showing altitude of top of coal bed, in feet.
- Wd - Wedge
- COAL BED SYMBOL AND NAME
- Wd -----
- TRACE OF COAL BED OUTCROP - Showing symbol of name of coal bed as listed above. Arrow points toward coal-bearing area. Short dashed where inferred by present authors.
- 15° -----
- SUBSURFACE MINING LIMIT - Showing areas where dips of coal beds are greater than 15° and subsurface mining by conventional methods is not considered feasible. Reserve Base tonnages are calculated beyond limit; Reserve tonnages are not. Arrow points toward area where dips are greater than 15°.
-
- TRACE OF FAULT - Bar and ball on down-thrown side when direction of movement is known. Dashed where inferred or approximately located.
-
- SURFACE OR UNDERGROUND COAL MINE - Hachures point toward mined area. Dashed where approximately located.
- To convert feet to meters, multiply feet by 0.3048.

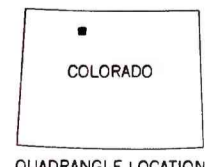
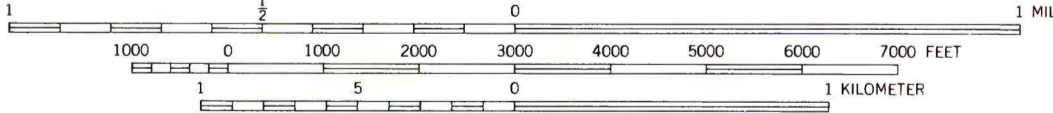
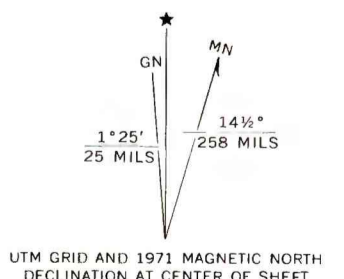


NOTE: Structure contours are not drawn beyond dotted line because of insufficient data.

Base from U.S. Geological Survey, 1971

SCALE 1:24,000

Compiled in 1977/1978



**COAL RESOURCE OCCURRENCE MAP OF THE MOUNT HARRIS
QUADRANGLE, ROUTT COUNTY, COLORADO**
BY
DAMES & MOORE
1979

This report has not been edited for conformity with U.S. Geological Survey editorial standards or stratigraphic nomenclature.