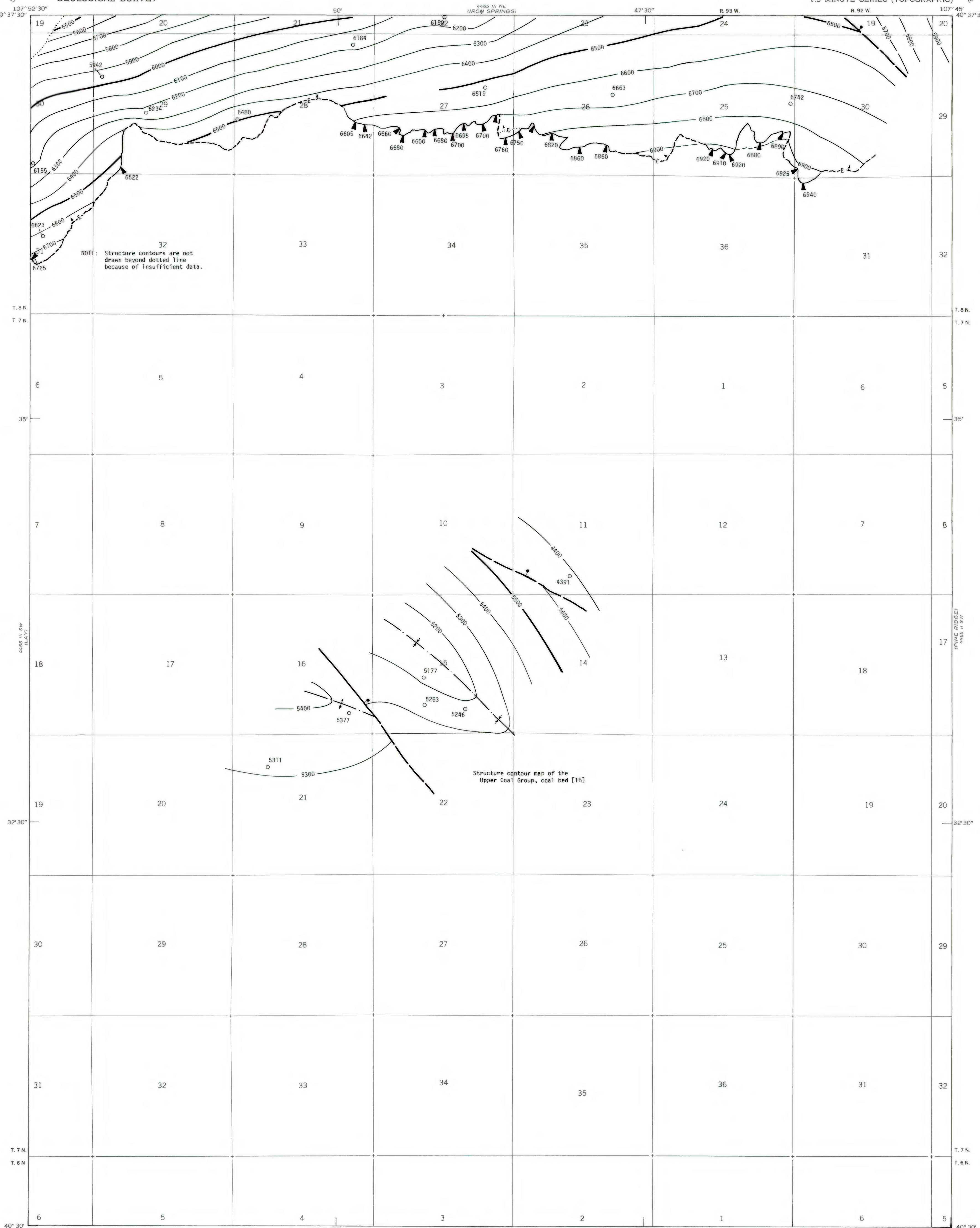


EXPLANATION

- 5500 —  
— 5400 —
- STRUCTURE CONTOURS - Drawn on top of coal bed. Solid where vertical accuracy within 40 feet; long dashed where vertical accuracy possibly not within 40 feet. Contour interval 100 feet (31 m). Datum is mean sea level.
- 5377
- DRILL HOLE - Showing altitude of top of coal bed, in feet.
- ▲ 6660
- POINT OF MEASUREMENT - Showing altitude of top of coal bed, in feet.
- E - Emerson
- COAL BED SYMBOLS AND NAMES - Coal beds identified by bracketed numbers are not formally named, but are numbered for identification purposes in this quadrangle only.
- E —
- TRACE OF COAL BED OUTCROP - Showing symbol of name of coal bed as listed above. Arrow points toward coal-bearing area. Short dashed where projected by present authors.
- | —
- TRACE OF FAULT - Bar and ball on down-thrown side. Dashed where inferred or approximately located.
- | —
- SYNCLINE - Showing trace of axial plane.
- | —
- ANTICLINE - Showing trace of axial plane.
- .....
- INFERRED LIMIT OF BURNED AND CLINKERED COAL - Arrow points toward area of baked and fused rock.

To convert feet to meters, multiply feet by 0.3048.

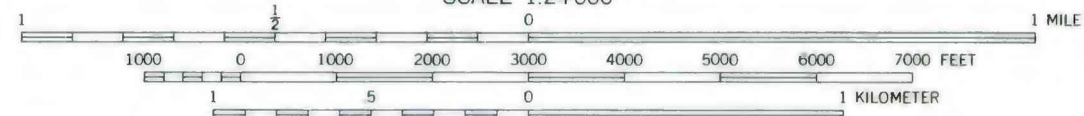
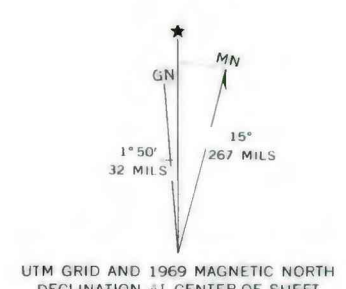


Structure contour map of the Upper Coal Group, coal bed [18]

Base from U.S. Geological Survey, 1969

Compiled in 1979

This report has not been edited for conformity with U.S. Geological Survey editorial standards or stratigraphic nomenclature.



**COAL RESOURCE OCCURRENCE MAP OF THE LAY SE QUADRANGLE, MOFFAT COUNTY, COLORADO**  
BY  
**DAMES & MOORE**  
1979